



## International Office

### Everest Biotech Ltd

Vector Laboratories, Inc.  
6737 Mowry Ave  
Newark, CA 94560  
United States

Customer Service:

[customerservice@vectorlabs.com](mailto:customerservice@vectorlabs.com)

Technical Service:

[technical@vectorlabs.com](mailto:technical@vectorlabs.com)

Tel: +1 (800) 227-6666

[www.everestbiotech.com](http://www.everestbiotech.com)

**Research Use Only. Not for  
diagnostic or therapeutic use.**

## EB06776-T - Goat Anti-Parvalbumin Antibody - Trial

Size: 20µg specific antibody in 40µl



### Target Protein

**Principal Names:** parvalbumin, HGNC:9704, PVALB, D22S749, parvalbumin alpha, MGC116759

**Official Symbol:** PVALB

**Accession Number(s):** NP\_002845.1

**Human GeneID(s):** [5816](#)

**Important Comments:** Reported variants represent identical protein: NP\_002845.1, NP\_001302461.1

### Immunogen

Peptide with sequence C-GVDEFSTLVAES, from the C Terminus of the protein sequence according to NP\_002845.1.

Please note the [peptide](#) is available for sale.

### Purification and Storage

Purified from goat serum by ammonium sulphate precipitation followed by antigen affinity chromatography using the immunizing peptide.

Supplied at 0.5 mg/ml in Tris saline, 0.02% sodium azide, pH7.3 with 0.5% bovine serum albumin.

Aliquot and store at -20°C. Minimize freezing and thawing.

### Applications Tested

**Peptide ELISA:** antibody detection limit dilution 1:64000.

**Western blot:** Approx 15kDa band observed in Human Cerebellum lysates and approx 16kDa in Rat Brain lysates (calculated MW of 12.1kDa according to Human NP\_002845.1 and 11.9kDa according to Rat NP\_071944.1). These molecular weights are observed by other sources and were successfully blocked by incubation with the immunizing peptide. Recommended concentration: 0.01-0.3µg/ml. Primary incubation 1 hour at room temperature.

**Flow Cytometry:** Flow cytometric analysis of Kelly cells. Recommended concentration: 10ug/ml.

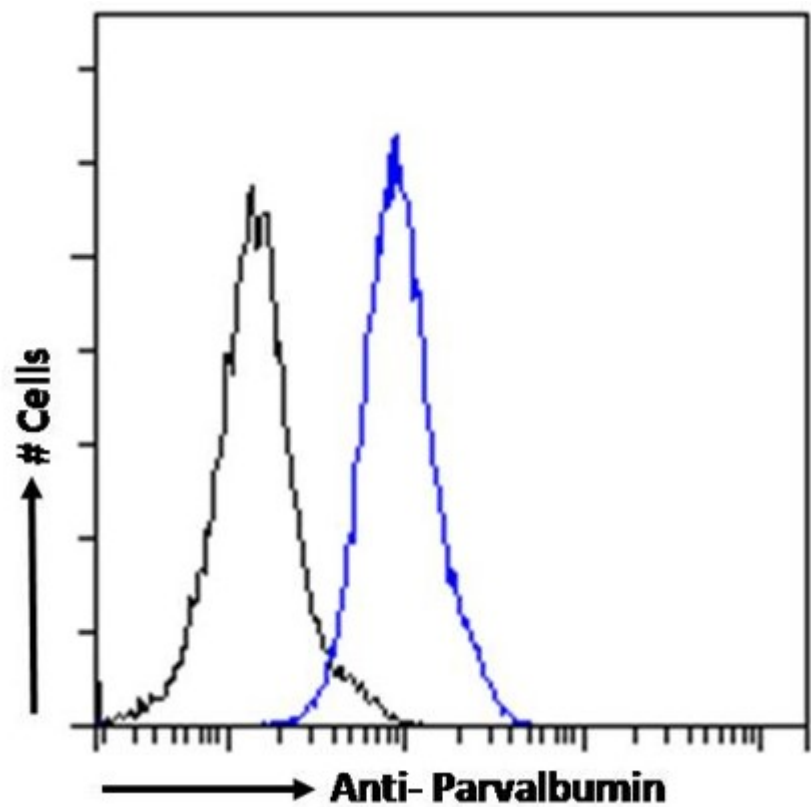
### Species Reactivity

**Tested:** Human, Rat

**Expected from sequence similarity:** Human, Rat



EB06776 (0.01 $\mu$ g/ml) staining of Human Cerebellum (A) lysate + peptide (B) and (0.3 $\mu$ g/ml) Rat Brain (C) lysate + peptide (D) (35 $\mu$ g protein in RIPA buffer). Detected by chemiluminescence.



EB06776 Flow cytometric analysis of paraformaldehyde fixed Kelly cells (blue line), permeabilized with 0.5% Triton. Primary incubation 1hr (10ug/ml) followed by Alexa Fluor 488 secondary antibody (1ug/ml). IgG control: Unimmunized goat IgG (black line) followed by Alexa Fluor 488 secondary antibody.