



## International Office

### Everest Biotech Ltd

Vector Laboratories, Inc.  
6737 Mowry Ave  
Newark, CA 94560  
United States

Customer Service:

[customerservice@vectorlabs.com](mailto:customerservice@vectorlabs.com)

Technical Service:

[technical@vectorlabs.com](mailto:technical@vectorlabs.com)

Tel: +1 (800) 227-6666

[www.everestbiotech.com](http://www.everestbiotech.com)

**Research Use Only. Not for  
diagnostic or therapeutic use.**

## EB10702 - Goat Anti-PAX1 (aa318-329) Antibody

Size: 100µg specific antibody in 200µl



### Target Protein

**Principal Names:** PAX1, paired box 1, HUP48, paired box gene 1, paired domain gene HuP48

**Official Symbol:** PAX1

**Accession Number(s):** NP\_006183.2

**Human GeneID(s):** [5075](#)

**Non-Human GeneID(s):** 18503 (mouse), 311505 (rat)

### Immunogen

Peptide with sequence C-PKMEDWAGVNRT, from the internal region of the protein sequence according to NP\_006183.2.

Please note the [peptide](#) is available for sale.

### Purification and Storage

Purified from goat serum by ammonium sulphate precipitation followed by antigen affinity chromatography using the immunizing peptide.

Supplied at 0.5 mg/ml in Tris saline, 0.02% sodium azide, pH7.3 with 0.5% bovine serum albumin.

Aliquot and store at -20°C. Minimize freezing and thawing.

### Applications Tested

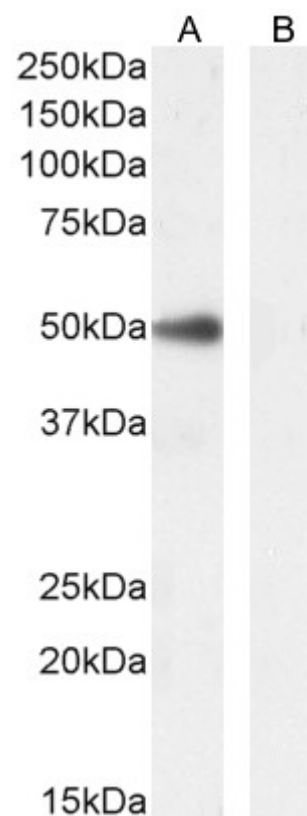
**Peptide ELISA:** antibody detection limit dilution 1:32000.

**Western blot:** Approx 50kDa band observed in Human Cerebellum lysates (calculated MW of 55.5kDa according to NP\_006183.2). This band was successfully blocked by incubation with the immunizing peptide. Recommended concentration: 0.1-0.3µg/ml. Primary incubation 1 hour at room temperature.

### Species Reactivity

**Tested:** Human

**Expected from sequence similarity:** Human, Mouse, Dog, Pig, Cow



EB10702 (0.3µg/ml) staining of Human Cerebellum lysate (A) + peptide (B). (35µg protein in RIPA buffer  
Detected by chemiluminescence.