



UK Office

Everest Biotech Ltd

Cherwell Innovation Centre
77 Heyford Park
Upper Heyford
Oxfordshire
OX25 5HD
UK

Enquiries:

info@everestbiotech.com

Sales:

sales@everestbiotech.com

Tech support:

support@everestbiotech.com

Tel: +44 (0)1869 238326

Fax: +44 (0)1869 238327

US Office

Everest Biotech c/o Abcore

405 Maple Street, Suite A106
Ramona,
CA 92065
USA

Inquiries:

info@everestbiotech.com

Sales:

usasales@everestbiotech.com

Tech support:

support@everestbiotech.com

Tel: 888-320-4628 (toll-free)

Fax: 888-841-9041

www.everestbiotech.com

**Research Use Only. Not for
diagnostic or therapeutic use.**

EB06343 - Goat Anti-PAX3 Antibody

Size: 100µg specific antibody in 200µl



Target Protein

Principal Names: PAX3, WS1, CDHS, HUP2, paired box gene 3 (Waardenburg syndrome 1), paired domain gene 3, paired box homeotic gene 3 (Waardenburg syndrome 1), paired box 3, MGC120381, MGC120382, MGC120383, MGC120384, MGC134778, paired box homeotic gene 3, paired domain gene HuP2

Official Symbol: PAX3

Accession Number(s): NP_852122.1; NP_000429.2; NP_039230.1; NP_852123.1; NP_852124.1; NP_852126.1; NP_852125.1; NP_001120838.1

Human GeneID(s): [5077](#)

Non-Human GeneID(s): 18505 (mouse), 114502 (rat)

Important Comments: This antibody is expected to recognize all 8 reported isoforms (NP_852122.1; NP_000429.2; NP_039230.1; NP_852123.1; NP_852124.1; NP_852126.1; NP_852125.1; NP_001120838.1).

Immunogen

Peptide with sequence TTLAGAVPRMM-C, from the N Terminus of the protein sequence according to NP_852122.1; NP_000429.2; NP_039230.1; NP_852123.1; NP_852124.1; NP_852126.1; NP_852125.1; NP_001120838.1.

Please note the [peptide](#) is available for sale.

Purification and Storage

Purified from goat serum by ammonium sulphate precipitation followed by antigen affinity chromatography using the immunizing peptide.

Supplied at 0.5 mg/ml in Tris saline, 0.02% sodium azide, pH7.3 with 0.5% bovine serum albumin.

Aliquot and store at -20°C. Minimize freezing and thawing.

Applications Tested

Peptide ELISA: antibody detection limit dilution 1:32000.

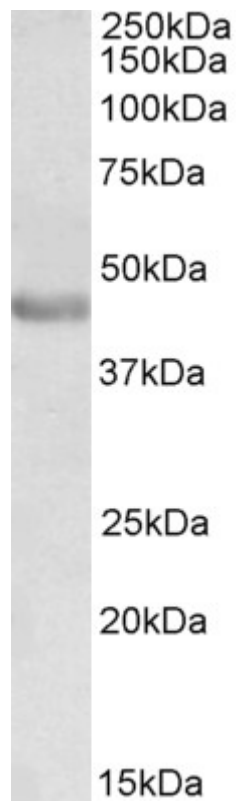
Western blot: Approx 45kDa band observed in lysates of Human Duodenum, Skin, and in lysates of cell lines A431 (calculated MW of 45.2kDa according to NP_852125.1 and of 44.8kDa according to NP_852126.1). Recommended concentration: 0.3-1µg/ml. Primary incubation was 1 hour.

IHC: In paraffin embedded Human Esophagus expression of PAX3 is detected in squamous epithelium. Recommended concentration: 4.5µg/ml.

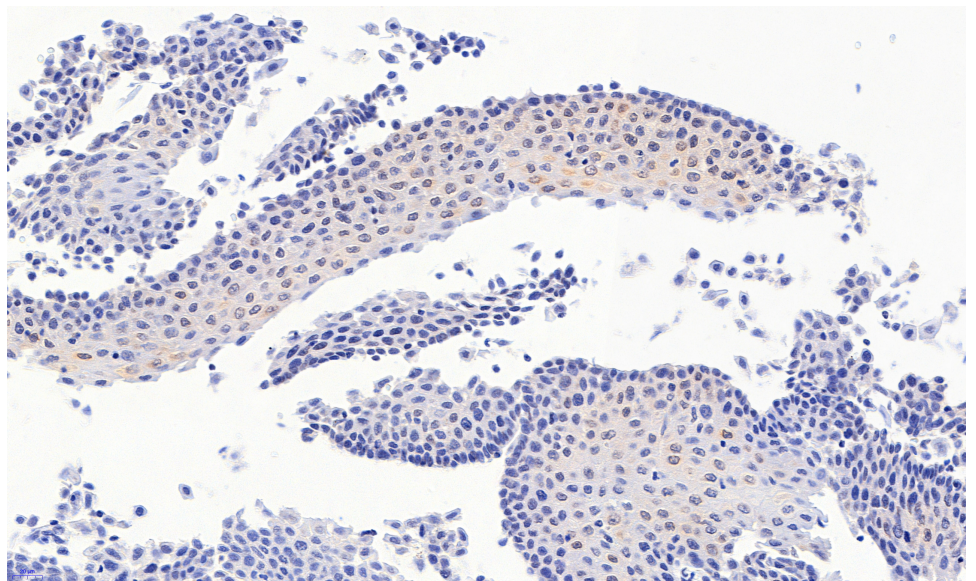
Species Reactivity

Tested: Human

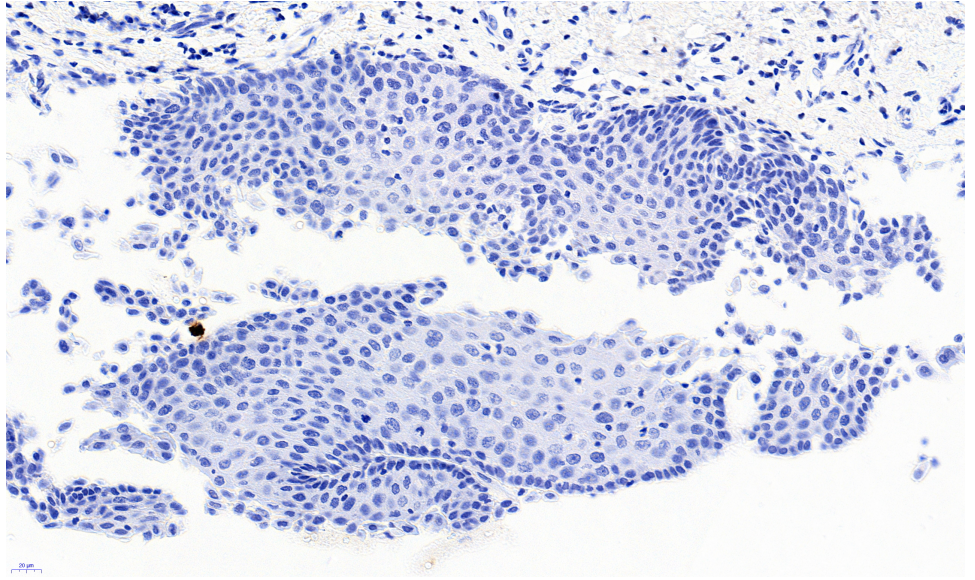
Expected from sequence similarity: Human, Rat, Cow



EB06343 (0.3µg/ml) staining of Human Duodenum lysate (35µg protein in RIPA buffer). Detected by chemiluminescence.



EB06343 (4.5µg/ml) staining of paraffin embedded Human Esophagus. Heat induced antigen retrieval with citrate buffer pH 6, HRP-staining.



EB06343 Negative Control showing staining of paraffin embedded Human Esophagus, with no primary antibody.