



## International Office

### Everest Biotech Ltd

Vector Laboratories, Inc.  
6737 Mowry Ave  
Newark, CA 94560  
United States

Customer Service:

[customerservice@vectorlabs.com](mailto:customerservice@vectorlabs.com)

Technical Service:

[technical@vectorlabs.com](mailto:technical@vectorlabs.com)

Tel: +1 (800) 227-6666

[www.everestbiotech.com](http://www.everestbiotech.com)

**Research Use Only. Not for  
diagnostic or therapeutic use.**

## EB09787 - Goat Anti-PAX4 Antibody

Size: 100µg specific antibody in 200µl



### Target Protein

**Principal Names:** KPD, MGC129960, MODY9, paired box 4, paired box gene 4, paired domain gene 4, PAX4

**Official Symbol:** PAX4

**Accession Number(s):** NP\_006184.2

**Human GeneID(s):** [5078](#)

**Non-Human GeneID(s):** 18506 (mouse), 83630 (rat)

### Immunogen

Peptide with sequence C-GKLATATSLPEDTVR, from the internal region of the protein sequence according to NP\_006184.2.

Please note the [peptide](#) is available for sale.

### Purification and Storage

Purified from goat serum by ammonium sulphate precipitation followed by antigen affinity chromatography using the immunizing peptide.

Supplied at 0.5 mg/ml in Tris saline, 0.02% sodium azide, pH7.3 with 0.5% bovine serum albumin.

Aliquot and store at -20°C. Minimize freezing and thawing.

### Applications Tested

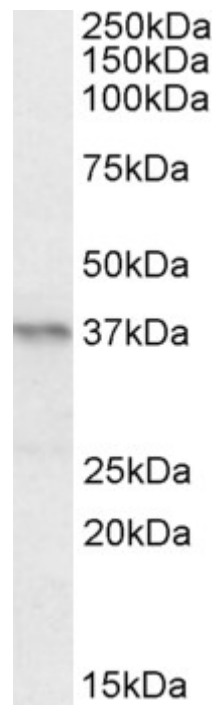
**Peptide ELISA:** antibody detection limit dilution 1:64000.

**Western blot:** Approx 37kDa band observed in Mouse Pancreas lysates and in lysates of cell lines A431, HeLa and K562 (calculated MW of 37.1kDa according to Human NP\_006184.2 and 38.0kDa according to Mouse NP\_035168.1). Recommended concentration: 0.2-0.6µg/ml.

### Species Reactivity

**Tested:** Human, Mouse

**Expected from sequence similarity:** Human, Mouse, Rat, Dog



EB09787 (0.2 $\mu$ g/ml) staining of Mouse Pancreas lysate (35 $\mu$ g protein in RIPA buffer). Primary incubation was 1 hour. Detected by chemiluminescence.