

## UK Office

### Everest Biotech Ltd

Cherwell Innovation Centre  
77 Heyford Park  
Upper Heyford  
Oxfordshire  
OX25 5HD  
UK

Enquiries:

[info@everestbiotech.com](mailto:info@everestbiotech.com)

Sales:

[sales@everestbiotech.com](mailto:sales@everestbiotech.com)

Tech support:

[support@everestbiotech.com](mailto:support@everestbiotech.com)

Tel: +44 (0)1869 238326

[www.everestbiotech.com](http://www.everestbiotech.com)

**Research Use Only. Not for  
diagnostic or therapeutic use.**

## EB05566 - Goat Anti-PAX5 / BSAP Antibody

Size: 100µg specific antibody in 200µl



### Target Protein

**Principal Names:** PAX5, BSAP, paired box gene 5 (B-cell lineage specific activator protein), B-cell lineage specific activator protein, paired box homeotic gene 5 (B-cell lineage specific activator protein), paired box 5, B cell specific activator protein, B-cell lineage specific activator, paired box homeotic gene 5, transcription factor PAX 5

**Official Symbol:** PAX5

**Accession Number(s):** NP\_057953.1

**Human GeneID(s):** [5079](#)

**Non-Human GeneID(s):** 18507 (mouse)

### Immunogen

Peptide with sequence DLEKNYPTPRTSR-C, from the N Terminus of the protein sequence according to NP\_057953.1.

Please note the [peptide](#) is available for sale.

### Purification and Storage

Purified from goat serum by ammonium sulphate precipitation followed by antigen affinity chromatography using the immunizing peptide.

Supplied at 0.5 mg/ml in Tris saline, 0.02% sodium azide, pH7.3 with 0.5% bovine serum albumin.

Aliquot and store at -20°C. Minimize freezing and thawing.

### Applications Tested

**Peptide ELISA:** antibody detection limit dilution 1:64000.

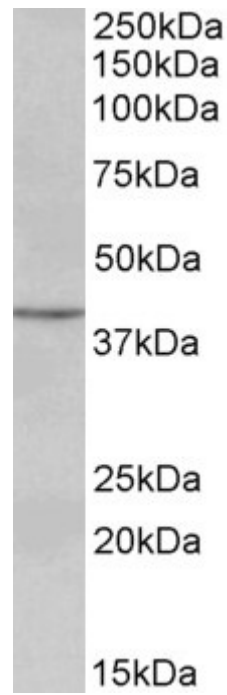
**Western blot:** Approx 38kDa band observed in Human Lymph and Rat Spleen lysates, and approx.40kDa in Mouse Spleen lysates (calculated MW of 42.1kDa according to Human NP\_057953.1 and 42.2kDa according to Mouse NP\_032808.1 and Rat NP\_001102731.1). Recommended concentration: 0.1-0.5µg/ml.

**Immunofluorescence:** Strong expression of the protein seen in the nuclei of Jurkat cells. Recommended concentration: 10µg/ml.

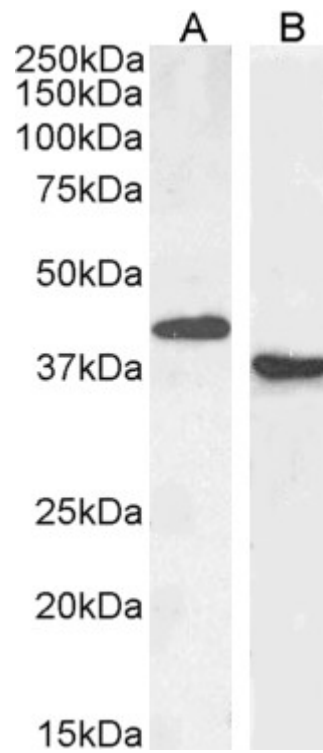
### Species Reactivity

**Tested:** Human, Mouse, Rat

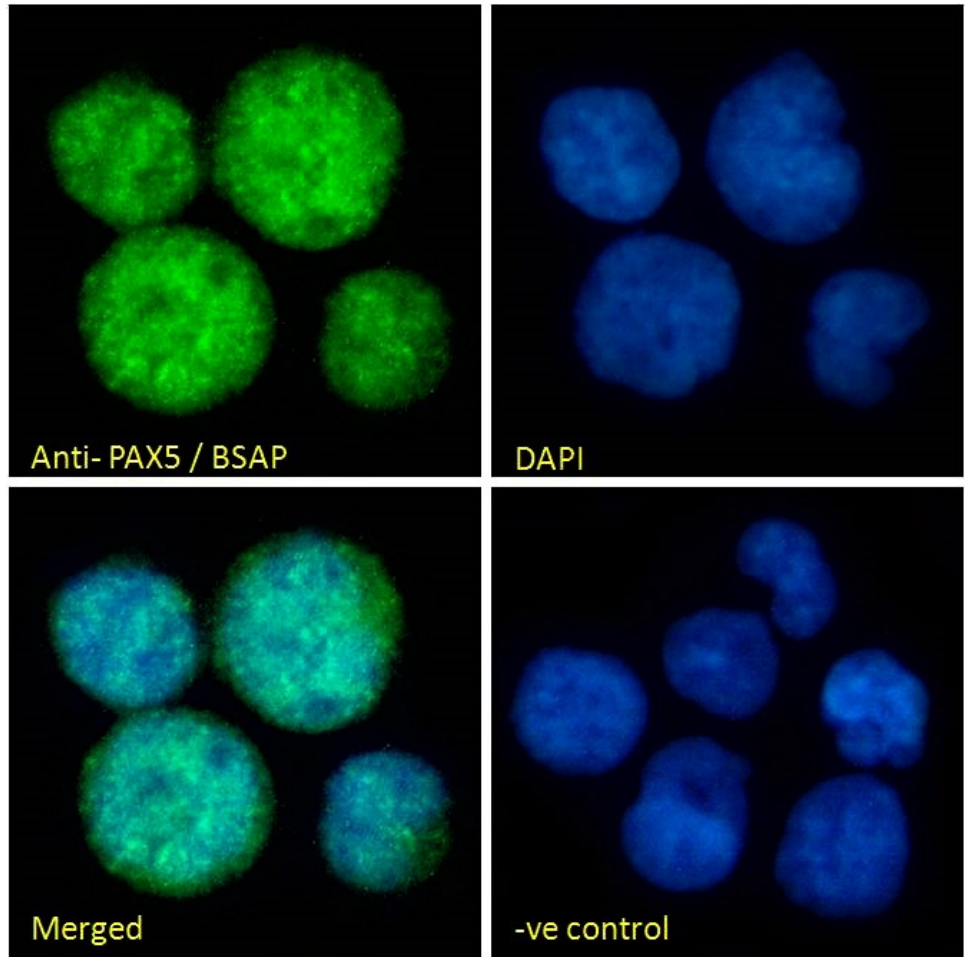
**Expected from sequence similarity:** Human, Mouse



EB05566 (0.3 $\mu$ g/ml) staining of Human Lymph lysate (35 $\mu$ g protein in RIPA buffer). Primary incubation was 1 hour. Detected by chemiluminescence.



EB05566 (1 $\mu$ g/ml) staining of Mouse (A) and (0.3 $\mu$ g/ml) Rat (B) Spleen lysate (35 $\mu$ g protein in RIPA buffer). Primary incubation was 1 hour. Detected by chemiluminescence.



EB05566 Immunofluorescence analysis of paraformaldehyde fixed Jurkat cells, permeabilized with 0.15% Triton. Primary incubation 1hr (10ug/ml) followed by Alexa Fluor 488 secondary antibody (2ug/ml), showing nuclear staining. The nuclear stain is DAPI (blue). Negative control: Unimmunized goat IgG (10ug/ml) followed by Alexa Fluor 488 secondary antibody (2ug/ml).