



UK Office

Everest Biotech Ltd

Cherwell Innovation Centre
77 Heyford Park
Upper Heyford
Oxfordshire
OX25 5HD
UK

Enquiries:

info@everestbiotech.com

Sales:

sales@everestbiotech.com

Tech support:

support@everestbiotech.com

Tel: +44 (0)1869 238326

Fax: +44 (0)1869 238327

US Office

Everest Biotech c/o Abcore

405 Maple Street, Suite A106
Ramona,
CA 92065
USA

Inquiries:

info@everestbiotech.com

Sales:

usasales@everestbiotech.com

Tech support:

support@everestbiotech.com

Tel: 888-320-4628 (toll-free)

Fax: 888-841-9041

www.everestbiotech.com

**Research Use Only. Not for
diagnostic or therapeutic use.**

EB07037 - Goat Anti-PAX8 (internal) Antibody

Size: 100µg specific antibody in 200µl



Target Protein

Principal Names: PAX8, paired box gene 8, HGNC:8622, paired domain gene 8, paired box 8

Official Symbol: PAX8

Accession Number(s): NP_003457.1; NP_039245.1; NP_039246.1; NP_039247.1; NP_054698.1

Human GeneID(s): [7849](#)

Important Comments: This antibody is expected to recognise all reported isoforms (NP_003457.1; NP_039245.1; NP_039246.1; NP_039247.1; NP_054698.1)

Immunogen

Peptide with sequence C-AQPGSDKRKMDD, from the internal region of the protein sequence according to NP_003457.1; NP_039245.1; NP_039246.1; NP_039247.1; NP_054698.1.

Please note the [peptide](#) is available for sale.

Purification and Storage

Purified from goat serum by ammonium sulphate precipitation followed by antigen affinity chromatography using the immunizing peptide.

Supplied at 0.5 mg/ml in Tris saline, 0.02% sodium azide, pH7.3 with 0.5% bovine serum albumin.

Aliquot and store at -20°C. Minimize freezing and thawing.

Applications Tested

Peptide ELISA: antibody detection limit dilution 1:32000.

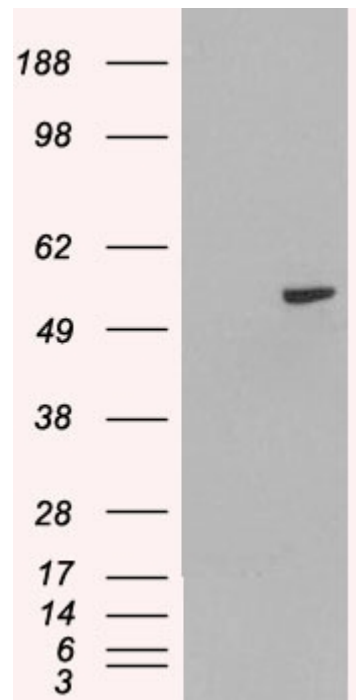
Western blot: In transfected HEK293 transiently expressing PAX8A a band of approx. 55kDa is observed. This band is not observed in the non-transfected HEK293.

Recommended concentration: 0.5-1.5µg/ml.

Species Reactivity

Tested: Human

Expected from sequence similarity: Human



HEK293 overexpressing PAX8A (RC200651) and probed with EB07037 (mock transfection in first lane), tested by Origene.