

## UK Office

### Everest Biotech Ltd

Cherwell Innovation Centre  
77 Heyford Park  
Upper Heyford  
Oxfordshire  
OX25 5HD  
UK

Enquiries:

[info@everestbiotech.com](mailto:info@everestbiotech.com)

Sales:

[sales@everestbiotech.com](mailto:sales@everestbiotech.com)

Tech support:

[support@everestbiotech.com](mailto:support@everestbiotech.com)

Tel: +44 (0)1869 238326

[www.everestbiotech.com](http://www.everestbiotech.com)

**Research Use Only. Not for  
diagnostic or therapeutic use.**

## EB05513 - Goat Anti-PAX8 (N Terminus) Antibody

Size: 100µg specific antibody in 200µl



### Target Protein

**Principal Names:** PAX8, paired box gene 8, paired domain gene 8, paired box 8

**Official Symbol:** PAX8

**Accession Number(s):** NP\_003457.1; NP\_039245.1; NP\_039246.1; NP\_039247.1;  
NP\_054698.1

**Human GeneID(s):** [7849](#)

**Non-Human GeneID(s):** 18510 (mouse), 81819 (rat)

**Important Comments:** This antibody is expected to recognise all five human isoforms (as represented by NP\_003457.1; NP\_039245.1; NP\_039246.1; NP\_039247.1; NP\_054698.1)

### Immunogen

Peptide with sequence PHNSIRSGHGGLN-C, from the N Terminus of the protein sequence according to NP\_003457.1; NP\_039245.1; NP\_039246.1; NP\_039247.1; NP\_054698.1.

Please note the [peptide](#) is available for sale.

### Purification and Storage

Purified from goat serum by ammonium sulphate precipitation followed by antigen affinity chromatography using the immunizing peptide.

Supplied at 0.5 mg/ml in Tris saline, 0.02% sodium azide, pH7.3 with 0.5% bovine serum albumin.

Aliquot and store at -20°C. Minimize freezing and thawing.

### Applications Tested

**Peptide ELISA:** antibody detection limit dilution 1:64000.

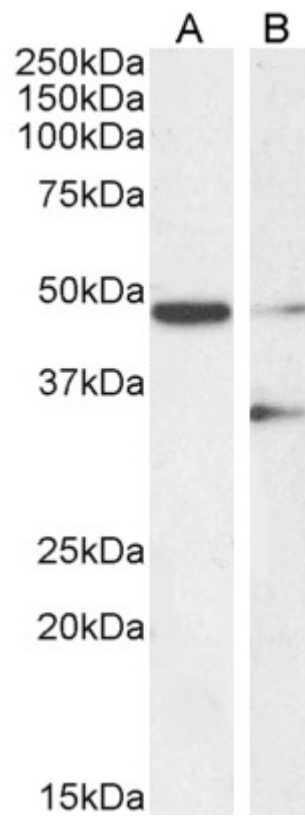
**Western blot:** Approx 48kDa band observed in Human Liver lysates. An additional 35kDa band was also observed in some Liver and HEK293 cell lysates (calculated MW of 34.9kDa according to Human NP\_039247.1 PAX8D and 48.2kDa according to Human NP\_003457.1 PAXA). Recommended concentration: 0.3-1µg/ml. Primary incubation 1 hour at room temperature.

**IHC:** Paraffin embedded Human Kidney. Recommended concentration: 4-5µg/ml.

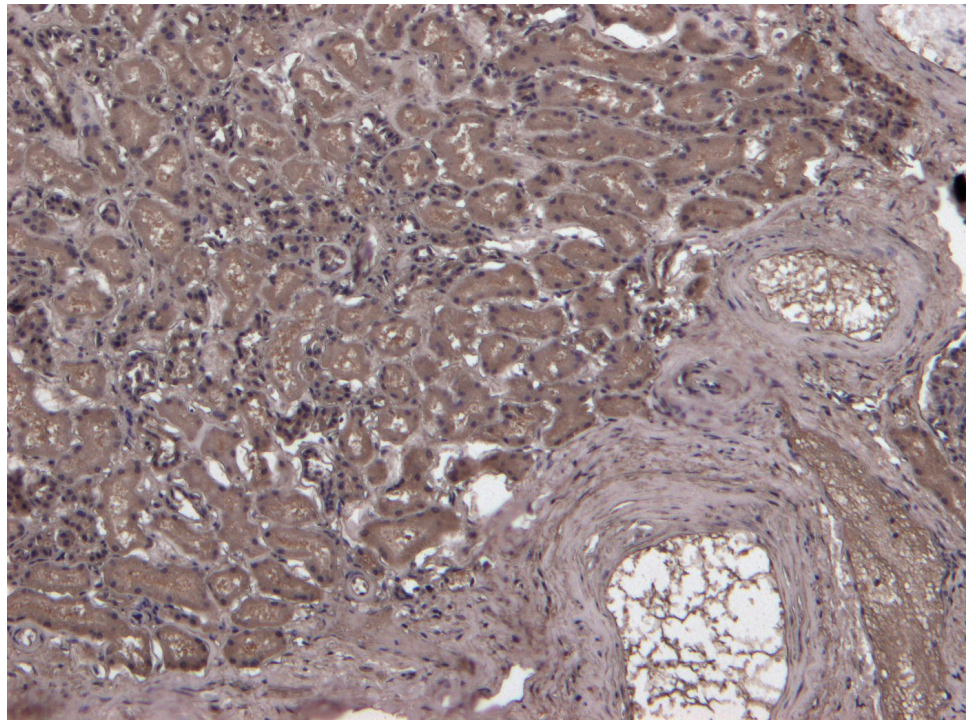
### Species Reactivity

**Tested:** Human

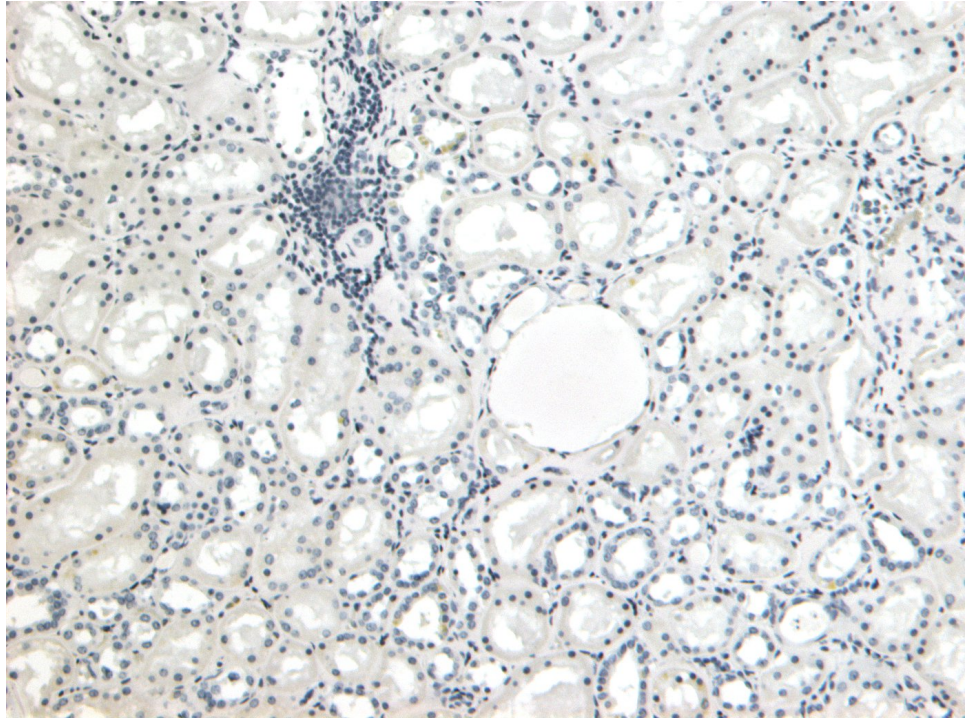
**Expected from sequence similarity:** Human, Mouse, Rat



EB05513 (1 $\mu$ g/ml) staining of Human Liver (A) and HEK293 cell (B) lysate (35 $\mu$ g protein in RIPA buffer). Detected by chemiluminescence.



EB05513 (4 $\mu$ g/ml) staining of paraffin embedded Human Kidney. Heat induced antigen retrieval with citrate buffer pH 6, HRP-staining.



EB05513 Negative Control showing staining of paraffin embedded Human Kidney, with no primary antibody.