



## International Office

### Everest Biotech Ltd

Vector Laboratories, Inc.  
6737 Mowry Ave  
Newark, CA 94560  
United States

Customer Service:

[customerservice@vectorlabs.com](mailto:customerservice@vectorlabs.com)

Technical Service:

[technical@vectorlabs.com](mailto:technical@vectorlabs.com)

Tel: +1 (800) 227-6666

[www.everestbiotech.com](http://www.everestbiotech.com)

**Research Use Only. Not for  
diagnostic or therapeutic use.**

## EB09203 - Goat Anti-PBR (mouse) Antibody

Size: 100µg specific antibody in 200µl



### Target Protein

**Principal Names:** PBR, Tspo, translocator protein, Bzrp, IBP, benzodiazepine receptor, peripheral, isoquinoline-binding protein, peripheral benzodiazepine receptor

**Official Symbol:** Tspo

**Accession Number(s):** NP\_033905.3

**Non-Human GeneID(s):** 12257 (mouse), 24230 (rat)

### Immunogen

Peptide with sequence C-RDNSGRRGGSRLPE, from the C Terminus of the protein sequence according to NP\_033905.3.

Please note the [peptide](#) is available for sale.

### Purification and Storage

Purified from goat serum by ammonium sulphate precipitation followed by antigen affinity chromatography using the immunizing peptide.

Supplied at 0.5 mg/ml in Tris saline, 0.02% sodium azide, pH7.3 with 0.5% bovine serum albumin.

Aliquot and store at -20°C. Minimize freezing and thawing.

### Applications Tested

**Peptide ELISA:** antibody detection limit dilution 1:128000.

**Western blot:** Approx. 16-17kDa band observed in Mouse Kidney lysates and in lysates of cell line NIH3T3 (calculated MW of 18.8kDa according to NP\_033905.3). Recommended concentration: 0.01-0.03µg/ml. Primary incubation 1 hour at room temperature.

**IHC:** Paraffin embedded Mouse Kidney and Colon. Recommended concentration: 5-10µg/ml.

**Flow Cytometry:** Flow cytometric analysis of NIH3T3 cells. Recommended concentration: 10ug/ml.

### Species Reactivity

**Tested:** Mouse

**Expected from sequence similarity:** Mouse, Rat, Human

### Specific Reference

**This antibody (previous batch) has been successfully used in Western blot on**

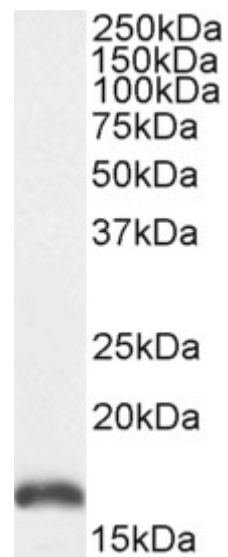
#### **Mouse:**

Morgan JA, Cheepala SB, Wang Y, Neale G, Adachi M, Nachagari D, Leggas M, Zhao W, Boyd K, Venkataramanan R, Schuetz JD.

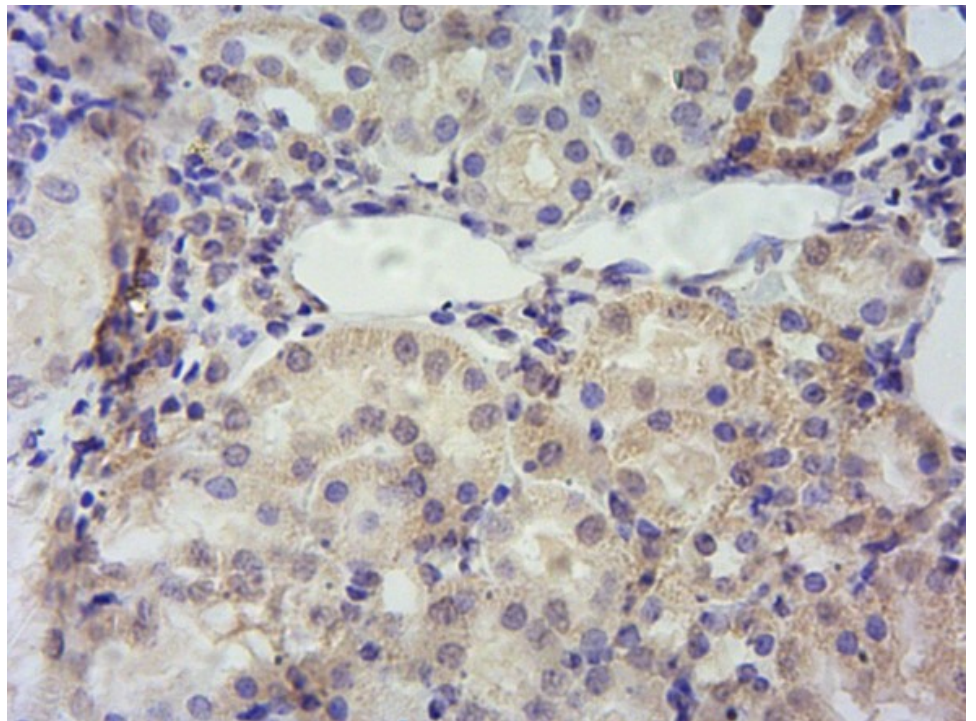
Deregulated hepatic metabolism exacerbates impaired testosterone production in Mrp4-deficient mice.

J Biol Chem. 2012 Apr 27;287(18):14456-66.

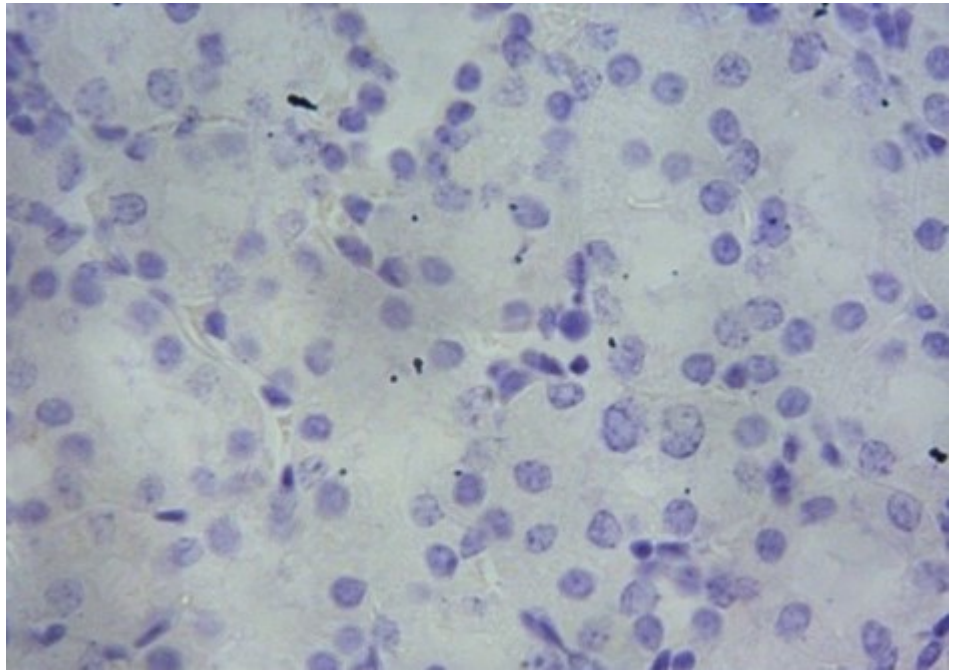
PMID: 22375007



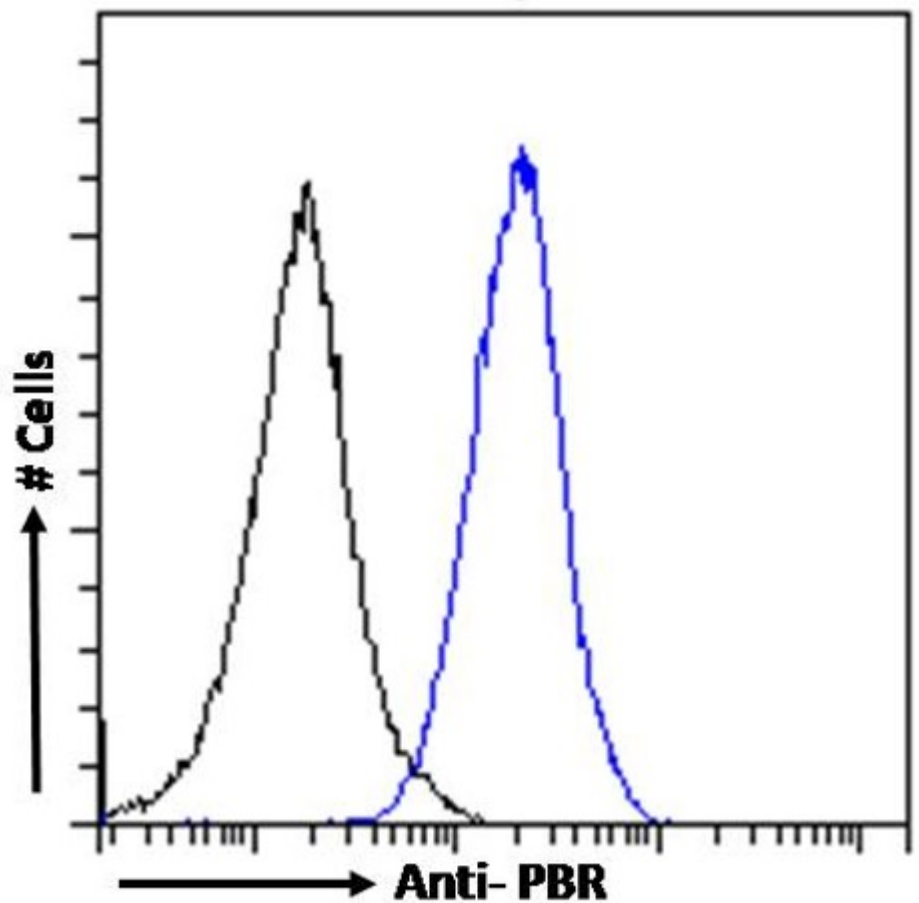
EB09203 (0.01 $\mu$ g/ml) staining of Mouse Kidney lysate (35 $\mu$ g protein in RIPA buffer). Detected by chemiluminescence



EB09203 (10 $\mu$ g/ml): Staining of paraffin embedded Mouse Kidney. Heat induced antigen retrieval with citrate buffer pH 6, HRP-Staining.



EB09203 Negative Control showing staining of paraffin embedded Mouse Colon, with no primary antibody.



EB09203 Flow cytometric analysis of paraformaldehyde fixed NIH3T3 cells (blue line), permeabilized with 0.5% Triton. Primary incubation 1hr (10ug/ml) followed by Alexa Fluor 488 secondary antibody (1ug/ml). IgG control: Unimmunized goat IgG (black line) followed by Alexa Fluor 488 secondary antibody.