



## International Office

### Everest Biotech Ltd

Vector Laboratories, Inc.  
6737 Mowry Ave  
Newark, CA 94560  
United States

Customer Service:

[customerservice@vectorlabs.com](mailto:customerservice@vectorlabs.com)

Technical Service:

[technical@vectorlabs.com](mailto:technical@vectorlabs.com)

Tel: +1 (800) 227-6666

[www.everestbiotech.com](http://www.everestbiotech.com)

**Research Use Only. Not for  
diagnostic or therapeutic use.**

## EB11246 - Goat Anti-PCDH17 (aa1098-111) Antibody

Size: 100µg specific antibody in 200µl



### Target Protein

**Principal Names:** PCDH68, PCH68, protocadherin 17, protocadherin 68, protocadherin-17, protocadherin-68, PCDH17

**Official Symbol:** PCDH17

**Accession Number(s):** NP\_001035519.1

**Human GeneID(s):** [27253](#)

**Non-Human GeneID(s):** 219228 (mouse), 306055 (rat)

### Immunogen

Peptide with sequence C-RVFADVHSRASRDS, from the internal region (near C Terminus) of the protein sequence according to NP\_001035519.1.

Please note the [peptide](#) is available for sale.

### Purification and Storage

Purified from goat serum by ammonium sulphate precipitation followed by antigen affinity chromatography using the immunizing peptide.

Supplied at 0.5 mg/ml in Tris saline, 0.02% sodium azide, pH7.3 with 0.5% bovine serum albumin.

Aliquot and store at -20°C. Minimize freezing and thawing.

### Applications Tested

**Peptide ELISA:** antibody detection limit dilution 1:8000.

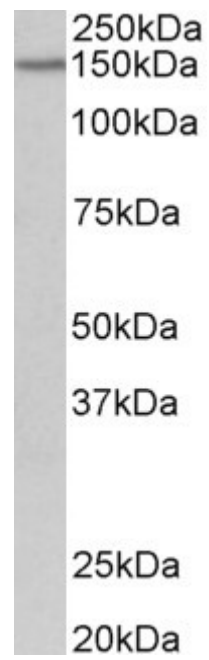
**Western blot:** Approx 150kDa band observed in Mouse fetal Brain lysates (calculated MW of 126kDa according to Human NP\_001035519.1 and Mouse NP\_001013775.2).

Recommended concentration: 0.1-0.3µg/ml.

### Species Reactivity

**Tested:** Mouse

**Expected from sequence similarity:** Human, Mouse, Rat, Pig, Cow



EB11246 (0.2µg/ml) staining of Mouse fetal Brain lysate (35µg protein in RIPA buffer). Primary incubation was 1 hour. Detected by chemiluminescence.