



UK Office

Everest Biotech Ltd

Cherwell Innovation Centre
77 Heyford Park
Upper Heyford
Oxfordshire
OX25 5HD
UK

Enquiries:

info@everestbiotech.com

Sales:

sales@everestbiotech.com

Tech support:

support@everestbiotech.com

Tel: +44 (0)1869 238326

Fax: +44 (0)1869 238327

US Office

Everest Biotech c/o Abcore

405 Maple Street, Suite A106
Ramona,
CA 92065
USA

Inquiries:

info@everestbiotech.com

Sales:

usasales@everestbiotech.com

Tech support:

support@everestbiotech.com

Tel: 888-320-4628 (toll-free)

Fax: 888-841-9041

www.everestbiotech.com

**Research Use Only. Not for
diagnostic or therapeutic use.**

EB06943 - Goat Anti-PCK1 / PEPCKC (internal) Antibody

Size: 100µg specific antibody in 200µl



Target Protein

Principal Names: PCK1, phosphoenolpyruvate carboxykinase 1 (soluble), HGNC:8724, MGC22652, PEPCK1, PEPCKC, PEP carboxykinase, cytosolic phosphoenolpyruvate carboxykinase 1, phosphoenolpyruvate carboxylase, phosphopyruvate carboxylase, PEPCK-C

Official Symbol: PCK1

Accession Number(s): NP_002582.3

Human GeneID(s): [5105](#)

Immunogen

Peptide with sequence C-HVNWFRKDKEGK, from the internal region of the protein sequence according to NP_002582.3.

Please note the [peptide](#) is available for sale.

Purification and Storage

Purified from goat serum by ammonium sulphate precipitation followed by antigen affinity chromatography using the immunizing peptide.

Supplied at 0.5 mg/ml in Tris saline, 0.02% sodium azide, pH7.3 with 0.5% bovine serum albumin.

Aliquot and store at -20°C. Minimize freezing and thawing.

Applications Tested

Peptide ELISA: antibody detection limit dilution 1:8000.

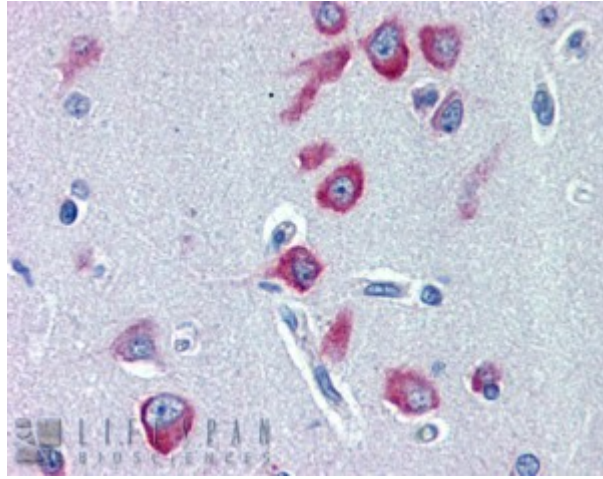
Western blot: Preliminary experiments gave bands at approx 70kDa, 45kDa and 28kDa in Human Adipose, Kidney and Liver lysates after 0.3 µg/ml antibody staining. Please note that currently we cannot find an explanation in the literature for the additional bands we observe given the calculated size of 69.2 kDa according to NP_002582.2. All three detected bands were successfully blocked by incubation with the immunizing peptide (and BLAST results with the immunizing peptide sequence did not identify any other proteins to explain the additional bands).

IHC: Paraffin embedded Human Cerebral Cortex, Kidney and Liver. Recommended concentration: 2µg/ml.

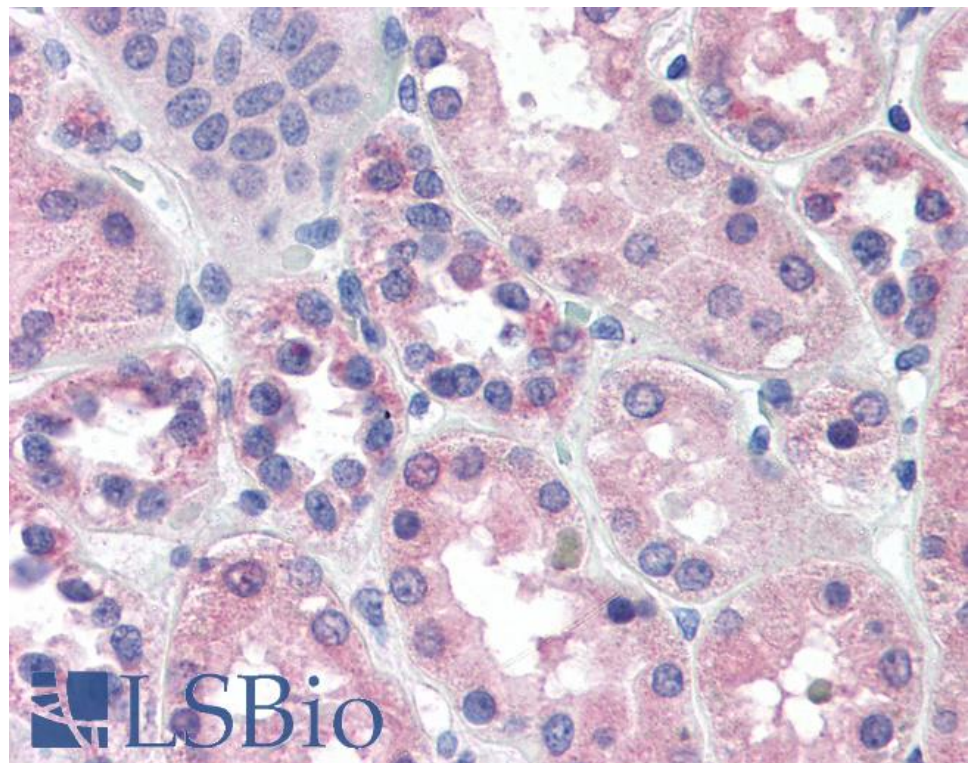
Species Reactivity

Tested: Human

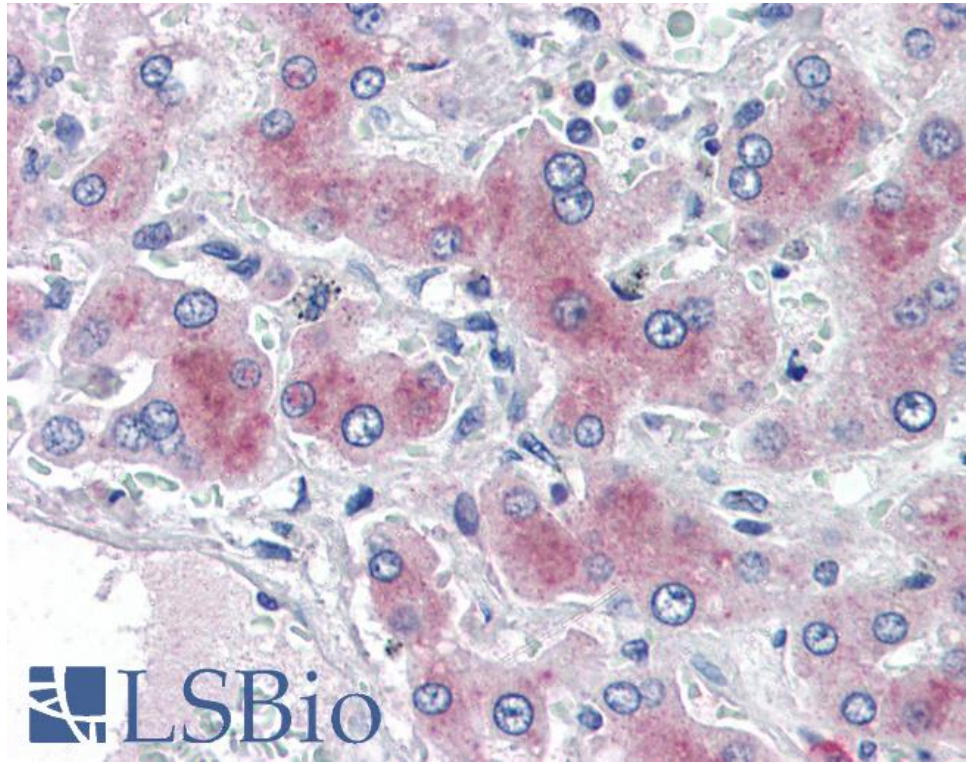
Expected from sequence similarity: Human, Mouse, Rat, Dog, Pig, Cow



EB06943 (2µg/ml) staining of paraffin embedded Human Cerebral Cortex. Steamed antigen retrieval with citrate buffer pH 6, AP-staining.



EB06943 (2µg/ml) staining of paraffin embedded Human Kidney. Steamed antigen retrieval with citrate buffer pH 6, AP-staining.



EB06943 (2µg/ml) staining of paraffin embedded Human Liver. Steamed antigen retrieval with citrate buffer pH 6, AP-staining.