



International Office

Everest Biotech Ltd

Vector Laboratories, Inc.
6737 Mowry Ave
Newark, CA 94560
United States

Customer Service:

customerservice@vectorlabs.com

Technical Service:

technical@vectorlabs.com

Tel: +1 (800) 227-6666

www.everestbiotech.com

**Research Use Only. Not for
diagnostic or therapeutic use.**

EB07755 - Goat Anti-PCK1 / PEPCKC (internal region) Antibody

Size: 100µg specific antibody in 200µl



Target Protein

Principal Names: PCK1, PEPCKC, phosphoenolpyruvate carboxykinase 1 (soluble), MGC22652, PEPCK1, PEP carboxykinase, cytosolic phosphoenolpyruvate carboxykinase 1, phosphoenolpyruvate carboxylase, phosphopyruvate carboxylase

Official Symbol: PCK1

Accession Number(s): NP_002582.2

Human GeneID(s): [5105](#)

Immunogen

Peptide with sequence C-EKEVEDIEKYLEDQ, from the internal region (near the C Terminus) of the protein sequence according to NP_002582.2.

Please note the [peptide](#) is available for sale.

Purification and Storage

Purified from goat serum by ammonium sulphate precipitation followed by antigen affinity chromatography using the immunizing peptide.

Supplied at 0.5 mg/ml in Tris saline, 0.02% sodium azide, pH7.3 with 0.5% bovine serum albumin.

Aliquot and store at -20°C. Minimize freezing and thawing.

Applications Tested

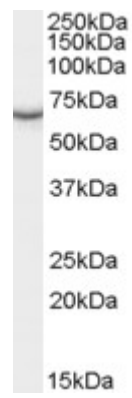
Peptide ELISA: antibody detection limit dilution 1:16000.

Western blot: Approx 70kDa band observed in Human Kidney lysates (calculated MW of 69.2kDa according to NP_002582.2). Recommended concentration: 0.5-1.5µg/ml.

Species Reactivity

Tested: Human

Expected from sequence similarity: Human



EB07755 (0.5 μ g/ml) staining of Human Kidney lysate (35 μ g protein in RIPA buffer). Primary incubation was 1 hour. Detected by chemiluminescence.