



International Office

Everest Biotech Ltd

Vector Laboratories, Inc.
6737 Mowry Ave
Newark, CA 94560
United States

Customer Service:

customerservice@vectorlabs.com

Technical Service:

technical@vectorlabs.com

Tel: +1 (800) 227-6666

www.everestbiotech.com

**Research Use Only. Not for
diagnostic or therapeutic use.**

EB11650 - Goat Anti-PCNA Antibody

Size: 100µg specific antibody in 200µl



Target Protein

Principal Names: cyclin, DNA polymerase delta auxiliary protein, MGC8367, OTTHUMP00000030190, PCNA, proliferating cell nuclear antigen, ATLD2

Official Symbol: PCNA

Accession Number(s): NP_002583.1

Human GeneID(s): [5111](#)

Non-Human GeneID(s): 18538 (mouse), 25737 (rat)

Important Comments: Reported variants represent identical protein: NP_872590.1, NP_002583.1

Immunogen

Peptide with sequence C-NGNIKLSQTSNVD, from the internal region of the protein sequence according to NP_002583.1.

Please note the [peptide](#) is available for sale.

Purification and Storage

Purified from goat serum by ammonium sulphate precipitation followed by antigen affinity chromatography using the immunizing peptide.

Supplied at 0.5 mg/ml in Tris saline, 0.02% sodium azide, pH7.3 with 0.5% bovine serum albumin.

Aliquot and store at -20°C. Minimize freezing and thawing.

Applications Tested

Peptide ELISA: antibody detection limit dilution 1:128000.

Western blot: Approx 30kDa band observed in lysates of cell line HeLa (calculated MW of 28.8kDa according to Human NP_002583.1). Approx.33kDa band observed in lysates of cell line NIH3T3 and in Mouse and Rat Testis and Pig Spleen lysates (calculated MW of 28.8kDa according to Mouse NP_035175.1, Rat NP_071776.1 and Pig NP_001278854.1). Primary incubation was 1 hour. The observed molecular weight corresponds to earlier findings in literature with different antibodies (Gilljam et al, , J Cell Biol. 2009 Sep 7;186(5):645-54.). Recommended concentration: 0.01-0.03µg/ml.

IHC: Paraffin embedded Human Testis. Recommended concentration: 5-6µg/ml.

Additional validation: This antibody has been successfully used in the following paper: Sikorski et al. (2018) PMID: 30377371.

Species Reactivity

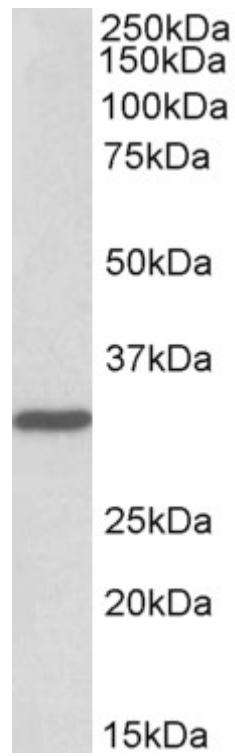
Tested: Human, Mouse, Rat, Pig

Expected from sequence similarity: Human, Mouse, Rat, Dog, Pig, Cow

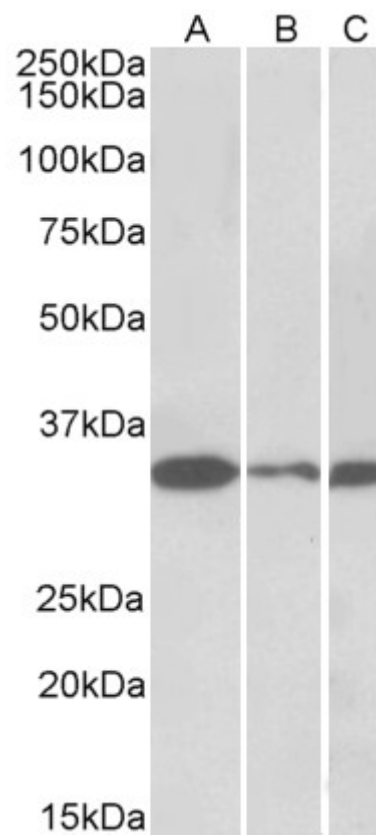
Specific Reference

This antibody has been successfully used in the following paper:

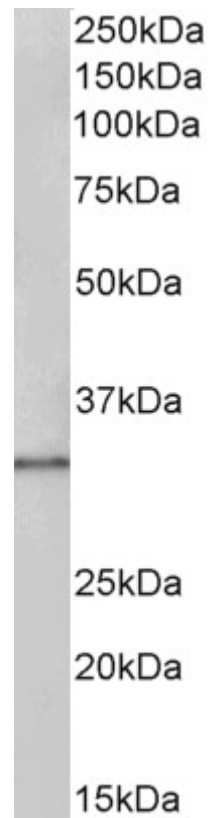
Krzysztof Sikorski, Adi Mehta, Marit Inngjerdengen, Flourina Thakor, Simon Kling, Tomas Kalina, Tuula A. Nyman, Maria Ekman Stensland, Wei Zhou, Gustavo A. De Souza, Lars Holden, Jan Stuchly, Markus Templin and Fridtjof Lund-Johansen
A high-throughput pipeline for validation of antibodies
Nat Methods. 2018 Nov;15(11):909-912
PMID: 30377371



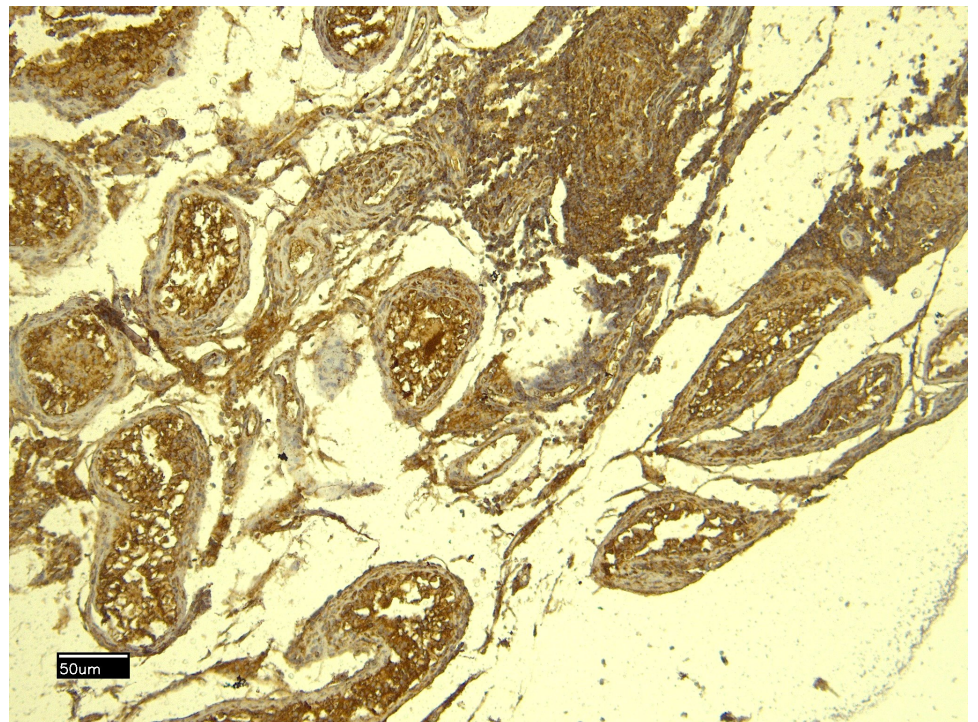
EB11650 (0.01 μ g/ml) staining of HeLa lysate (35 μ g protein in RIPA buffer). Detected by chemiluminescence.



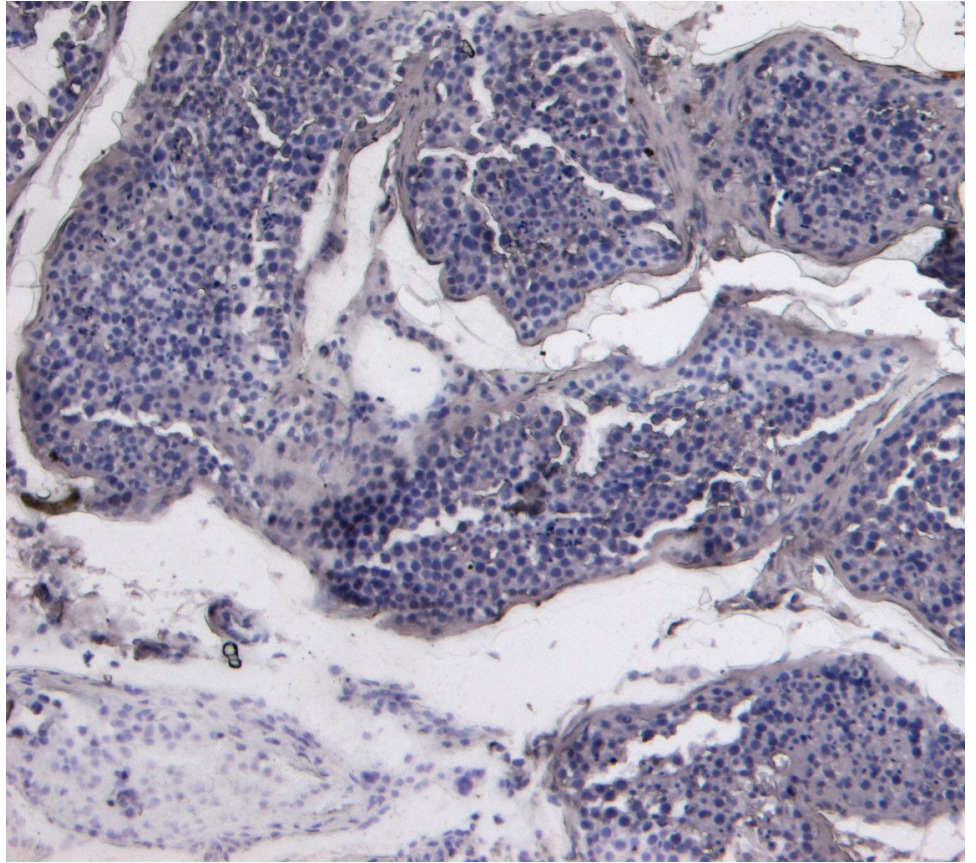
EB11650 (0.01 μ g/ml) staining of NIH3T3 (A), Mouse Testis (B) and Rat Testis (C) lysates (35 μ g protein in RIPA buffer). Detected by chemiluminescence.



EB11650 (0.03 μ g/ml) staining of Pig Spleen lysate (35 μ g protein in RIPA buffer). Detected by chemiluminescence.



EB11650 (6 μ g/ml) staining of paraffin embedded Human Testis. Heat induced antigen retrieval with citrate buffer pH 6, HRP-staining.



EB11650 Negative Control showing staining of paraffin embedded Human Testis, with no primary antibody.