



EB11650 - Goat Anti-PCNA Antibody

Size: 100µg specific antibody in 200µl



UK Office

Everest Biotech Ltd

Cherwell Innovation Centre
77 Heyford Park
Upper Heyford
Oxfordshire
OX25 5HD
UK

Enquiries:

info@everestbiotech.com

Sales:

sales@everestbiotech.com

Tech support:

support@everestbiotech.com

Tel: +44 (0)1869 238326

Fax: +44 (0)1869 238327

US Office

Everest Biotech c/o Abcore

405 Maple Street, Suite A106
Ramona,
CA 92065
USA

Inquiries:

info@everestbiotech.com

Sales:

usasales@everestbiotech.com

Tech support:

support@everestbiotech.com

Tel: 888-320-4628 (toll-free)

Fax: 888-841-9041

www.everestbiotech.com

Research Use Only. Not for diagnostic or therapeutic use.

Target Protein

Principal Names: cyclin, DNA polymerase delta auxiliary protein, MGC8367, OTTHUMP00000030190, PCNA, proliferating cell nuclear antigen, ATLD2

Official Symbol: PCNA

Accession Number(s): NP_002583.1

Human GeneID(s): [5111](#)

Non-Human GeneID(s): 18538 (mouse), 25737 (rat)

Important Comments: Reported variants represent identical protein: NP_872590.1, NP_002583.1

Immunogen

Peptide with sequence C-NGNIKLSQTSNVD, from the internal region of the protein sequence according to NP_002583.1.

Please note the [peptide](#) is available for sale.

Purification and Storage

Purified from goat serum by ammonium sulphate precipitation followed by antigen affinity chromatography using the immunizing peptide.

Supplied at 0.5 mg/ml in Tris saline, 0.02% sodium azide, pH7.3 with 0.5% bovine serum albumin.

Aliquot and store at -20°C. Minimize freezing and thawing.

Applications Tested

Peptide ELISA: antibody detection limit dilution 1:128000.

Western blot: Approx 30kDa band observed in lysates of cell line HeLa (calculated MW of 28.8kDa according to Human NP_002583.1). Approx.33kDa band observed in lysates of cell line NIH3T3 and in Mouse and Rat Testis and Pig Spleen lysates (calculated MW of 28.8kDa according to Mouse NP_035175.1, Rat NP_071776.1 and Pig NP_001278854.1). The observed molecular weight corresponds to earlier findings in literature with different antibodies (Gilljam et al, , J Cell Biol. 2009 Sep 7;186(5):645-54.). Recommended concentration: 0.01-0.03µg/ml.

Enzyme immunoassay:This antibody was reported to work in sandwich-type ELISA both as a capturer and as a reporter in combination with EB11651.

Additional validation: This antibody has been successfully used in the following paper: Sikorski et al. (2018) PMID: 30377371.

Species Reactivity

Tested: Human, Mouse, Rat, Pig

Expected from sequence similarity: Human, Mouse, Rat, Dog, Pig, Cow

Specific Reference

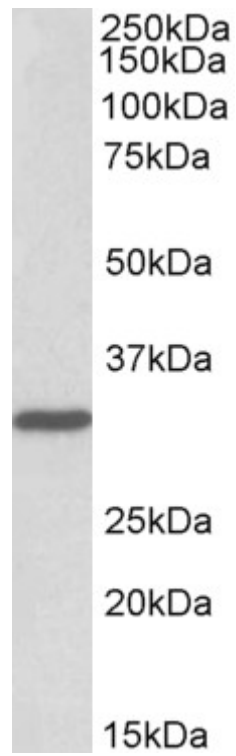
This antibody has been successfully used in the following paper:

Krzysztof Sikorski, Adi Mehta, Marit Inngjerdingen, Flourina Thakor, Simon Kling, Tomas Kalina, Tuula A. Nyman, Maria Ekman Stensland, Wei Zhou, Gustavo A. De Souza, Lars Holden, Jan Stuchly, Markus Templin and Fridtjof Lund-Johansen

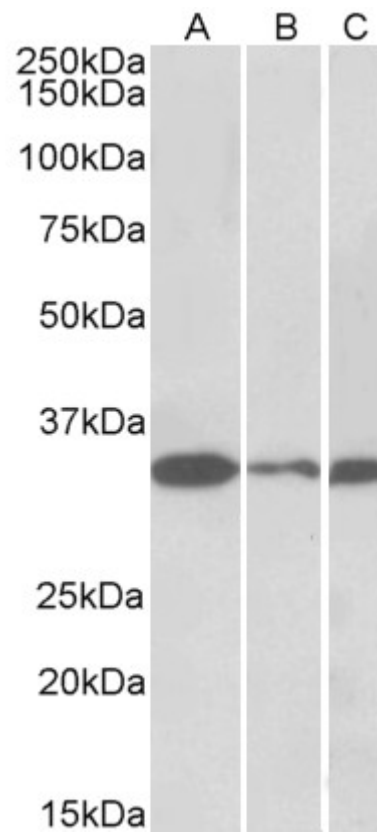
A high-throughput pipeline for validation of antibodies

Nat Methods. 2018 Nov;15(11):909-912

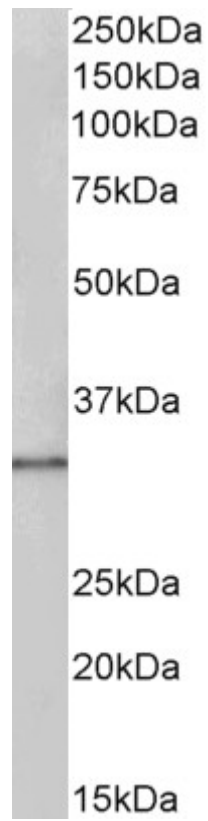
PMID: 30377371



EB11650 (0.01 μ g/ml) staining of HeLa lysate (35 μ g protein in RIPA buffer). Primary incubation was 1 hour. Detected by chemiluminescence.



EB11650 (0.01 μ g/ml) staining of NIH3T3 (A), Mouse Testis (B) and Rat Testis (C) lysates (35 μ g protein in RIPA buffer). Primary incubation was 1 hour. Detected by chemiluminescence.



EB11650 (0.03 μ g/ml) staining of Pig Spleen lysate (35 μ g protein in RIPA buffer). Primary incubation was 1 hour. Detected by chemiluminescence.