

## International Office

### Everest Biotech Ltd

Vector Laboratories, Inc.  
6737 Mowry Ave  
Newark, CA 94560  
United States

Customer Service:

[customerservice@vectorlabs.com](mailto:customerservice@vectorlabs.com)

Technical Service:

[technical@vectorlabs.com](mailto:technical@vectorlabs.com)

Tel: +1 (800) 227-6666

[www.everestbiotech.com](http://www.everestbiotech.com)

**Research Use Only. Not for  
diagnostic or therapeutic use.**

## EB08897 - Goat Anti-PCSK6 Antibody

Size: 100µg specific antibody in 200µl



### Target Protein

**Principal Names:** PCSK6, proprotein convertase subtilisin/kexin type 6, PACE4, SPC4, paired basic amino acid cleaving system 4, subtilisin-like proprotein convertase 4, subtilisin-like protease, subtilisin/kexin-like protease PACE4

**Official Symbol:** PCSK6

**Accession Number(s):** NP\_002561.1; NP\_612192.1; NP\_612195.1; NP\_612197.1; NP\_612196.1; NP\_612198.2; NP\_612193.1; NP\_612194.1

**Human GenelD(s):** [5046](#)

**Important Comments:** This antibody is expected to recognize reported isoforms a, b, g and h (NP\_002561.1; NP\_612192.1; NP\_612193.1; NP\_612194.1 resp.).

### Immunogen

Peptide with sequence C-YHTFSAHQSRSR, from the internal region of the protein sequence according to NP\_002561.1; NP\_612192.1; NP\_612195.1; NP\_612197.1; NP\_612196.1; NP\_612198.2; NP\_612193.1; NP\_612194.1.

Please note the [peptide](#) is available for sale.

### Purification and Storage

Purified from goat serum by ammonium sulphate precipitation followed by antigen affinity chromatography using the immunizing peptide.

Supplied at 0.5 mg/ml in Tris saline, 0.02% sodium azide, pH7.3 with 0.5% bovine serum albumin.

Aliquot and store at -20°C. Minimize freezing and thawing.

### Applications Tested

**Peptide ELISA:** antibody detection limit dilution 1:32000.

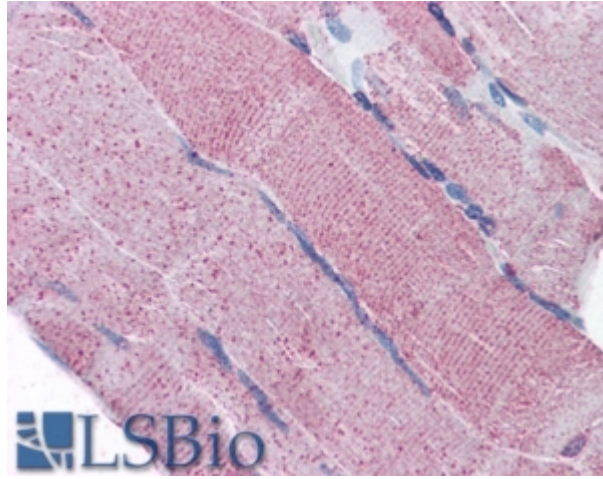
**Western blot:** Preliminary experiments gave an approx 40-45 kDa band in Human Brain (Cerebellum) lysates after 0.2 µg/ml antibody staining. Please note that currently we cannot find an explanation in the literature for the band we observe given the calculated size of 106 kDa according to NP\_002561.1. The 40-45 kDa band was successfully blocked by incubation with the immunizing peptide.

**IHC:** Paraffin embedded Human Skeletal Muscle and Kidney. Recommended concentration: 5µg/ml.

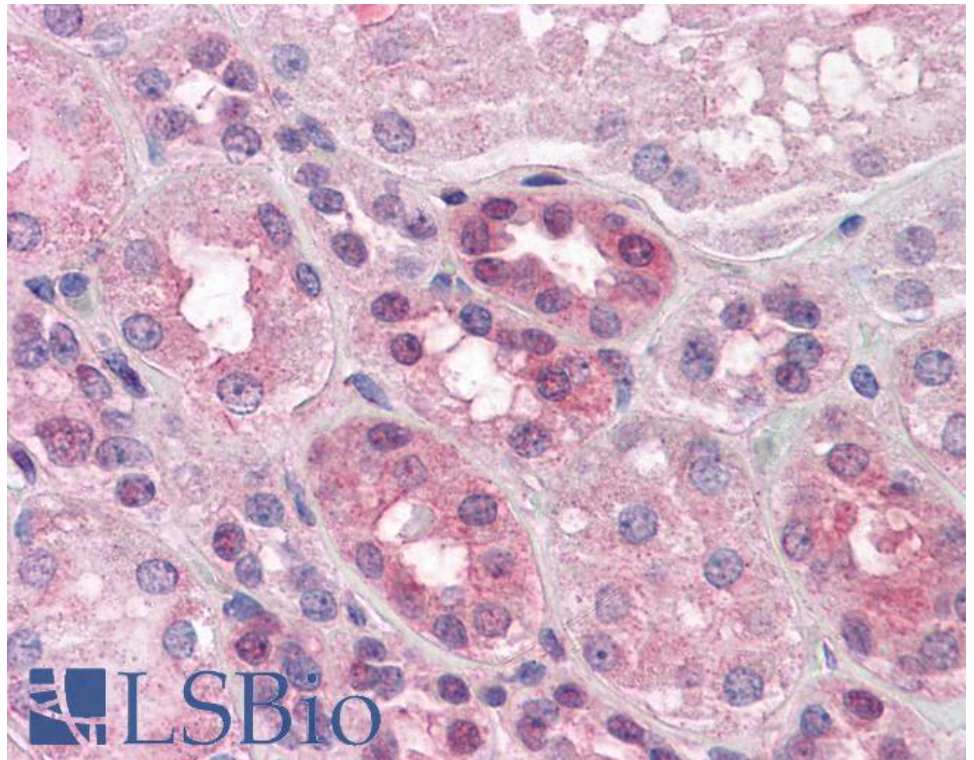
### Species Reactivity

**Tested:** Human

**Expected from sequence similarity:** Human



EB08897 (5µg/ml) staining of paraffin embedded Human Skeletal Muscle. Steamed antigen retrieval with citrate buffer pH 6, AP-staining.



EB08897 (5µg/ml) staining of paraffin embedded Human Kidney. Steamed antigen retrieval with citrate buffer pH 6, AP-staining.