



UK Office

Everest Biotech Ltd

Cherwell Innovation Centre
77 Heyford Park
Upper Heyford
Oxfordshire
OX25 5HD
UK

Enquiries:

info@everestbiotech.com

Sales:

sales@everestbiotech.com

Tech support:

support@everestbiotech.com

Tel: +44 (0)1869 238326

Fax: +44 (0)1869 238327

US Office

Everest Biotech c/o Abcore

405 Maple Street, Suite A106
Ramona,
CA 92065
USA

Inquiries:

info@everestbiotech.com

Sales:

usasales@everestbiotech.com

Tech support:

support@everestbiotech.com

Tel: 888-320-4628 (toll-free)

Fax: 888-841-9041

www.everestbiotech.com

**Research Use Only. Not for
diagnostic or therapeutic use.**

EB06682-T - Goat Anti-PCSK9 (C Terminus) Antibody - Trial

Size: 20µg specific antibody in 40µl



Target Protein

Principal Names: PCSK9, FH3, NARC1, HCHOLA3, proprotein convertase subtilisin/kexin type 9, neural apoptosis regulated convertase 1, hypercholesterolemia, autosomal dominant 3, proprotein convertase subtilisin/kexin type 9, LDLQC1, NARC-1

Official Symbol: PCSK9

Accession Number(s): NP_777596.2

Human GeneID(s): [255738](#)

Immunogen

Peptide with sequence CRSRHQAQASQELQ, from the C Terminus of the protein sequence according to NP_777596.2.

Please note the [peptide](#) is available for sale.

Purification and Storage

Purified from goat serum by ammonium sulphate precipitation followed by antigen affinity chromatography using the immunizing peptide.

Supplied at 0.5 mg/ml in Tris saline, 0.02% sodium azide, pH7.3 with 0.5% bovine serum albumin.

Aliquot and store at -20°C. Minimize freezing and thawing.

Applications Tested

Peptide ELISA: antibody detection limit dilution 1:16000.

Western blot: Approx 75kDa band observed in Human Adipose lysates (calculated MW of 74.3kDa according to NP_777596.2). Recommended concentration: 0.3-1µg/ml.

Primary incubation was 1 hour. Constructs and lysates were as described in Sun et al Hum Mol Genet. 2005 May 1;14(9):1161-9, PMID: 15772090. A customer found positive results in WB on Human Liver.

IHC: Paraffin embedded Human Liver. Recommended concentration: 5-6µg/ml.

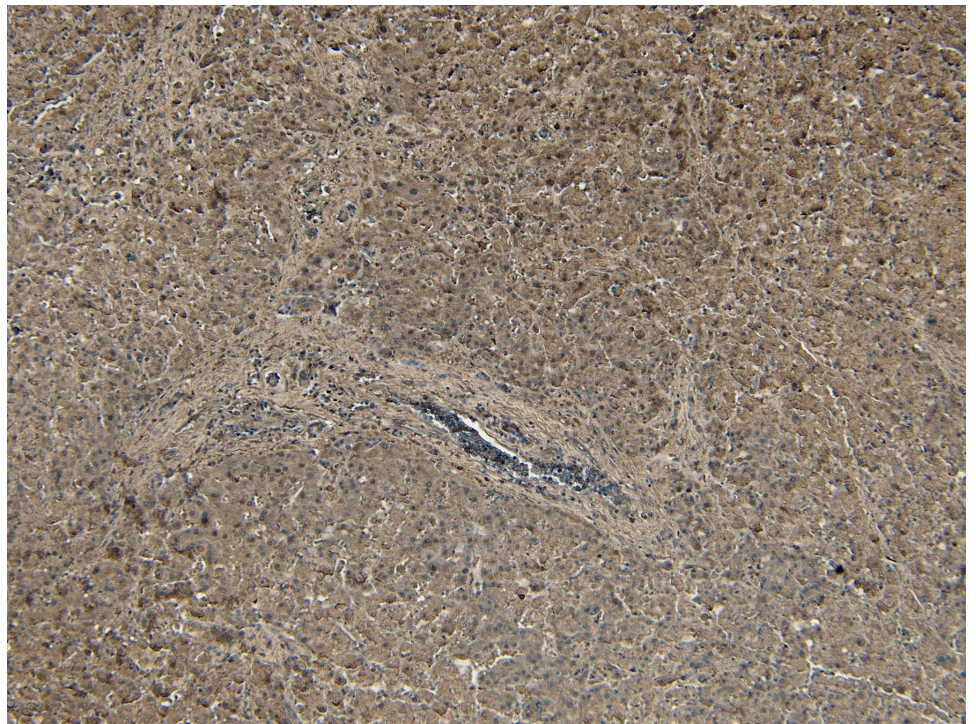
Species Reactivity

Tested: Human

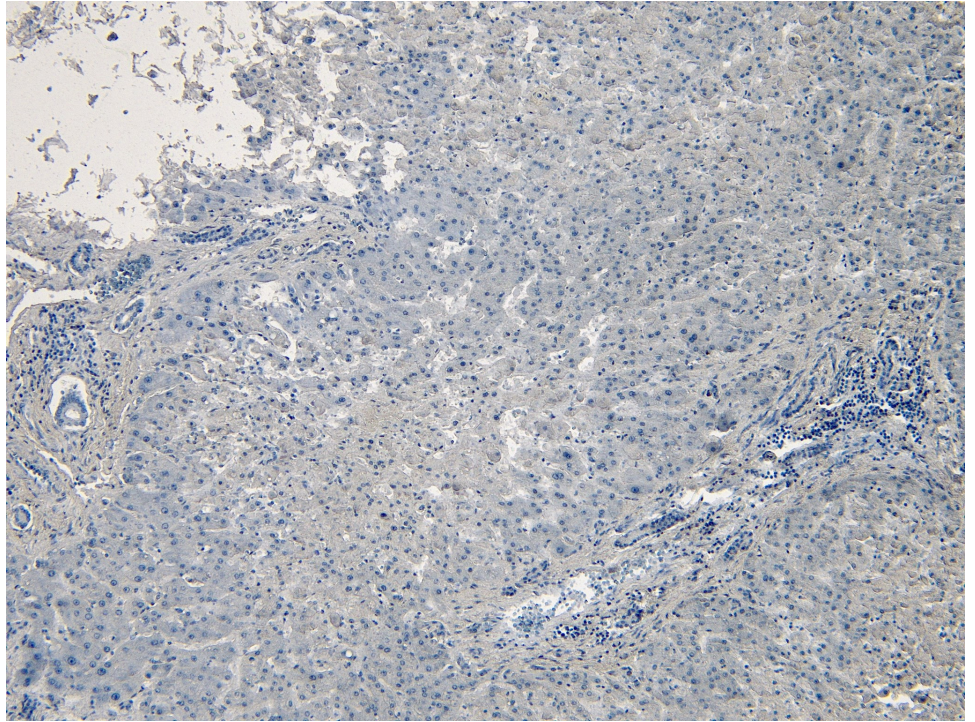
Expected from sequence similarity: Human



EB06682 (0.3 μ g/ml) staining of Human Adipose lysate (35 μ g protein in RIPA buffer). Detected by chemiluminescence.



EB06682 (5 μ g/ml) staining of paraffin embedded Human Liver. Heat induced antigen retrieval with citrate buffer pH 6, HRP-staining.



EB06682 Negative Control showing staining of paraffin embedded Human Liver, with no primary antibody.