

International Office

Everest Biotech Ltd

Vector Laboratories, Inc.
6737 Mowry Ave
Newark, CA 94560
United States

Customer Service:

customerservice@vectorlabs.com

Technical Service:

technical@vectorlabs.com

Tel: +1 (800) 227-6666

www.everestbiotech.com

**Research Use Only. Not for
diagnostic or therapeutic use.**

EB11583 - Goat Anti-PDCD4 (aa210-221) Antibody

Size: 100µg specific antibody in 200µl



Target Protein

Principal Names: H731, MGC33046, MGC33047, neoplastic transformation inhibitor protein, nuclear antigen H731, OTTHUMP00000020483, PDCD4, programmed cell death 4 (neoplastic transformation inhibitor), programmed cell death protein 4, protein 197/15a

Official Symbol: PDCD4

Accession Number(s): NP_055271.2; NP_663314.1; NP_001186421.1

Human GeneID(s): [27250](#)

Non-Human GeneID(s): 18569 (mouse), 64031 (rat)

Important Comments: This antibody is expected to recognize all reported isoforms (NP_055271.2; NP_663314.1; NP_001186421.1).

Immunogen

Peptide with sequence C-EGKASHREMTSK, from the internal region of the protein sequence according to NP_055271.2; NP_663314.1; NP_001186421.1.

Please note the [peptide](#) is available for sale.

Purification and Storage

Purified from goat serum by ammonium sulphate precipitation followed by antigen affinity chromatography using the immunizing peptide.

Supplied at 0.5 mg/ml in Tris saline, 0.02% sodium azide, pH7.3 with 0.5% bovine serum albumin.

Aliquot and store at -20°C. Minimize freezing and thawing.

Applications Tested

Peptide ELISA: antibody detection limit dilution 1:128000.

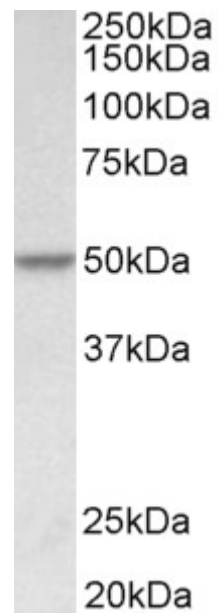
Western blot: Approx 50kDa band observed in lysates of cell line HeLa (calculated MW of 50.2kDa according to NP_001186421.1). Recommended concentration: 0.1-0.3µg/ml.

IHC: Paraffin embedded Human Prostate. Recommended concentration: 5µg/ml.

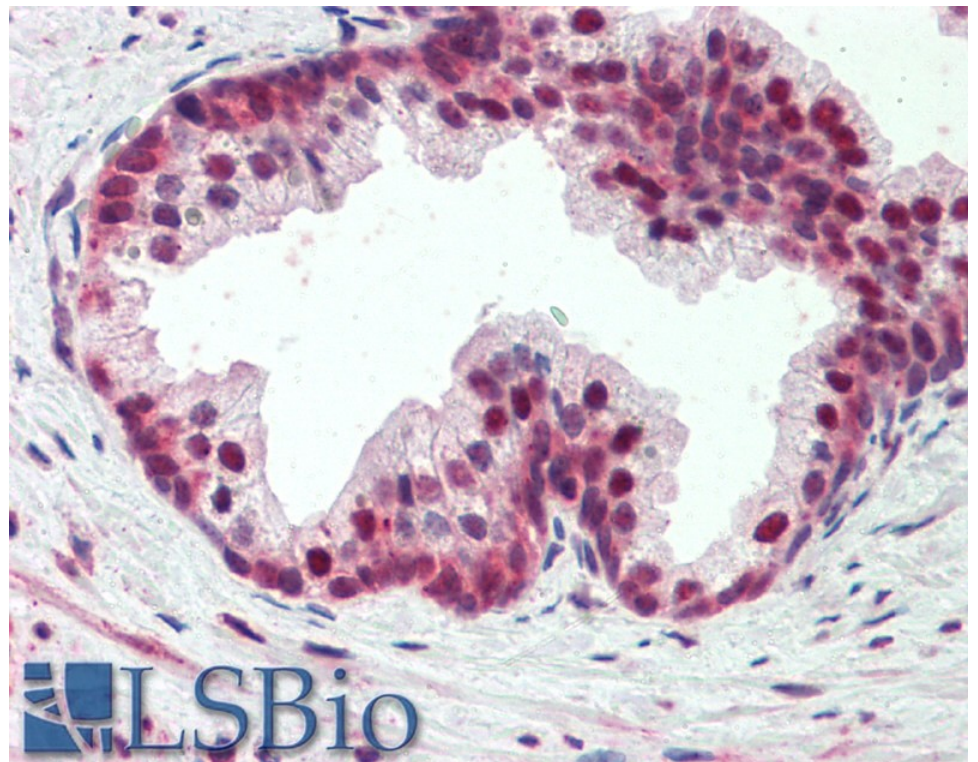
Species Reactivity

Tested: Human

Expected from sequence similarity: Human, Mouse, Rat, Dog, Pig, Cow



EB11583 (0.1µg/ml) staining of HeLa lysate (35µg protein in RIPA buffer). Primary incubation was 1 hour.
Detected by chemiluminescence.



EB11583 (5µg/ml) staining of paraffin embedded Human Prostate. Steamed antigen retrieval with citrate buffer pH 6, AP-staining.