

International Office

Everest Biotech Ltd

Vector Laboratories, Inc.
6737 Mowry Ave
Newark, CA 94560
United States

Customer Service:

customerservice@vectorlabs.com

Technical Service:

technical@vectorlabs.com

Tel: +1 (800) 227-6666

www.everestbiotech.com

**Research Use Only. Not for
diagnostic or therapeutic use.**

EB07935 - Goat Anti-PDE11A Antibody

Size: 100µg specific antibody in 200µl



Target Protein

Principal Names: PDE11A, phosphodiesterase 11A, FLJ23693, MGC133355, MGC133356, PPNAD2, cAMP and cGMP cyclic nucleotide phosphodiesterase 11A, cyclic nucleotide phosphodiesterase 11A, dual 3',5'-cyclic-AMP and -GMP phosphodiesterase 11A

Official Symbol: PDE11A

Accession Number(s): NP_058649.3 ; NP_001070665.1; NP_001070826.1; NP_001070664.1

Human GeneID(s): [50940](#)

Non-Human GeneID(s): 241489 (mouse), 140928 (rat)

Important Comments: This antibody is expected to recognise all four reported isoforms (NP_058649.3 ; NP_001070665.1; NP_001070826.1; NP_001070664.1).

Immunogen

Peptide with sequence C-NSFKESMEKSSYSD, from the internal region of the protein sequence according to NP_058649.3 ; NP_001070665.1; NP_001070826.1; NP_001070664.1.

Please note the [peptide](#) is available for sale.

Purification and Storage

Purified from goat serum by ammonium sulphate precipitation followed by antigen affinity chromatography using the immunizing peptide.

Supplied at 0.5 mg/ml in Tris saline, 0.02% sodium azide, pH7.3 with 0.5% bovine serum albumin.

Aliquot and store at -20°C. Minimize freezing and thawing.

Applications Tested

Peptide ELISA: antibody detection limit dilution 1:2000.

Western blot: Approx 60-65kDa band observed in Human Skeletal Muscle and Human Prostate lysates (calculated MW of 65.7kDa according to NP_001070826.1).

Recommended concentration: 0.5-1.5µg/ml.

IHC: Paraffin embedded Human Prostate. Recommended concentration: 10µg/ml.

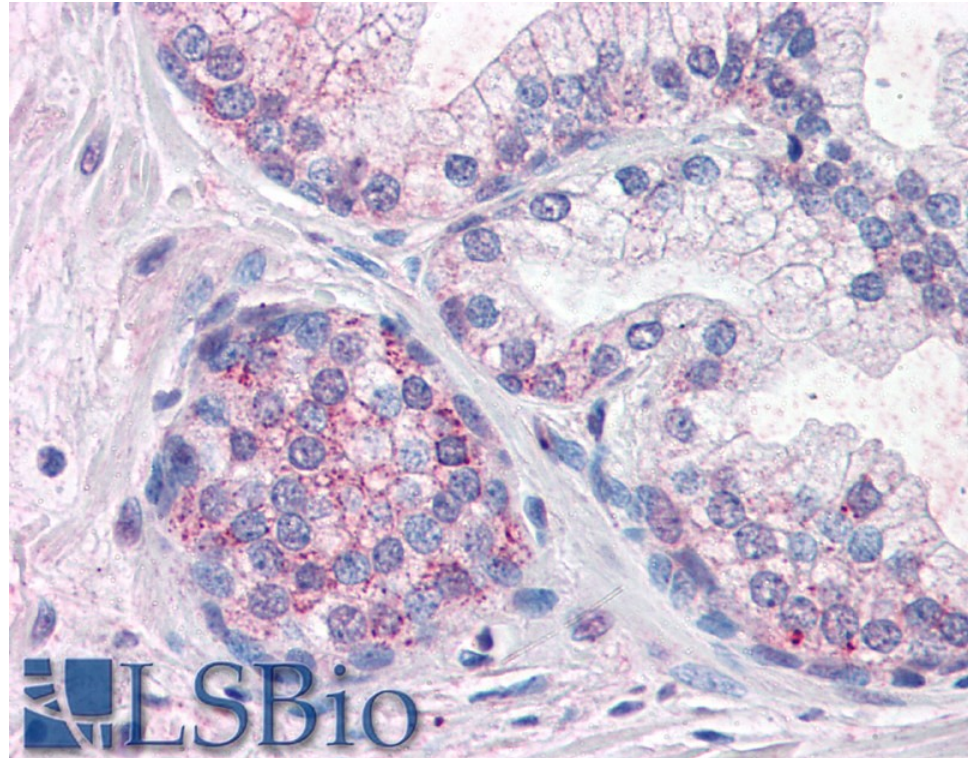
Species Reactivity

Tested: Human

Expected from sequence similarity: Human, Mouse, Rat, Dog

250kDa
150kDa
100kDa
75kDa
50kDa
37kDa
25kDa
20kDa
15kDa

EB07935 (1µg/ml) staining of Human Prostate lysate (35µg protein in RIPA buffer). Primary incubation was 1 hour. Detected by chemiluminescence.



EB07935 (10µg/ml) staining of paraffin embedded Human Prostate. Steamed antigen retrieval with citrate buffer pH 6, AP-staining.