

UK Office

Everest Biotech Ltd

Cherwell Innovation Centre
77 Heyford Park
Upper Heyford
Oxfordshire
OX25 5HD
UK

Enquiries:

info@everestbiotech.com

Sales:

sales@everestbiotech.com

Tech support:

support@everestbiotech.com

Tel: +44 (0)1869 238326

www.everestbiotech.com

**Research Use Only. Not for
diagnostic or therapeutic use.**

EB09802 - Goat Anti-PDE1A Antibody

Size: 100µg specific antibody in 200µl



Target Protein

Principal Names: 3',5' cyclic nucleotide phosphodiesterase, calcium/calmodulin-stimulated cyclic nucleotide phosphodiesterase, calmodulin-dependent phosphodiesterase, HCAM1, HSPDE1A, MGC26303, phosphodiesterase 1A, calmodulin-dependent, phosphodiesterase-1A, PDE1A

Official Symbol: PDE1A

Accession Number(s): NP_005010.2

Human GeneID(s): [5136](#)

Non-Human GeneID(s): 18573 (mouse), 81529 (rat)

Important Comments: This antibody is expected to recognize isoform 1 (NP_005010.2) only.

Immunogen

Peptide with sequence C-DLHKNSIEDLVNAE, from the C Terminus of the protein sequence according to NP_005010.2.

Please note the [peptide](#) is available for sale.

Purification and Storage

Purified from goat serum by ammonium sulphate precipitation followed by antigen affinity chromatography using the immunizing peptide.

Supplied at 0.5 mg/ml in Tris saline, 0.02% sodium azide, pH7.3 with 0.5% bovine serum albumin.

Aliquot and store at -20°C. Minimize freezing and thawing.

Applications Tested

Peptide ELISA: antibody detection limit dilution 1:64000.

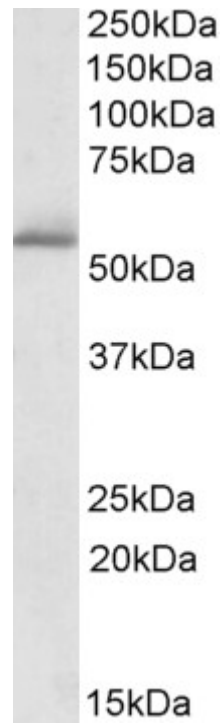
Western blot: Approx 55kDa band observed in Human Brain (Cerebellum) lysates (calculated MW of 62.3kDa according to NP_005010.2). Recommended concentration: 1-3µg/ml. Primary incubation was 1 hour.

IHC: Paraffin embedded Human Kidney. Recommended concentration: 3.75µg/ml.

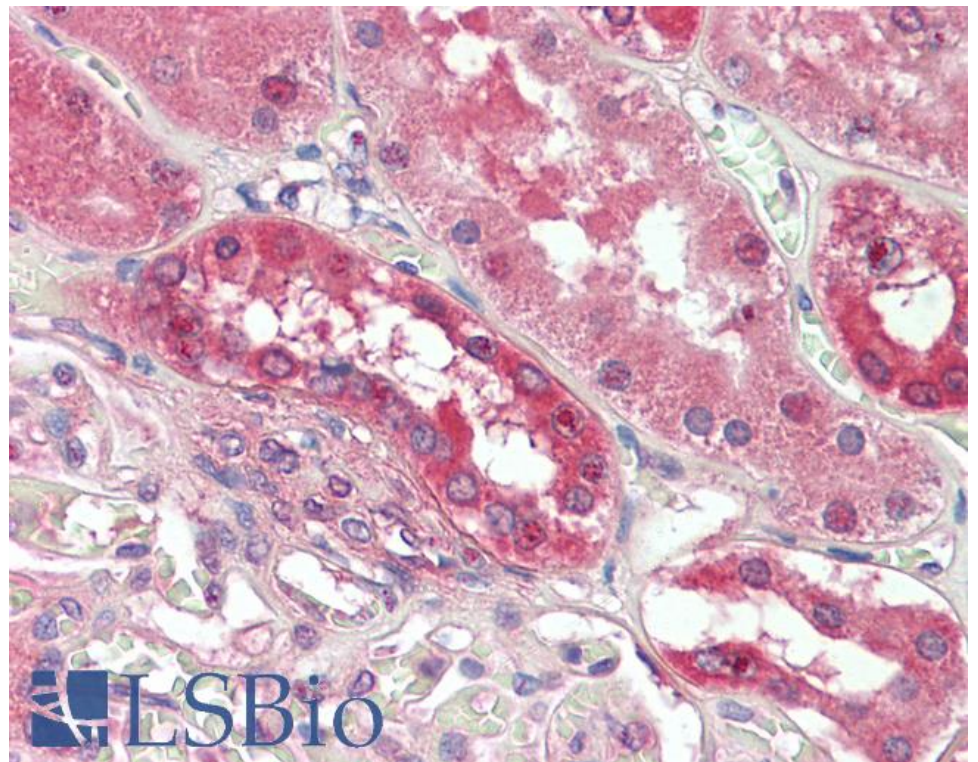
Species Reactivity

Tested: Human

Expected from sequence similarity: Human, Mouse, Rat, Cow



EB09802 (1 μ g/ml) staining of Human Cerebellum lysate (35 μ g protein in RIPA buffer). Detected by chemiluminescence.



EB09802 (3.75 μ g/ml) staining of paraffin embedded Human Kidney. Steamed antigen retrieval with citrate buffer pH 6, AP-staining.