



## UK Office

### Everest Biotech Ltd

Cherwell Innovation Centre  
77 Heyford Park  
Upper Heyford  
Oxfordshire  
OX25 5HD  
UK

Enquiries:

[info@everestbiotech.com](mailto:info@everestbiotech.com)

Sales:

[sales@everestbiotech.com](mailto:sales@everestbiotech.com)

Tech support:

[support@everestbiotech.com](mailto:support@everestbiotech.com)

Tel: +44 (0)1869 238326

Fax: +44 (0)1869 238327

## US Office

### Everest Biotech c/o Abcore

405 Maple Street, Suite A106  
Ramona,  
CA 92065  
USA

Inquiries:

[info@everestbiotech.com](mailto:info@everestbiotech.com)

Sales:

[usasales@everestbiotech.com](mailto:usasales@everestbiotech.com)

Tech support:

[support@everestbiotech.com](mailto:support@everestbiotech.com)

Tel: 888-320-4628 (toll-free)

Fax: 888-841-9041

[www.everestbiotech.com](http://www.everestbiotech.com)

**Research Use Only. Not for  
diagnostic or therapeutic use.**

## EB09802 - Goat Anti-PDE1A Antibody

Size: 100µg specific antibody in 200µl



### Target Protein

**Principal Names:** 3',5' cyclic nucleotide phosphodiesterase, calcium/calmodulin-stimulated cyclic nucleotide phosphodiesterase, calmodulin-dependent phosphodiesterase, HCAM1, HSPDE1A, MGC26303, phosphodiesterase 1A, calmodulin-dependent, phosphodiesterase-1A, PDE1A

**Official Symbol:** PDE1A

**Accession Number(s):** NP\_005010.2

**Human GeneID(s):** [5136](#)

**Non-Human GeneID(s):** 18573 (mouse), 81529 (rat)

**Important Comments:** This antibody is expected to recognize isoform 1 (NP\_005010.2) only.

### Immunogen

Peptide with sequence C-DLHKNSDVLNAE, from the C Terminus of the protein sequence according to NP\_005010.2.

Please note the [peptide](#) is available for sale.

### Purification and Storage

Purified from goat serum by ammonium sulphate precipitation followed by antigen affinity chromatography using the immunizing peptide.

Supplied at 0.5 mg/ml in Tris saline, 0.02% sodium azide, pH7.3 with 0.5% bovine serum albumin.

Aliquot and store at -20°C. Minimize freezing and thawing.

### Applications Tested

**Peptide ELISA:** antibody detection limit dilution 1:64000.

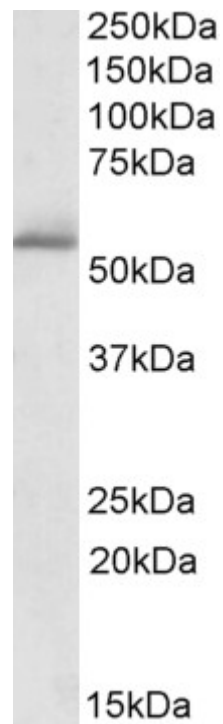
**Western blot:** Approx 55kDa band observed in Human Brain (Cerebellum) lysates (calculated MW of 62.3kDa according to NP\_005010.2). Recommended concentration: 1-3µg/ml. Primary incubation was 1 hour.

**IHC:** Paraffin embedded Human Kidney. Recommended concentration: 3.75µg/ml.

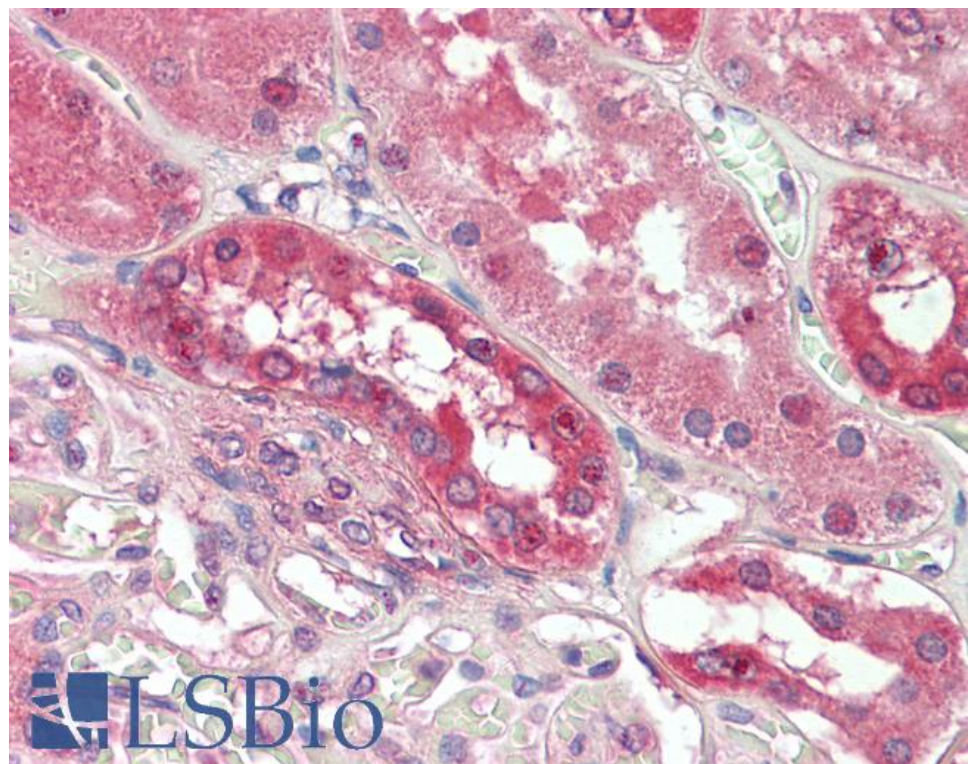
### Species Reactivity

**Tested:** Human

**Expected from sequence similarity:** Human, Mouse, Rat, Cow



EB09802 (1 $\mu$ g/ml) staining of Human Cerebellum lysate (35 $\mu$ g protein in RIPA buffer). Detected by chemiluminescence.



EB09802 (3.75 $\mu$ g/ml) staining of paraffin embedded Human Kidney. Steamed antigen retrieval with citrate buffer pH 6, AP-staining.