



UK Office

Everest Biotech Ltd

Cherwell Innovation Centre
77 Heyford Park
Upper Heyford
Oxfordshire
OX25 5HD
UK

Enquiries:

info@everestbiotech.com

Sales:

sales@everestbiotech.com

Tech support:

support@everestbiotech.com

Tel: +44 (0)1869 238326

Fax: +44 (0)1869 238327

US Office

Everest Biotech c/o Abcore

405 Maple Street, Suite A106
Ramona,
CA 92065
USA

Inquiries:

info@everestbiotech.com

Sales:

usasales@everestbiotech.com

Tech support:

support@everestbiotech.com

Tel: 888-320-4628 (toll-free)

Fax: 888-841-9041

www.everestbiotech.com

**Research Use Only. Not for
diagnostic or therapeutic use.**

EB07046 - Goat Anti-PDE4D Antibody

Size: 100µg specific antibody in 200µl



Target Protein

Principal Names: PDE4D, phosphodiesterase 4D, cAMP-specific (phosphodiesterase E3 duncce homolog, Drosophila), HGNC:8783, DPDE3, HSPDE4D, PDE4DN2, STRK1, cAMP-specific phosphodiesterase 4D, cAMP-specific phosphodiesterase PDE4D6, duncce-like phosphodiesterase E3, phosphodiesterase 4D, cAMP-specific (duncce (Drosophila)-homolog phosphodiesterase E3), DKFZp686M11213, FLJ97311, phosphodiesterase 4D

Official Symbol: PDE4D

Accession Number(s): NP_001184151.1; NP_001184150.1; NP_006194.2; NP_001098101.1; NP_001184152.1; NP_001159371.1

Human GeneID(s): [5144](#)

Important Comments: This antibody is expected to recognize all reported isoforms.

Immunogen

Peptide with sequence QPEACVIDDRSPDT, from the C Terminus of the protein sequence according to NP_001184151.1; NP_001184150.1; NP_006194.2; NP_001098101.1; NP_001184152.1; NP_001159371.1.

Please note the [peptide](#) is available for sale.

Purification and Storage

Purified from goat serum by ammonium sulphate precipitation followed by antigen affinity chromatography using the immunizing peptide.

Supplied at 0.5 mg/ml in Tris saline, 0.02% sodium azide, pH7.3 with 0.5% bovine serum albumin.

Aliquot and store at -20°C. Minimize freezing and thawing.

Applications Tested

Peptide ELISA: antibody detection limit dilution 1:128000.

Western blot: Approx 70+80+90kDa bands observed in lysates of cell line A549. In transfected COS1 transiently expressing PDE4D1 and PDE4D3 bands of approx. 68kDa and 95kDa are observed. These bands are not observed in the untransfected COS1. Calculated MW of 91.1kDa according to PDE4D1 (NP_001098101.1), 76.5kDa according to PDE4D2 (NP_006194.2) and 84.7kDa according to PDE4D3 (NP_001159371.1). Recommended concentration: 0.1-0.3µg/ml.

IHC: Paraffin embedded Human Skeletal Muscle and Heart. Recommended concentration: 5µg/ml.

ELISA: This antibody has been successfully used in ELISA as described in the following paper: Bazhin et al, Mol Immunol. 2010 Jan;47(4):678-84.; PMID: 19939455.

Species Reactivity

Tested: Human

Expected from sequence similarity: Human

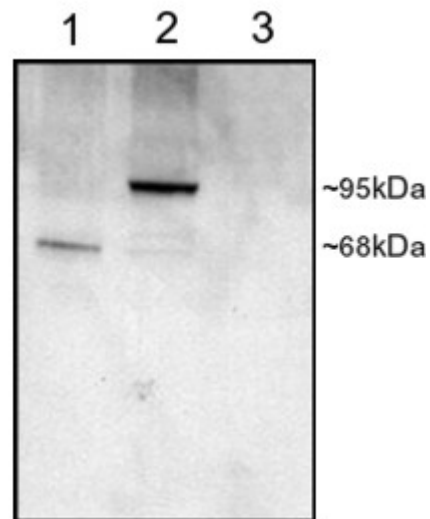
Specific Reference

This antibody has been successfully used in ELISA in the following paper:

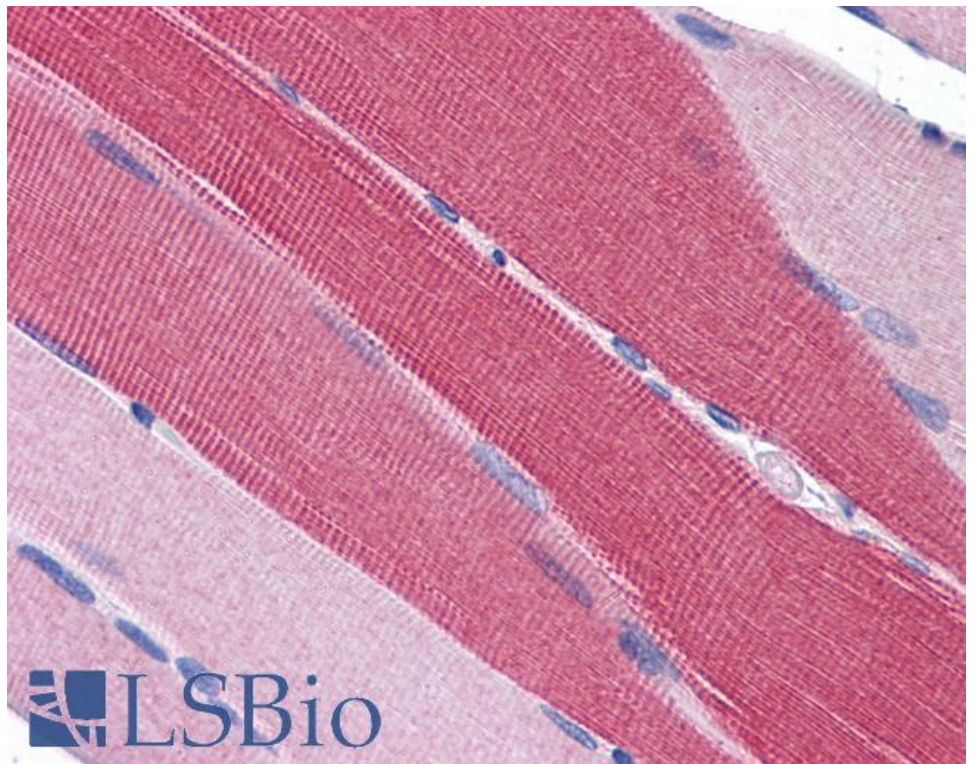
Bazhin AV, Kahnert S, Kimpfler S, Schadendorf D, Umansky V.

Distinct metabolism of cyclic adenosine monophosphate in regulatory and helper CD4+ T cells.

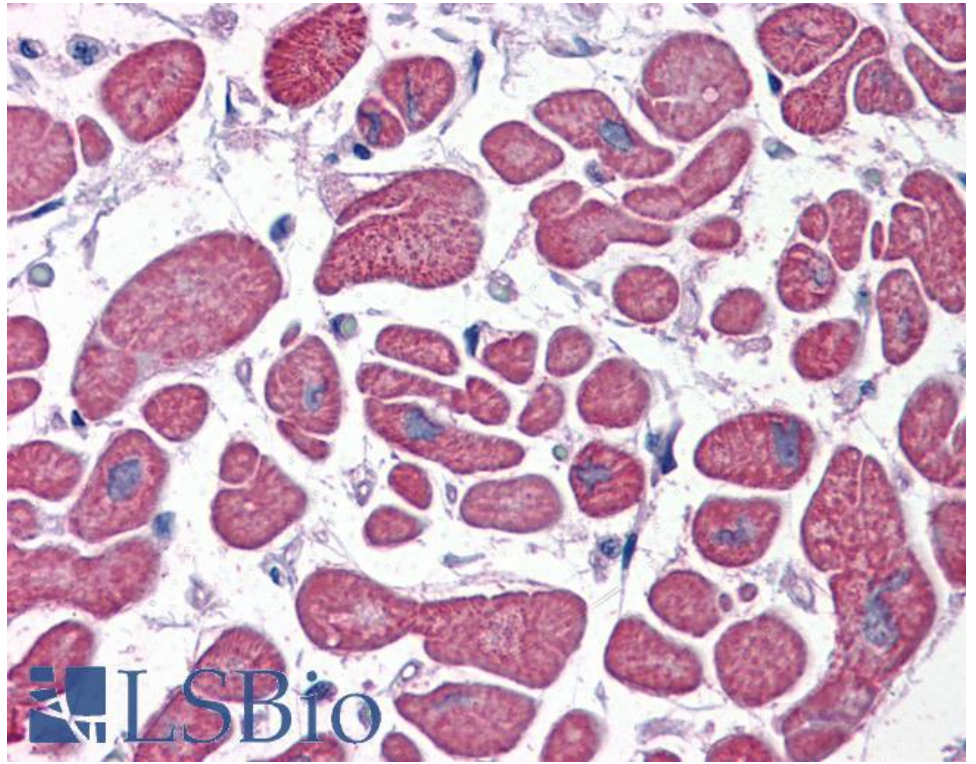
Mol Immunol. 2010 Jan;47(4):678-84.
PMID: 19939455



EB07046 staining (1 μ g/ml) of COS cell lysates (25 μ g protein): transfected with Human PDE4D1 (1), transfected with Human PDE4D3 (2), untransfected (3). Primary incubation was 1 hour. Detected by chemiluminescence.



EB07046 (5 μ g/ml) staining of paraffin embedded Human Skeletal Muscle. Steamed antigen retrieval with citrate buffer pH 6, AP-staining.



EB07046 (5µg/ml) staining of paraffin embedded Human Heart. Steamed antigen retrieval with citrate buffer pH 6, AP-staining.