



International Office

Everest Biotech Ltd

Vector Laboratories, Inc.
6737 Mowry Ave
Newark, CA 94560
United States

Customer Service:

customerservice@vectorlabs.com

Technical Service:

technical@vectorlabs.com

Tel: +1 (800) 227-6666

www.everestbiotech.com

**Research Use Only. Not for
diagnostic or therapeutic use.**

EB07722 - Goat Anti-PDIA2 / PDIP Antibody

Size: 100µg specific antibody in 200µl



Target Protein

Principal Names: PDIA2, PDIP, protein disulfide isomerase family A, member 2, LA16c-314G4.2, PDA2, PDI, PDIR, Rho GDP dissociation inhibitor gamma, pancreatic protein disulfide isomerase, protein disulfide isomerase, pancreatic, protein disulfide isomerase-associated 2

Official Symbol: PDIA2

Accession Number(s): NP_006840.2

Human GenelD(s): [64714](#)

Non-Human GenelD(s): 69191 (mouse)

Immunogen

Peptide with sequence C-NLETTKKYAPVD, from the internal region of the protein sequence according to NP_006840.2.

Please note the [peptide](#) is available for sale.

Purification and Storage

Purified from goat serum by ammonium sulphate precipitation followed by antigen affinity chromatography using the immunizing peptide.

Supplied at 0.5 mg/ml in Tris saline, 0.02% sodium azide, pH7.3 with 0.5% bovine serum albumin.

Aliquot and store at -20°C. Minimize freezing and thawing.

Applications Tested

Peptide ELISA: antibody detection limit dilution 1:64000.

Western blot: Approx 60kDa band observed in Human Pancreas lysates (calculated MW of 58.2kDa according to NP_006840.2). Recommended concentration: 0.01-0.03µg/ml. Primary incubation was 1 hour.

IHC: Paraffin embedded Human Small Intestine and Heart. Recommended concentration: 3.75µg/ml.

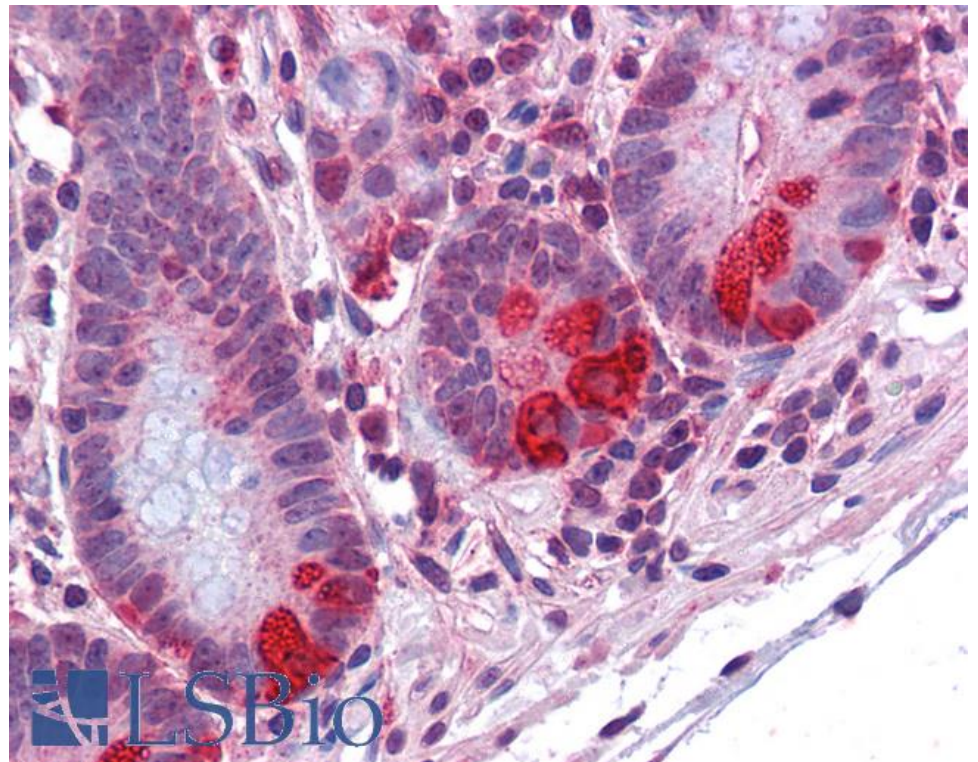
Species Reactivity

Tested: Human

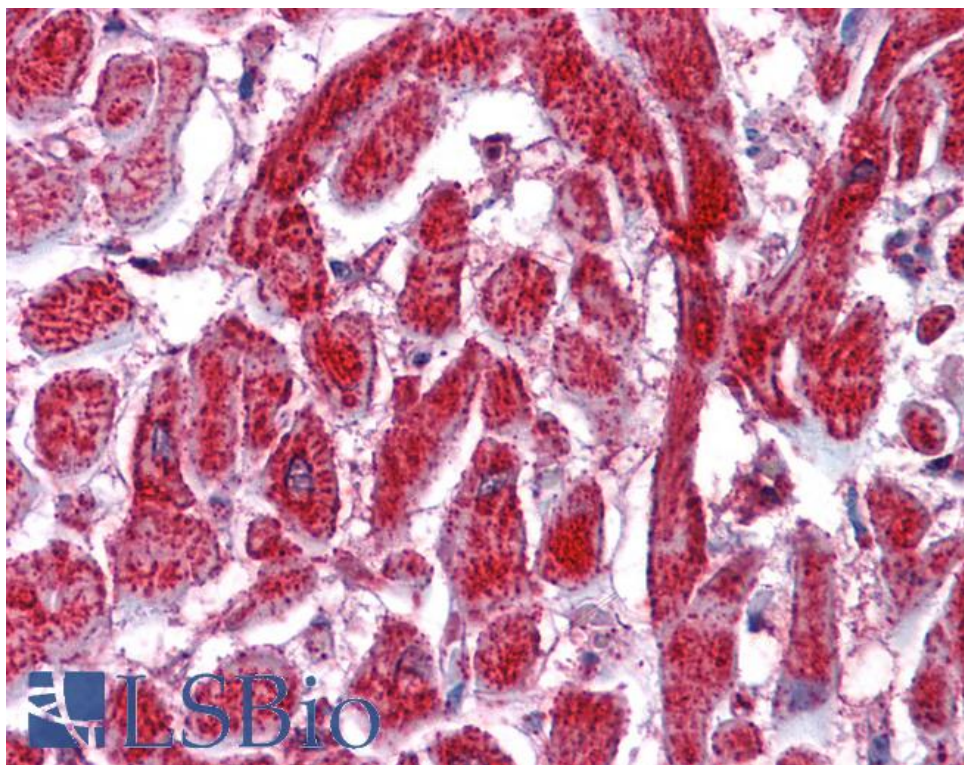
Expected from sequence similarity: Human, Mouse, Rat



EB07722 (0.03 μ g/ml) staining of Human Pancreas lysate (35 μ g protein in RIPA buffer). Detected by chemiluminescence.



EB07722 (3.75 μ g/ml) staining of paraffin embedded Human Small Intestine. Steamed antigen retrieval with citrate buffer pH 6, AP-staining.



EB07722 (3.75µg/ml) staining of paraffin embedded Human Heart. Steamed antigen retrieval with citrate buffer pH 6, AP-staining.