



## UK Office

### Everest Biotech Ltd

Cherwell Innovation Centre  
77 Heyford Park  
Upper Heyford  
Oxfordshire  
OX25 5HD  
UK

Enquiries:

[info@everestbiotech.com](mailto:info@everestbiotech.com)

Sales:

[sales@everestbiotech.com](mailto:sales@everestbiotech.com)

Tech support:

[support@everestbiotech.com](mailto:support@everestbiotech.com)

Tel: +44 (0)1869 238326

[www.everestbiotech.com](http://www.everestbiotech.com)

**Research Use Only. Not for  
diagnostic or therapeutic use.**

## EB05735 - Goat Anti-PDIA3 / ERp57 / GRP58 Antibody

Size: 100µg specific antibody in 200µl



### Target Protein

**Principal Names:** PDIA3, GRP58, ERp57, protein disulfide isomerase family A, member 3, ERp60, ERp61, GRP57, HsT17083, P58, PI-PLC, 58 kDa microsomal protein, endoplasmic reticulum P58, glucose regulated protein, 58kDa, phospholipase C-alpha, protein disulfide isomerase-associated 3, ER60, protein disulfide-isomerase A3

**Official Symbol:** PDIA3

**Accession Number(s):** NP\_005304.3

**Human GeneID(s):** [2923](#)

**Non-Human GeneID(s):** 14827 (mouse), 29468 (rat)

### Immunogen

Peptide with sequence C-EEKPKKKKKAQEDL, from the C Terminus of the protein sequence according to NP\_005304.3.

Please note the [peptide](#) is available for sale.

### Purification and Storage

Purified from goat serum by ammonium sulphate precipitation followed by antigen affinity chromatography using the immunizing peptide.

Supplied at 0.5 mg/ml in Tris saline, 0.02% sodium azide, pH7.3 with 0.5% bovine serum albumin.

Aliquot and store at -20°C. Minimize freezing and thawing.

### Applications Tested

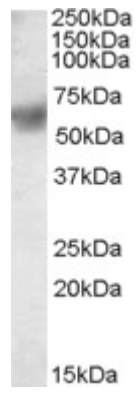
**Peptide ELISA:** antibody detection limit dilution 1:4000.

**Western blot:** Approx 60kDa band observed in lysates of cell lines NIH3T3, HepG2 and Daudi (calculated MW of 56.8kDa according to NP\_005304.3). Recommended concentration: 0.1-0.3µg/ml. Primary incubation was for 1 hour.

### Species Reactivity

**Tested:** Human, Mouse

**Expected from sequence similarity:** Human, Mouse, Rat, Cow



EB05735 staining (0.1 $\mu$ g/ml) of Daudi lysate (RIPA buffer, 35 $\mu$ g total protein per lane). Detected by chemiluminescence.