

UK Office

Everest Biotech Ltd

Cherwell Innovation Centre
77 Heyford Park
Upper Heyford
Oxfordshire
OX25 5HD
UK

Enquiries:

info@everestbiotech.com

Sales:

sales@everestbiotech.com

Tech support:

support@everestbiotech.com

Tel: +44 (0)1869 238326

www.everestbiotech.com

**Research Use Only. Not for
diagnostic or therapeutic use.**

EB07477 - Goat Anti-PEBP1 / RKIP (Internal) Antibody

Size: 100µg specific antibody in 200µl



Target Protein

Principal Names: PEBP1, RKIP, phosphatidylethanolamine binding protein 1, HCNP, PBP, PEBP, prostatic binding protein, RAF kinase inhibitor protein, epididymis luminal protein 210, epididymis secretory protein Li 34, epididymis secretory protein Li 96, HCNPpp, HEL-210, HEL-S-34, HEL-S-96, hippocampal cholinergic neurostimulating peptide, neuropolypeptide h3, PEBP-1, Raf kinase inhibitory protein

Official Symbol: PEBP1

Accession Number(s): NP_002558.1

Human GeneID(s): [5037](#)

Non-Human GeneID(s): 23980 (mouse), 29542 (rat)

Immunogen

Peptide with sequence C-DPDAPSRKDPKYRE, from the internal region of the protein sequence according to NP_002558.1.

Please note the [peptide](#) is available for sale.

Purification and Storage

Purified from goat serum by ammonium sulphate precipitation followed by antigen affinity chromatography using the immunizing peptide.

Supplied at 0.5 mg/ml in Tris saline, 0.02% sodium azide, pH7.3 with 0.5% bovine serum albumin.

Aliquot and store at -20°C. Minimize freezing and thawing.

Applications Tested

Peptide ELISA: antibody detection limit dilution 1:128000.

Western blot: Approx 21kDa band observed in Human Prostate lysates (calculated MW of 21.1kDa according to NP_002558.1). Recommended concentration: 0.01-0.03µg/ml.

IHC: Paraffin embedded Human Adrenal Gland and Kidney. Recommended concentration: 5µg/ml.

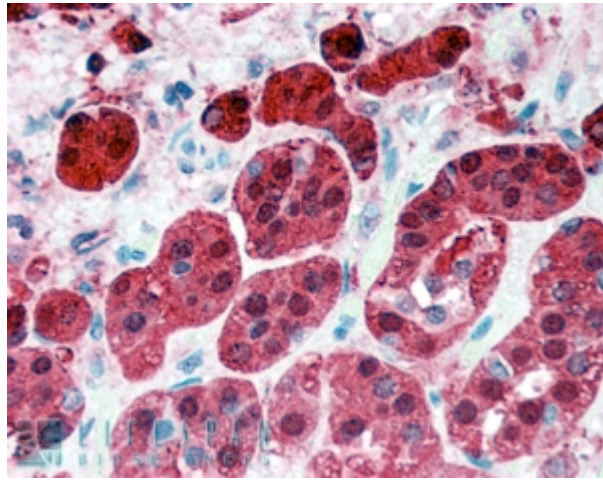
Species Reactivity

Tested: Human

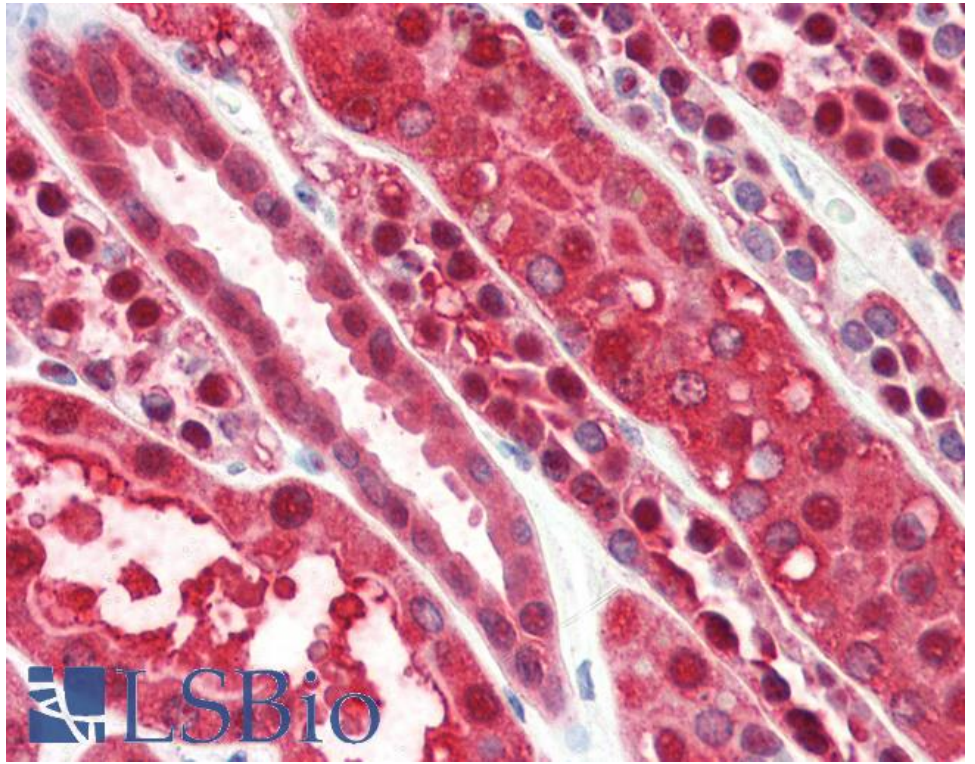
Expected from sequence similarity: Human, Mouse, Rat, Dog, Pig, Cow



EB07477 (0.01 μ g/ml) staining of Human Prostate lysate (35 μ g protein in RIPA buffer). Primary incubation was 1 hour. Detected by chemiluminescence.



EB07477 (5 μ g/ml) staining of paraffin embedded Human Adrenal Gland. Steamed antigen retrieval with citrate buffer Ph 6, AP-staining.



EB07477 (5µg/ml) staining of paraffin embedded Human Kidney. Steamed antigen retrieval with citrate buffer pH 6, AP-staining.