



## UK Office

### Everest Biotech Ltd

Cherwell Innovation Centre  
77 Heyford Park  
Upper Heyford  
Oxfordshire  
OX25 5HD  
UK

Enquiries:

[info@everestbiotech.com](mailto:info@everestbiotech.com)

Sales:

[sales@everestbiotech.com](mailto:sales@everestbiotech.com)

Tech support:

[support@everestbiotech.com](mailto:support@everestbiotech.com)

Tel: +44 (0)1869 238326

Fax: +44 (0)1869 238327

## US Office

### Everest Biotech c/o Abcore

405 Maple Street, Suite A106  
Ramona,  
CA 92065  
USA

Inquiries:

[info@everestbiotech.com](mailto:info@everestbiotech.com)

Sales:

[usasales@everestbiotech.com](mailto:usasales@everestbiotech.com)

Tech support:

[support@everestbiotech.com](mailto:support@everestbiotech.com)

Tel: 888-320-4628 (toll-free)

Fax: 888-841-9041

[www.everestbiotech.com](http://www.everestbiotech.com)

**Research Use Only. Not for  
diagnostic or therapeutic use.**

## EB07477 - Goat Anti-PEBP1 / RKIP (Internal) Antibody

Size: 100µg specific antibody in 200µl



### Target Protein

**Principal Names:** PEBP1, RKIP, phosphatidylethanolamine binding protein 1, HCNP, PBP, PEBP, prostatic binding protein, RAF kinase inhibitor protein, epididymis luminal protein 210, epididymis secretory protein Li 34, epididymis secretory protein Li 96, HCNPpp, HEL-210, HEL-S-34, HEL-S-96, hippocampal cholinergic neurostimulating peptide, neuropolypeptide h3, PEBP-1, Raf kinase inhibitory protein

**Official Symbol:** PEBP1

**Accession Number(s):** NP\_002558.1

**Human GeneID(s):** [5037](#)

**Non-Human GeneID(s):** 23980 (mouse), 29542 (rat)

### Immunogen

Peptide with sequence C-DPDAPSRKDPKYRE, from the internal region of the protein sequence according to NP\_002558.1.

Please note the [peptide](#) is available for sale.

### Purification and Storage

Purified from goat serum by ammonium sulphate precipitation followed by antigen affinity chromatography using the immunizing peptide.

Supplied at 0.5 mg/ml in Tris saline, 0.02% sodium azide, pH7.3 with 0.5% bovine serum albumin.

Aliquot and store at -20°C. Minimize freezing and thawing.

### Applications Tested

**Peptide ELISA:** antibody detection limit dilution 1:128000.

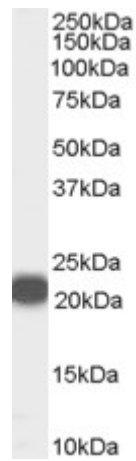
**Western blot:** Approx 21kDa band observed in Human Prostate lysates (calculated MW of 21.1kDa according to NP\_002558.1). Recommended concentration: 0.01-0.03µg/ml.

**IHC:** Paraffin embedded Human Adrenal Gland and Kidney. Recommended concentration: 5µg/ml.

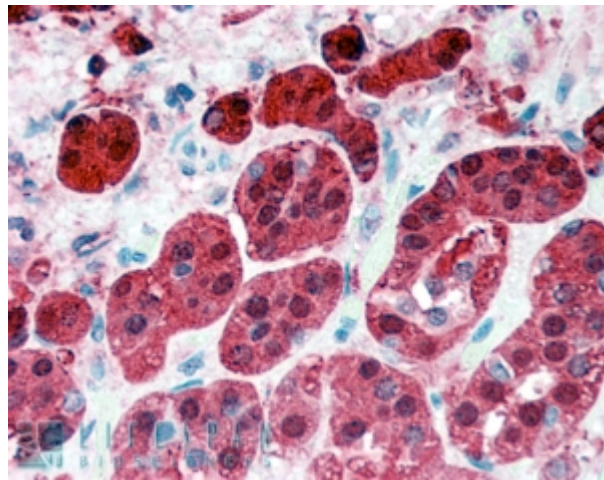
### Species Reactivity

**Tested:** Human

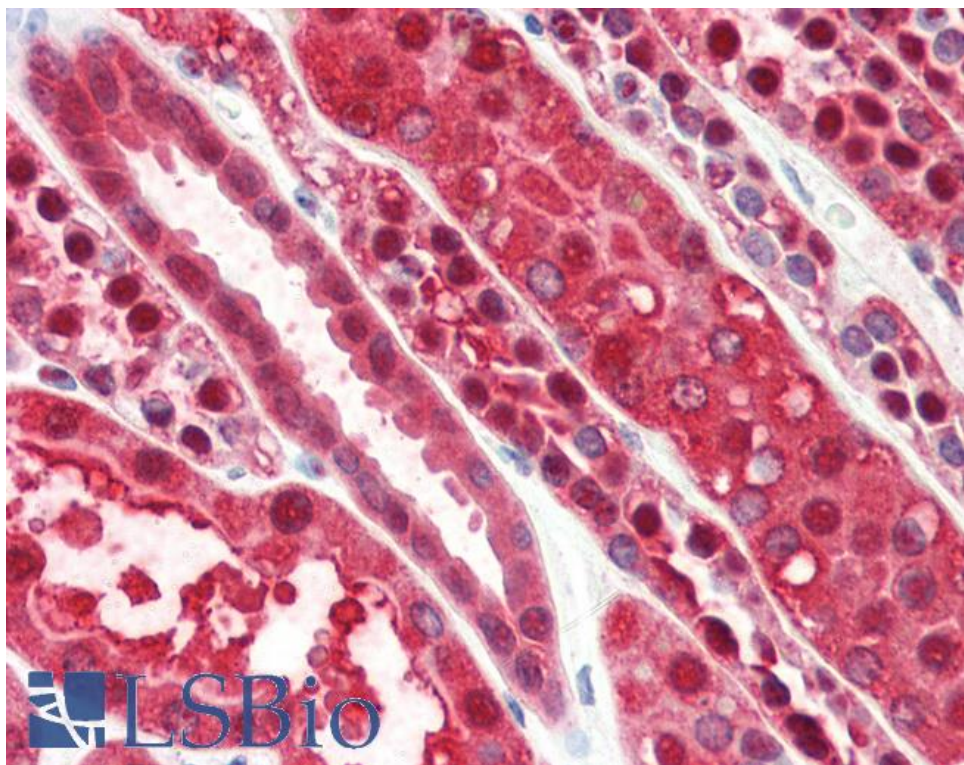
**Expected from sequence similarity:** Human, Mouse, Rat, Dog, Pig, Cow



EB07477 (0.01 $\mu$ g/ml) staining of Human Prostate lysate (35 $\mu$ g protein in RIPA buffer). Primary incubation was 1 hour. Detected by chemiluminescence.



EB07477 (5 $\mu$ g/ml) staining of paraffin embedded Human Adrenal Gland. Steamed antigen retrieval with citrate buffer Ph 6, AP-staining.



EB07477 (5µg/ml) staining of paraffin embedded Human Kidney. Steamed antigen retrieval with citrate buffer pH 6, AP-staining.