

UK Office

Everest Biotech Ltd

Cherwell Innovation Centre
77 Heyford Park
Upper Heyford
Oxfordshire
OX25 5HD
UK

Enquiries:

info@everestbiotech.com

Sales:

sales@everestbiotech.com

Tech support:

support@everestbiotech.com

Tel: +44 (0)1869 238326

www.everestbiotech.com

**Research Use Only. Not for
diagnostic or therapeutic use.**

EB09427 - Goat Anti-PEBP4 Antibody

Size: 100µg specific antibody in 200µl



Target Protein

Principal Names: PEBP4, phosphatidylethanolamine-binding protein 4, CORK-1, CORK1, GWTM1933, MGC22776, PRO4408, cousin-of-RKIP 1 protein

Official Symbol: PEBP4

Accession Number(s): NP_659399.2

Human GeneID(s): [157310](#)

Immunogen

Peptide with sequence C-RERASEPKHKNQAE, from the C Terminus of the protein sequence according to NP_659399.2.

Please note the [peptide](#) is available for sale.

Purification and Storage

Purified from goat serum by ammonium sulphate precipitation followed by antigen affinity chromatography using the immunizing peptide.

Supplied at 0.5 mg/ml in Tris saline, 0.02% sodium azide, pH7.3 with 0.5% bovine serum albumin.

Aliquot and store at -20°C. Minimize freezing and thawing.

Applications Tested

Peptide ELISA: antibody detection limit dilution 1:4000.

Western blot: Approx 26kDa band observed in Human Heart lysates (calculated MW of 25.7kDa according to NP_659399.2). Recommended concentration: 1-3µg/ml. An additional band of unknown identity was also consistently observed at 30kDa. This band was successfully blocked by incubation with the immunizing peptide. We would appreciate any feedback from people in the field - have any such results been reported with other antibodies/lysates? Have any further splice variants/modified forms been reported?

IHC: In paraffin embedded Human Pancreas shows staining consistent with lysosomes. Recommended concentration, 5-10µg/ml.

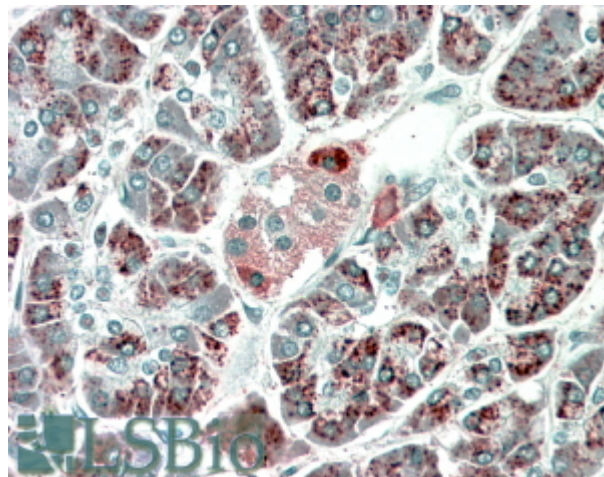
Species Reactivity

Tested: Human

Expected from sequence similarity: Human



EB09427 (1µg/ml) staining of Human Heart lysate (35µg protein in RIPA buffer). Primary incubation was 1 hour. Detected by chemiluminescence.



EB09427 (5µg/ml) staining of paraffin embedded Human Pancreas. Microwaved antigen retrieval with Tris/EDTA buffer pH9, HRP-staining.