



UK Office

Everest Biotech Ltd

Cherwell Innovation Centre
77 Heyford Park
Upper Heyford
Oxfordshire
OX25 5HD
UK

Enquiries:

info@everestbiotech.com

Sales:

sales@everestbiotech.com

Tech support:

support@everestbiotech.com

Tel: +44 (0)1869 238326

www.everestbiotech.com

**Research Use Only. Not for
diagnostic or therapeutic use.**

EB12606 - Goat Anti-PECAM1 / CD31 (aa218-231) Antibody

Size: 100µg specific antibody in 200µl



Target Protein

Principal Names: PECAM1, platelet/endothelial cell adhesion molecule 1, CD31, CD31/EndoCAM, GPIIA', PECA1, PECAM-1, endoCAM, CD31 antigen, platelet endothelial cell adhesion molecule

Official Symbol: PECAM1

Accession Number(s): NP_000433.4

Human GeneID(s): [5175](#)

Immunogen

Peptide with sequence C-TSESTKSELVTVTE, from the internal region of the protein sequence according to NP_000433.4.

Please note the [peptide](#) is available for sale.

Purification and Storage

Purified from goat serum by ammonium sulphate precipitation followed by antigen affinity chromatography using the immunizing peptide.

Supplied at 0.5 mg/ml in Tris saline, 0.02% sodium azide, pH7.3 with 0.5% bovine serum albumin.

Aliquot and store at -20°C. Minimize freezing and thawing.

Applications Tested

Peptide ELISA: antibody detection limit dilution 1:128000.

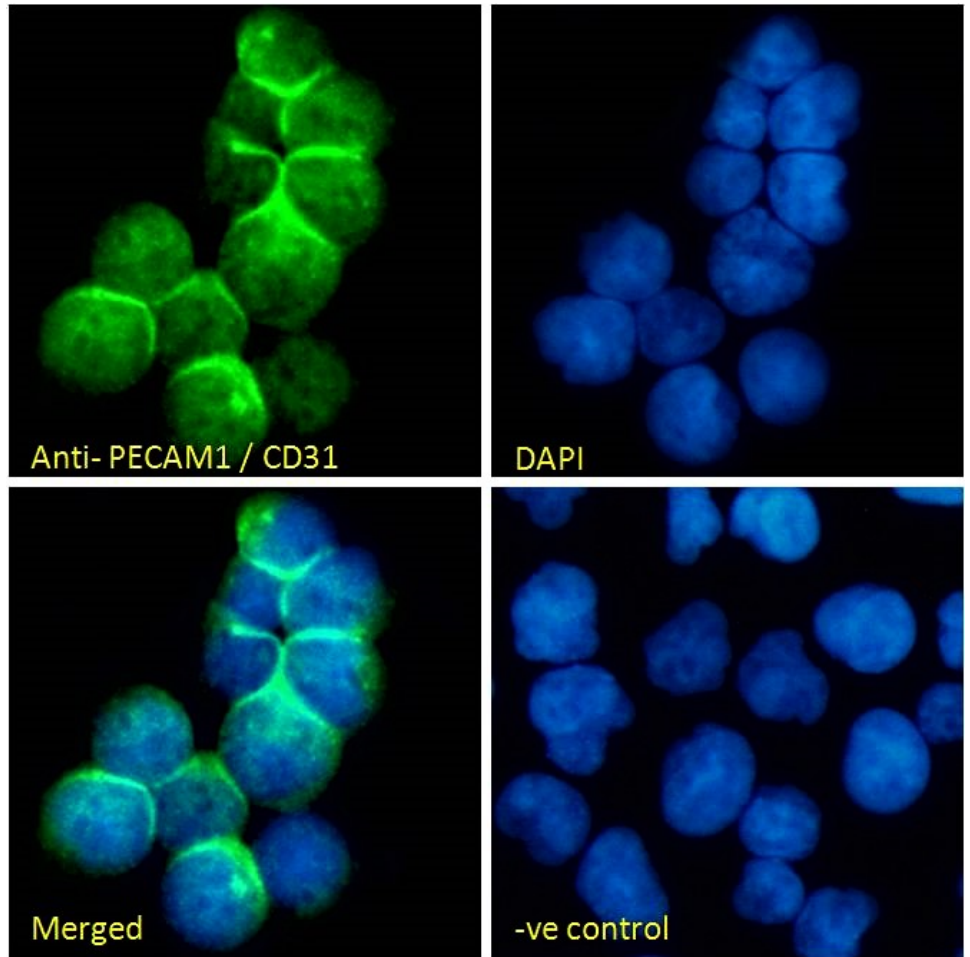
IHC: Paraffin embedded Human Kidney. Recommended concentration: 4-6µg/ml.

Immunofluorescence: Strong expression of the protein seen in the cell junctions/ PM of Jurkat cells. Recommended concentration: 10µg/ml.

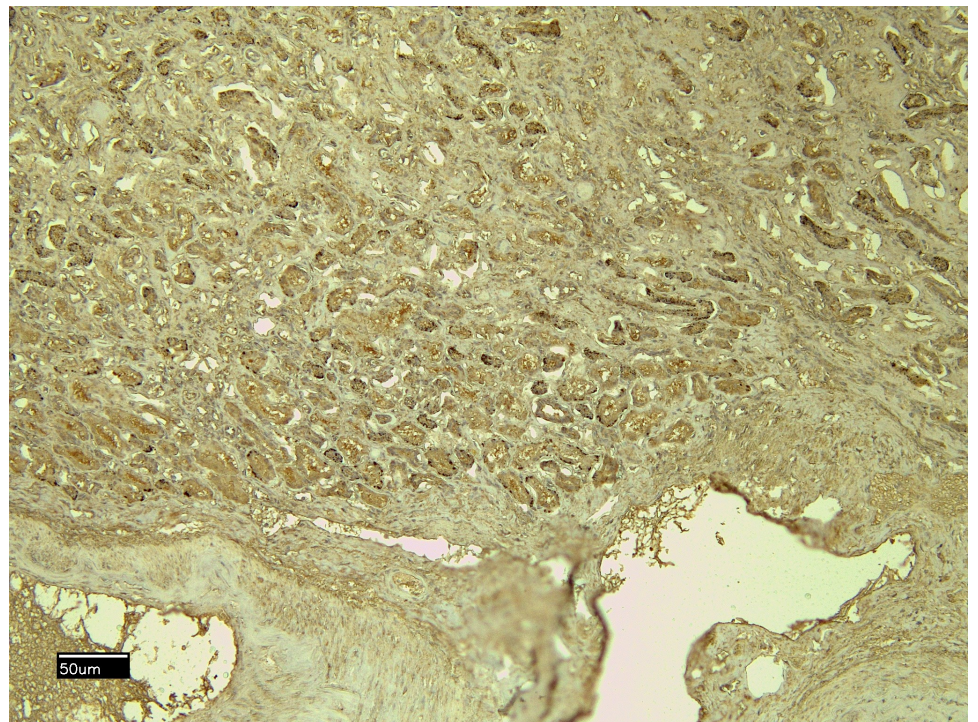
Species Reactivity

Tested: Human

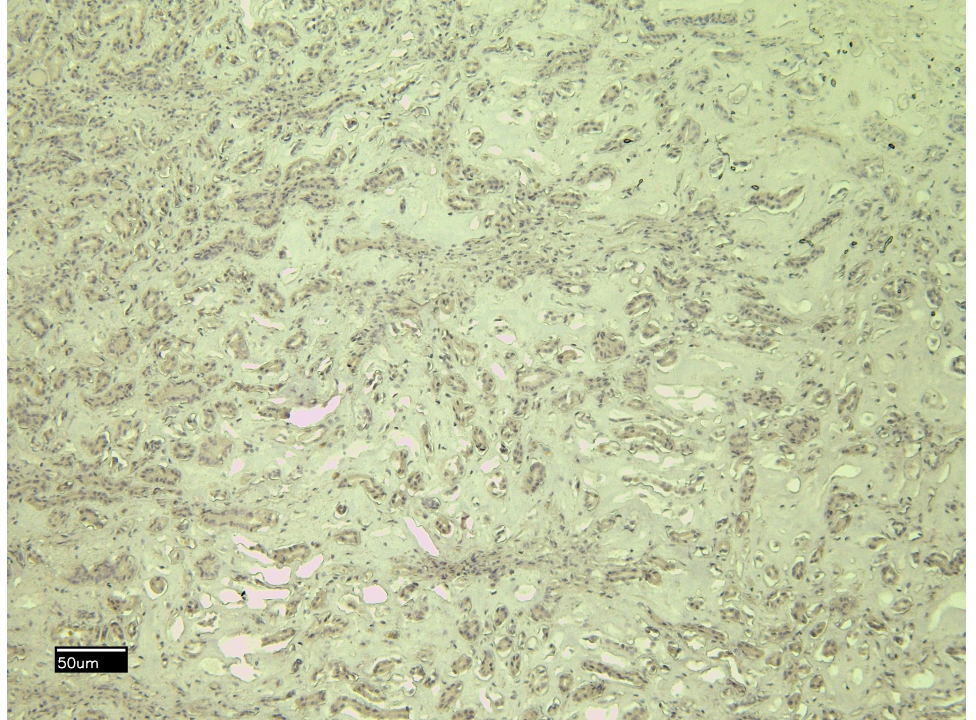
Expected from sequence similarity: Human



EB12606 Immunofluorescence analysis of paraformaldehyde fixed Jurkat cells, permeabilized with 0.15% Triton. Primary incubation 1hr (10ug/ml) followed by Alexa Fluor 488 secondary antibody (2ug/ml), showing cell junction staining. The nuclear stain is DAPI (blue). Negative control: Unimmunized goat IgG (10ug/ml) followed by Alexa Fluor 488 secondary antibody (2ug/ml).



EB12606 (4 μ g/ml) staining of paraffin embedded Human Kidney. Heat induced antigen retrieval with citrate buffer pH 6, HRP-staining.



EB12606 Negative Control showing staining of paraffin embedded Human Kidney, with no primary antibody.