



## UK Office

### Everest Biotech Ltd

Cherwell Innovation Centre  
77 Heyford Park  
Upper Heyford  
Oxfordshire  
OX25 5HD  
UK

Enquiries:

[info@everestbiotech.com](mailto:info@everestbiotech.com)

Sales:

[sales@everestbiotech.com](mailto:sales@everestbiotech.com)

Tech support:

[support@everestbiotech.com](mailto:support@everestbiotech.com)

Tel: +44 (0)1869 238326

[www.everestbiotech.com](http://www.everestbiotech.com)

**Research Use Only. Not for  
diagnostic or therapeutic use.**

## EB06201-T - Goat Anti-Pericentrin 1 / NUP85 Antibody - Trial

Size: 20µg specific antibody in 40µl



### Target Protein

**Principal Names:** NUP85, pericentrin 1, PCNT1, PCN, PCNT, frount, nucleoporin Nup75, nucleoporin 85kDa, FLJ12549, Nup75, nucleoporin 85

**Official Symbol:** NUP85

**Accession Number(s):** NP\_079120.1; NP\_001290205.1; NP\_001317401.1

**Human GeneID(s):** [79902](#)

**Non-Human GeneID(s):** 18541 (mouse)

**Important Comments:** This antibody is expected to recognise all reported isoforms.

### Immunogen

Peptide with sequence C-ARAIIREGSLEGS, from the C Terminus of the protein sequence according to NP\_079120.1; NP\_001290205.1; NP\_001317401.1.

Please note the [peptide](#) is available for sale.

### Purification and Storage

Purified from goat serum by ammonium sulphate precipitation followed by antigen affinity chromatography using the immunizing peptide.

Supplied at 0.5 mg/ml in Tris saline, 0.02% sodium azide, pH7.3 with 0.5% bovine serum albumin.

Aliquot and store at -20°C. Minimize freezing and thawing.

### Applications Tested

**Peptide ELISA:** antibody detection limit dilution 1:32000.

**Western blot:** Approx. 75kDa band observed in lysates of cell line HeLa and approx. 70kDa in NIH3T3 cell lysates and in nuclear lysates of cell lines HeLa and HEK293 (calculated MW of 75.0kDa according to NP\_079120.1). Recommended concentration: 0.3-1µg/ml. Primary incubation 1 hour at room temperature.

**Positive Control:** A batch specific positive control lysate is available for this product. Please contact [Sales@everestbiotech.com](mailto:Sales@everestbiotech.com) for availability.

**Immunofluorescence:** Strong expression of the protein seen in the nuclei and cytoplasm) of MCF7 and U2OS cells. Recommended concentration: 10µg/ml.

**Flow Cytometry:** Flow cytometric analysis of MCF7 cells. Recommended concentration: 10µg/ml.

### Species Reactivity

**Tested:** Human, Mouse

**Expected from sequence similarity:** Human, Mouse, Rat

### Specific References

**This antibody has been successfully used in IHC on Rat:**

Toyo Ikebukuro et al.

Disulfiram Ophthalmic Solution Inhibited Macrophage Infiltration by Suppressing Macrophage Pseudopodia Formation in a Rat Corneal Alkali Burn Model

Int. J. Mol. Sci. 2023, 24(1), 735; <https://doi.org/10.3390/ijms24010735>

PMID: 0

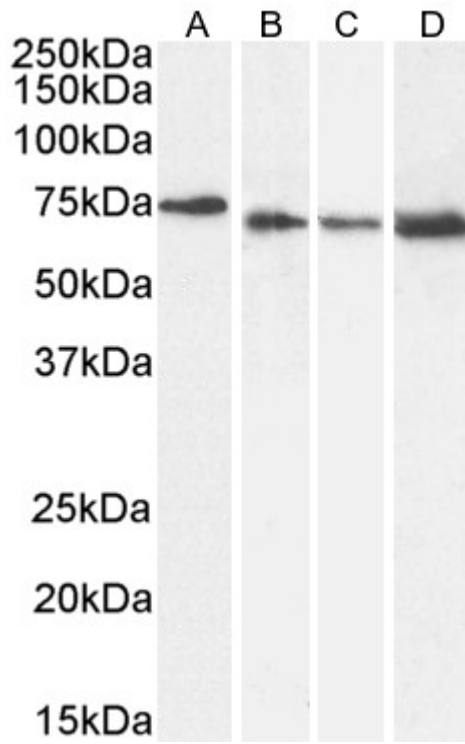
**This antibody has been successfully used in WB and IP on Human:**

Toda E, Terashima Y, Sato T, Hirose K, Kanegasaki S, Matsushima K.

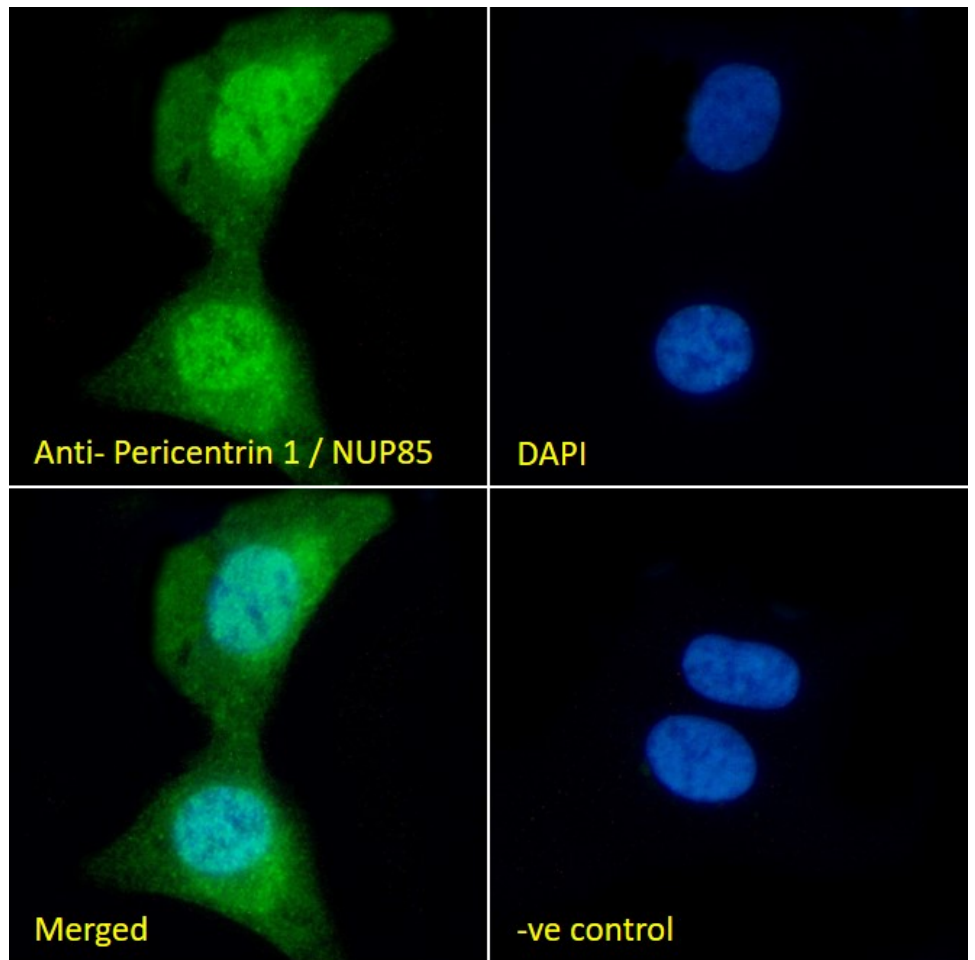
FROUNT is a common regulator of CCR2 and CCR5 signaling to control directional migration.

J Immunol. 2009 Nov 15;183(10):6387-94.

PMID: 19841162

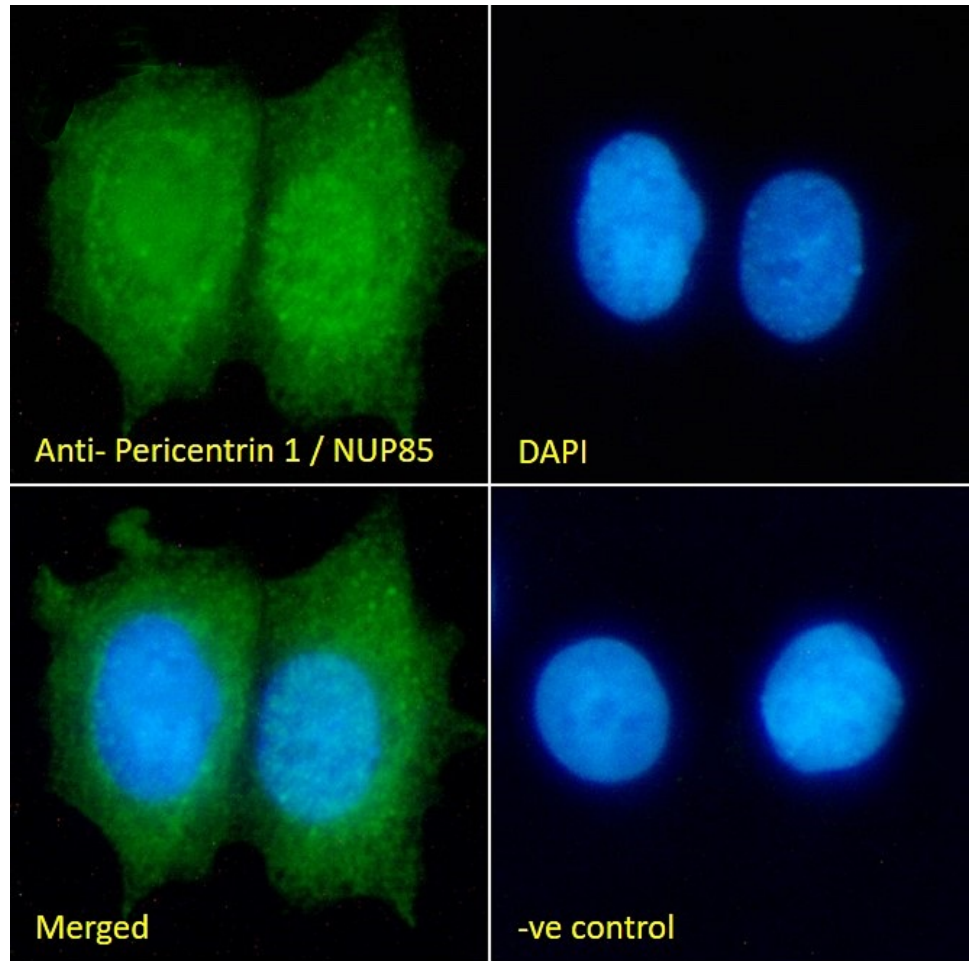


EB06201 (0.5ug/ml) staining of HeLa (A), (0.3ug/ml) NIH3T3 (B) and (1ug/ml) nuclear HeLa (C) and nuclear HEK293 (D) cell lysate (35µg protein in RIPA buffer). Detected by chemiluminescence.

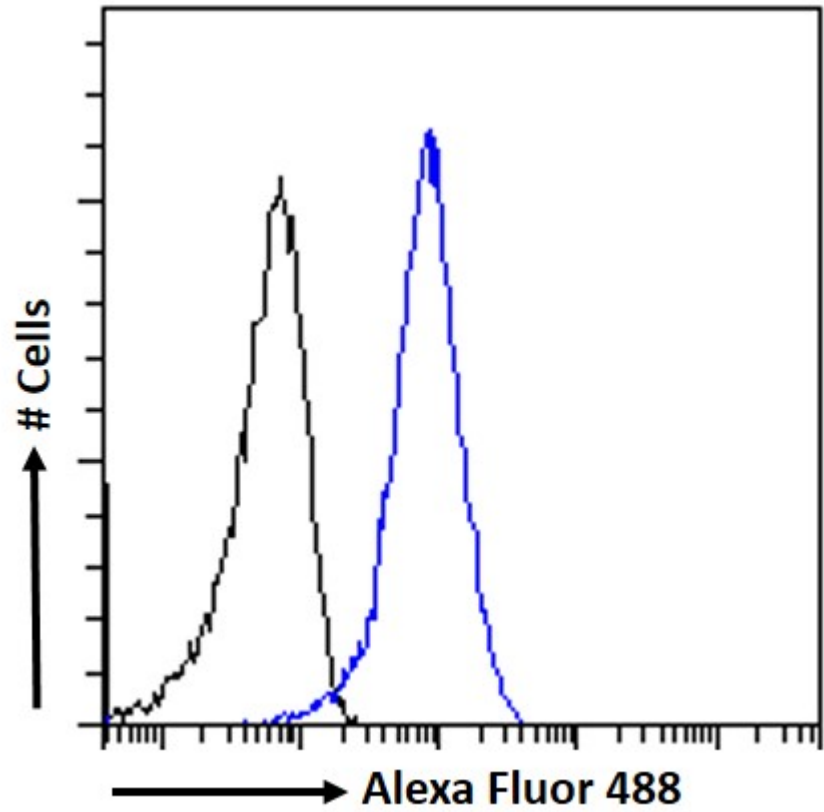


EB06201 Immunofluorescence analysis of paraformaldehyde fixed U2OS cells, permeabilized with 0.15% Triton. Primary incubation 1hr (10ug/ml) followed by Alexa Fluor 488 secondary antibody (2ug/ml), showing nuclear and

cytoplasmic staining. The nuclear stain is DAPI (blue). Negative control: Unimmunized goat IgG (10ug/ml) followed by Alexa Fluor 488 secondary antibody (2ug/ml).



EB06201 Immunofluorescence analysis of paraformaldehyde fixed MCF7 cells, permeabilized with 0.15% Triton. Primary incubation 1hr (10ug/ml) followed by Alexa Fluor 488 secondary antibody (2ug/ml), showing nuclear and cytoplasmic staining. The nuclear stain is DAPI (blue). Negative control: Unimmunized goat IgG (10ug/ml) followed by Alexa Fluor 488 secondary antibody (2ug/ml).



EB06201 Flow cytometric analysis of paraformaldehyde fixed MCF7 cells (blue line), permeabilized with 0.5% Triton. Primary incubation 1hr (10ug/ml) followed by Alexa Fluor 488 secondary antibody (1ug/ml). IgG control: Unimmunized goat IgG (black line) followed by Alexa Fluor 488 secondary antibody.