



International Office

Everest Biotech Ltd

Vector Laboratories, Inc.
6737 Mowry Ave
Newark, CA 94560
United States

Customer Service:

customerservice@vectorlabs.com

Technical Service:

technical@vectorlabs.com

Tel: +1 (800) 227-6666

www.everestbiotech.com

**Research Use Only. Not for
diagnostic or therapeutic use.**

EB06201 - Goat Anti-Pericentrin 1 / NUP85 Antibody

Size: 100µg specific antibody in 200µl



Target Protein

Principal Names: NUP85, pericentrin 1, PCNT1, PCN, PCNT, frount, nucleoporin Nup75, nucleoporin 85kDa, FLJ12549, Nup75, nucleoporin 85

Official Symbol: NUP85

Accession Number(s): NP_079120.1; NP_001290205.1; NP_001317401.1

Human GeneID(s): [79902](#)

Non-Human GeneID(s): 18541 (mouse)

Important Comments: This antibody is expected to recognise all reported isoforms.

Immunogen

Peptide with sequence C-ARAIIREGSLEGS, from the C Terminus of the protein sequence according to NP_079120.1; NP_001290205.1; NP_001317401.1.

Please note the [peptide](#) is available for sale.

Purification and Storage

Purified from goat serum by ammonium sulphate precipitation followed by antigen affinity chromatography using the immunizing peptide.

Supplied at 0.5 mg/ml in Tris saline, 0.02% sodium azide, pH7.3 with 0.5% bovine serum albumin.

Aliquot and store at -20°C. Minimize freezing and thawing.

Applications Tested

Peptide ELISA: antibody detection limit dilution 1:32000.

Western blot: Approx. 75kDa band observed in lysates of cell line HeLa and approx. 70kDa in NIH3T3 cell lysates and in nuclear lysates of cell lines HeLa and HEK293 (calculated MW of 75.0kDa according to NP_079120.1). Recommended concentration: 0.3-1µg/ml. Primary incubation 1 hour at room temperature.

Positive Control: A batch specific positive control lysate is available for this product. Please contact Sales@everestbiotech.com for availability.

Immunofluorescence: Strong expression of the protein seen in the nuclei and cytoplasm) of MCF7 and U2OS cells. Recommended concentration: 10µg/ml.

Flow Cytometry: Flow cytometric analysis of MCF7 cells. Recommended concentration: 10µg/ml.

Species Reactivity

Tested: Human, Mouse

Expected from sequence similarity: Human, Mouse, Rat

Specific References

This antibody has been successfully used in ICC on Mouse:

Yugo Okabe, Etsuko Toda, Hirokazu Urushiyama, Yuya Terashima, Shinobu Kunugi, Yusuke Kajimoto, Mika Terasaki, Kouji Matsushima, Akira Saito, Yasuhiro Yamauchi, Takahide Nagase, Akira Shimizu, Yasuhiro Terasaki

Antifibrotic effect of disulfiram on bleomycin-induced lung fibrosis in mice and its impact on macrophage infiltration

Sci Rep. 2024 Oct 10;14(1):23653.

PMID: 39384840

This antibody has been successfully used in IHC on Rat:

Toyo Ikebukuro et al.

Disulfiram Ophthalmic Solution Inhibited Macrophage Infiltration by Suppressing Macrophage Pseudopodia Formation in a Rat Corneal Alkali Burn Model

Int. J. Mol. Sci. 2023, 24(1), 735; <https://doi.org/10.3390/ijms24010735>

PMID: 2

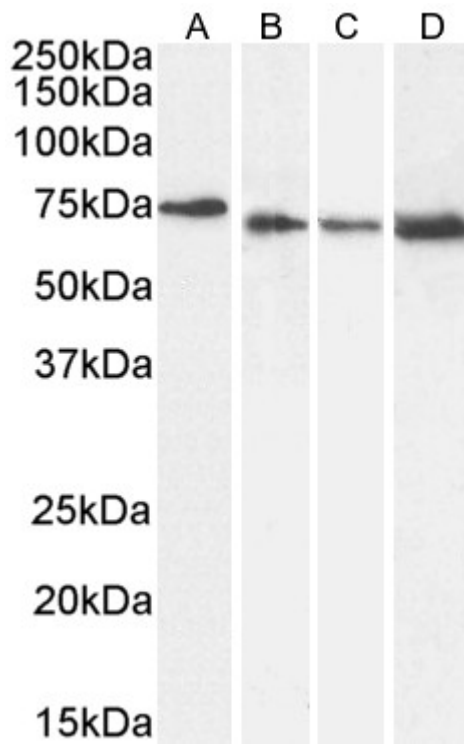
This antibody has been successfully used in WB and IP on Human:

Toda E, Terashima Y, Sato T, Hirose K, Kanegasaki S, Matsushima K.

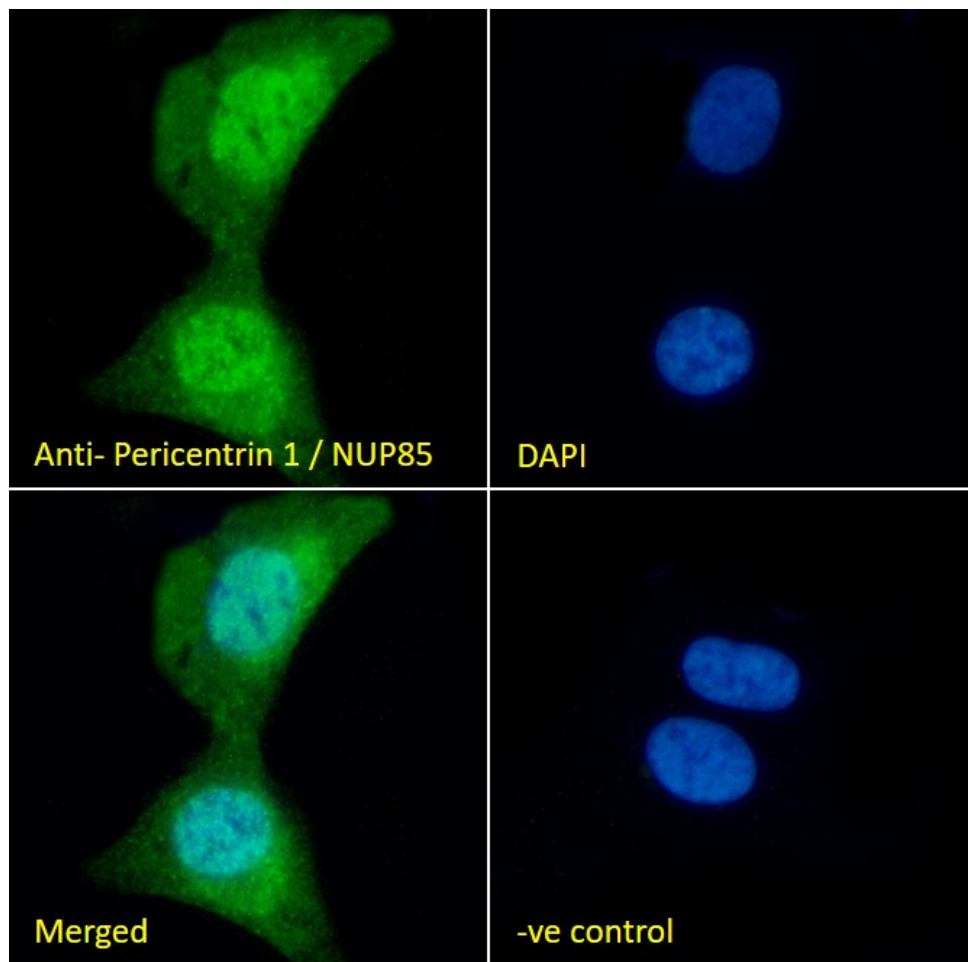
FROUNT is a common regulator of CCR2 and CCR5 signaling to control directional migration.

J Immunol. 2009 Nov 15;183(10):6387-94.

PMID: 19841162

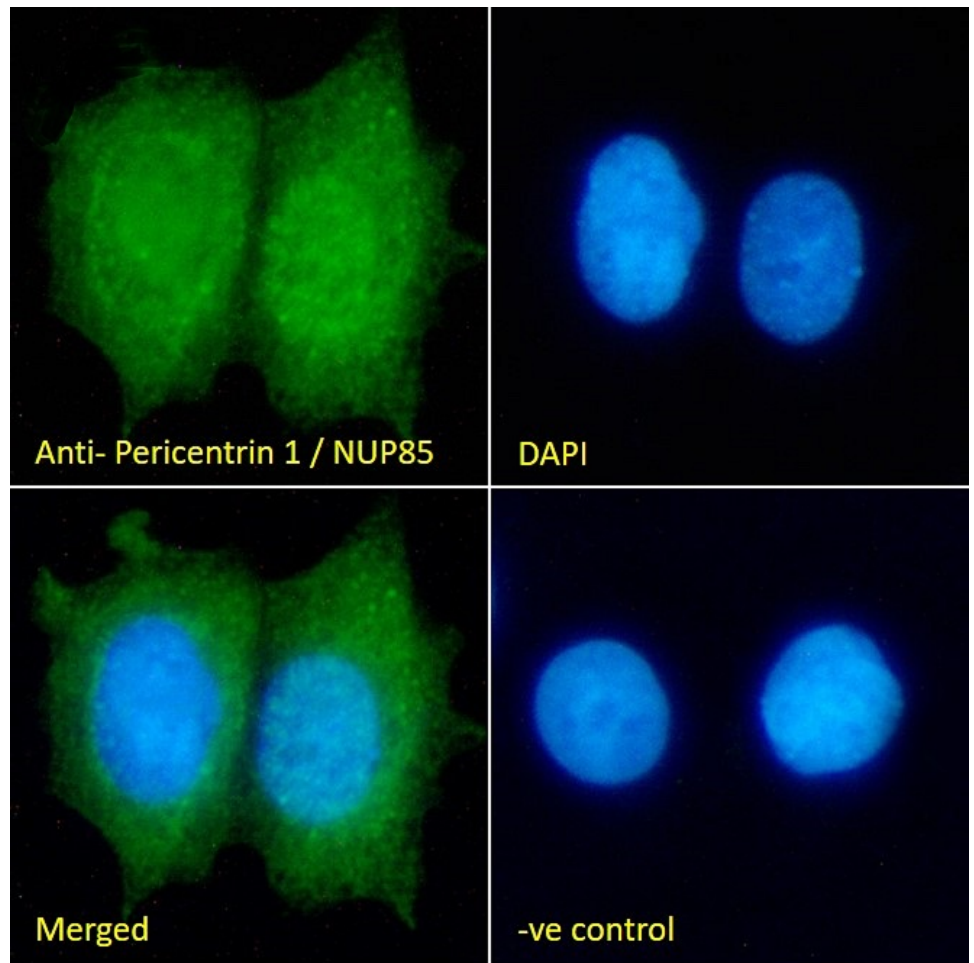


EB06201 (0.5ug/ml) staining of HeLa (A), (0.3ug/ml) NIH3T3 (B) and (1ug/ml) nuclear HeLa (C) and nuclear HEK293 (D) cell lysate (35µg protein in RIPA buffer). Detected by chemiluminescence.

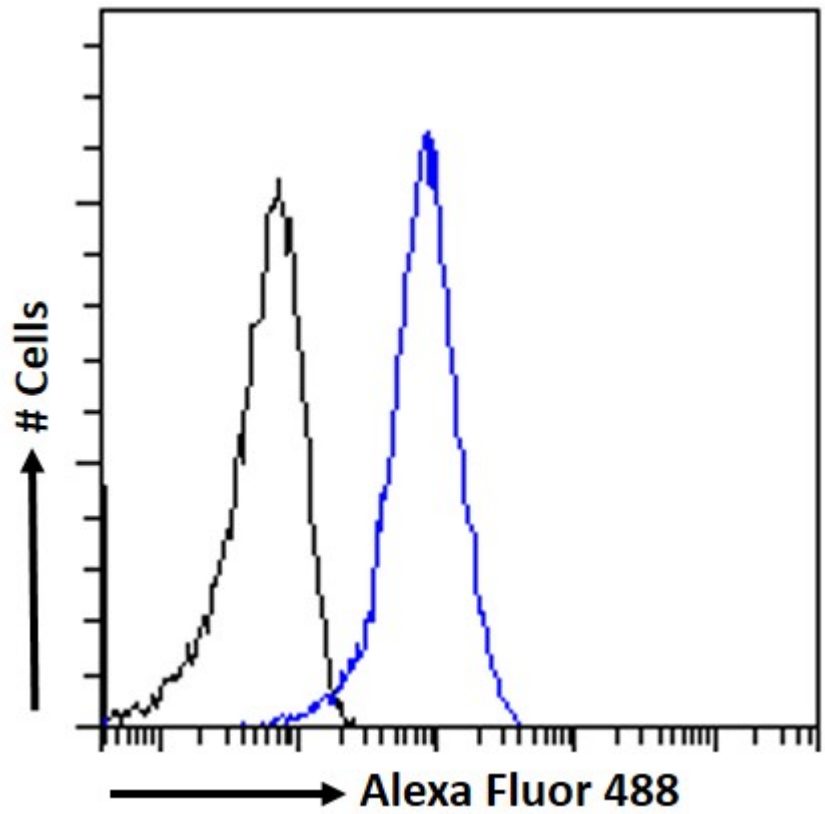


EB06201 Immunofluorescence analysis of paraformaldehyde fixed U2OS cells, permeabilized with 0.15% Triton. Primary incubation 1hr (10ug/ml) followed by Alexa Fluor 488 secondary antibody (2ug/ml), showing nuclear and

cytoplasmic staining. The nuclear stain is DAPI (blue). Negative control: Unimmunized goat IgG (10ug/ml) followed by Alexa Fluor 488 secondary antibody (2ug/ml).



EB06201 Immunofluorescence analysis of paraformaldehyde fixed MCF7 cells, permeabilized with 0.15% Triton. Primary incubation 1hr (10ug/ml) followed by Alexa Fluor 488 secondary antibody (2ug/ml), showing nuclear and cytoplasmic staining. The nuclear stain is DAPI (blue). Negative control: Unimmunized goat IgG (10ug/ml) followed by Alexa Fluor 488 secondary antibody (2ug/ml).



EB06201 Flow cytometric analysis of paraformaldehyde fixed MCF7 cells (blue line), permeabilized with 0.5% Triton. Primary incubation 1hr (10ug/ml) followed by Alexa Fluor 488 secondary antibody (1ug/ml). IgG control: Unimmunized goat IgG (black line) followed by Alexa Fluor 488 secondary antibody.