



UK Office

Everest Biotech Ltd

Cherwell Innovation Centre
77 Heyford Park
Upper Heyford
Oxfordshire
OX25 5HD
UK

Enquiries:

info@everestbiotech.com

Sales:

sales@everestbiotech.com

Tech support:

support@everestbiotech.com

Tel: +44 (0)1869 238326

www.everestbiotech.com

**Research Use Only. Not for
diagnostic or therapeutic use.**

EB07727 - Goat Anti-Perilipin 1 (internal) Antibody

Size: 100µg specific antibody in 200µl

Target Protein

Principal Names: PLIN, perilipin, PERI, lipid droplet-associated protein, PLIN1, Perilipin 1

Official Symbol: PLIN1

Accession Number(s): NP_002657.3; NP_001138783.1 NP_001138783.1

Human GeneID(s): [5346](#)

Immunogen

Peptide with sequence C-PREKPKRRVSDS, from the internal region (near the C Terminus) of the protein sequence according to NP_002657.3; NP_001138783.1 NP_001138783.1.

Please note the [peptide](#) is available for sale.

Purification and Storage

Purified from goat serum by ammonium sulphate precipitation followed by antigen affinity chromatography using the immunizing peptide.

Supplied at 0.5 mg/ml in Tris saline, 0.02% sodium azide, pH7.3 with 0.5% bovine serum albumin.

Aliquot and store at -20°C. Minimize freezing and thawing.

Applications Tested

Peptide ELISA: antibody detection limit dilution 1:8000.

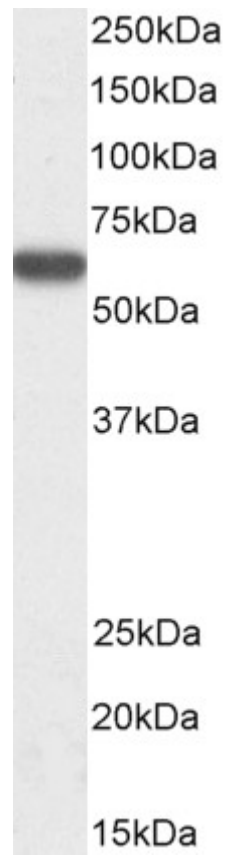
Western blot: Approx 60kDa band observed in Human Adipose lysates (calculated MW of 56.0kDa according to NP_002657.2). Recommended concentration: 1-3µg/ml. Primary incubation 1 hour at room temperature.

This product is not suitable for IF.

Species Reactivity

Tested: Human

Expected from sequence similarity: Human



EB07727 (1 μ g/ml) staining of Human Adipose tissue lysate (35 μ g protein in RIPA buffer). Detected by chemiluminescence.