



## UK Office

### Everest Biotech Ltd

Cherwell Innovation Centre  
77 Heyford Park  
Upper Heyford  
Oxfordshire  
OX25 5HD  
UK

Enquiries:

[info@everestbiotech.com](mailto:info@everestbiotech.com)

Sales:

[sales@everestbiotech.com](mailto:sales@everestbiotech.com)

Tech support:

[support@everestbiotech.com](mailto:support@everestbiotech.com)

Tel: +44 (0)1869 238326

[www.everestbiotech.com](http://www.everestbiotech.com)

**Research Use Only. Not for  
diagnostic or therapeutic use.**

## EB11811 - Goat Anti-periostin Antibody

Size: 100µg specific antibody in 200µl



### Target Protein

**Principal Names:** MGC119510, MGC119511, OSF2, OSF-2, osteoblast specific factor 2 (fascin I-like), osteoblast-specific factor 2, OTTHUMP00000018268, OTTHUMP00000018269, OTTHUMP00000018270, OTTHUMP00000018271, PDLPOSTN, periodontal ligament-specific periostin, periostin, periostin isoform thy2, periostin isoform thy4, periostin isoform thy6, periostin isoform thy8, periostin, osteoblast specific factor, PN, POSTN, RP11-412K4.1

**Official Symbol:** POSTN

**Accession Number(s):** NP\_006466.2; NP\_001129406.1; NP\_001129407.1; NP\_001129408.1

**Human GeneID(s):** [10631](#)

**Important Comments:** This antibody is expected to recognize all reported isoforms (NP\_006466.2; NP\_001129406.1; NP\_001129407.1; NP\_001129408.1).

### Immunogen

Peptide with sequence C-RKLQANKKVQGSRR, from the C Terminus of the protein sequence according to NP\_006466.2; NP\_001129406.1; NP\_001129407.1; NP\_001129408.1.

Please note the [peptide](#) is available for sale.

### Purification and Storage

Purified from goat serum by ammonium sulphate precipitation followed by antigen affinity chromatography using the immunizing peptide.

Supplied at 0.5 mg/ml in Tris saline, 0.02% sodium azide, pH7.3 with 0.5% bovine serum albumin.

Aliquot and store at -20°C. Minimize freezing and thawing.

### Applications Tested

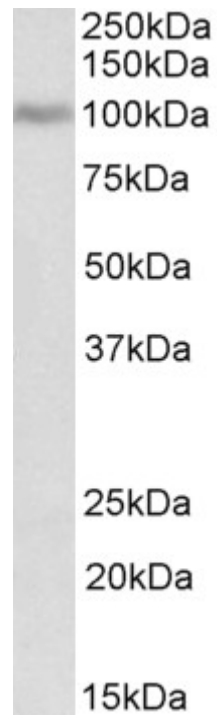
**Peptide ELISA:** antibody detection limit dilution 1:16000.

**Western blot:** Approx 100kDa band observed in lysates of cell line MCF7 (calculated MW of 93.3kDa according to NP\_006466.2). Recommended concentration: 1-3µg/ml.

### Species Reactivity

**Tested:** Human

**Expected from sequence similarity:** Human



EB11811 (2 $\mu$ g/ml) staining of MCF7 lysate (35 $\mu$ g protein in RIPA buffer). Primary incubation was 1 hour.  
Detected by chemiluminescence.