



## International Office

### Everest Biotech Ltd

Vector Laboratories, Inc.  
6737 Mowry Ave  
Newark, CA 94560  
United States

Customer Service:

[customerservice@vectorlabs.com](mailto:customerservice@vectorlabs.com)

Technical Service:

[technical@vectorlabs.com](mailto:technical@vectorlabs.com)

Tel: +1 (800) 227-6666

[www.everestbiotech.com](http://www.everestbiotech.com)

**Research Use Only. Not for  
diagnostic or therapeutic use.**

## EB12403 - Goat Anti-peroxiredoxin 6 (aa170-180) Antibody

Size: 100µg specific antibody in 200µl



### Target Protein

**Principal Names:** PRDX6, peroxiredoxin 6, 1-Cys, AOP2, NSGPx, PRX, aiPLA2, p29, 1-Cys PRX, 1-Cys peroxiredoxin, 24 kDa protein, acidic calcium-independent phospholipase A2, antioxidant protein 2, liver 2D page spot 40, non-selenium glutathione peroxidase, peroxiredoxin-6

**Official Symbol:** PRDX6

**Accession Number(s):** NP\_004896.1

**Human GeneID(s):** [9588](#)

### Immunogen

Peptide with sequence C-TAEKRVATPVD, from the internal region of the protein sequence according to NP\_004896.1.

Please note the [peptide](#) is available for sale.

### Purification and Storage

Purified from goat serum by ammonium sulphate precipitation followed by antigen affinity chromatography using the immunizing peptide.

Supplied at 0.5 mg/ml in Tris saline, 0.02% sodium azide, pH7.3 with 0.5% bovine serum albumin.

Aliquot and store at -20°C. Minimize freezing and thawing.

### Applications Tested

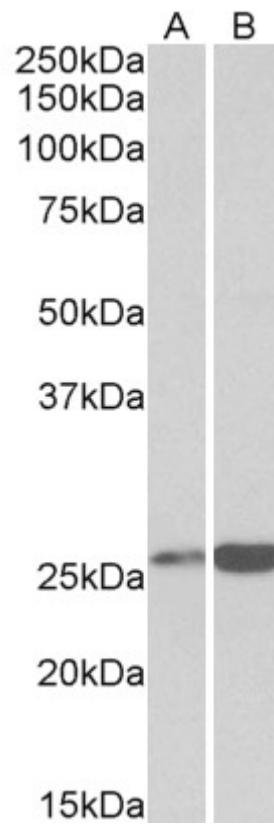
**Peptide ELISA:** antibody detection limit dilution 1:128000.

**Western blot:** Approx 26kDa band observed in Human and Pig Heart, Kidney and Liver lysates (calculated MW of 25.0kDa according to NP\_004896.1). Recommended concentration: 0.3-1µg/ml.

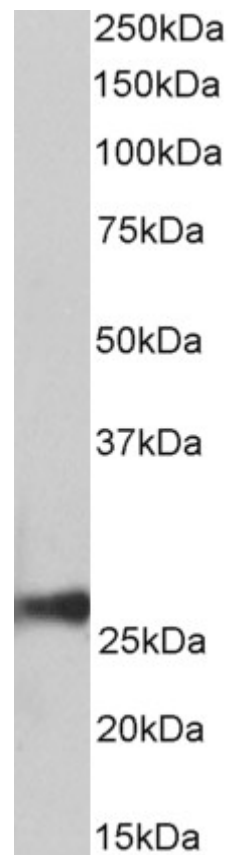
### Species Reactivity

**Tested:** Human, Pig

**Expected from sequence similarity:** Human, Dog, Pig, Cow



EB12403 (0.3 $\mu$ g/ml) staining of Human Heart (A) and Liver (B) lysates (35 $\mu$ g protein in RIPA buffer). Primary incubation was 1 hour. Detected by chemiluminescence.



EB12403 (0.1 $\mu$ g/ml) staining of Pig Liver lysate (35 $\mu$ g protein in RIPA buffer). Primary incubation was 1 hour. Detected by chemiluminescence.