



International Office

Everest Biotech Ltd

Vector Laboratories, Inc.
6737 Mowry Ave
Newark, CA 94560
United States

Customer Service:

customerservice@vectorlabs.com

Technical Service:

technical@vectorlabs.com

Tel: +1 (800) 227-6666

www.everestbiotech.com

**Research Use Only. Not for
diagnostic or therapeutic use.**

EB09646 - Goat Anti-PFKFB2 Antibody

Size: 100µg specific antibody in 200µl



Target Protein

Principal Names: PFKFB2, 6-phosphofructo-2-kinase/fructose-2,6-biphosphatase 2, DKFZp781D2217, MGC138308, MGC138310, PFK-2/FBPase-2, 6-phosphofructo-2-kinase/fructose-2,6-bisphosphatase 2, 6PF-2-K/Fru-2,6-P2ASE heart-type isozyme, OTTHUMP00000034285, OTTHUMP00000034286, PFKFB, cardiac, fructose-2,6-bisphosphatase, cardiac isozyme

Official Symbol: PFKFB2

Accession Number(s): NP_006203.2; NP_001018063.1

Human GeneID(s): [5208](#)

Important Comments: This antibody is expected to recognize both reported isoforms (NP_006203.2; NP_001018063.1).

Immunogen

Peptide with sequence SEQNNNSYETKTP-C, from the N Terminus of the protein sequence according to NP_006203.2; NP_001018063.1.

Please note the [peptide](#) is available for sale.

Purification and Storage

Purified from goat serum by ammonium sulphate precipitation followed by antigen affinity chromatography using the immunizing peptide.

Supplied at 0.5 mg/ml in Tris saline, 0.02% sodium azide, pH7.3 with 0.5% bovine serum albumin.

Aliquot and store at -20°C. Minimize freezing and thawing.

Applications Tested

Peptide ELISA: antibody detection limit dilution 1:16000.

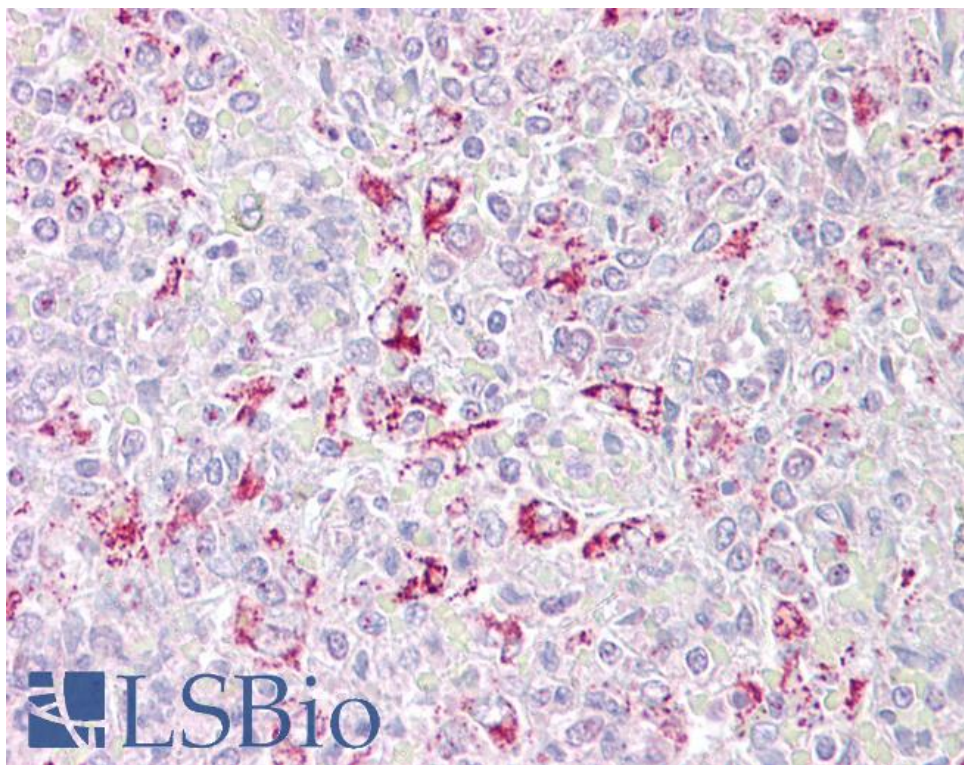
Western blot: Preliminary experiments gave an approx 75Da band in Human Heart lysates after 1µg/ml antibody staining. Please note that currently we cannot find an explanation in the literature for the band we observe given the calculated size of 58.5kDa according to NP_006203.2 and 54.4kDa according to NP_001018063.1. The 75kDa band was successfully blocked by incubation with the immunizing peptide.

IHC: Paraffin embedded Human Spleen. Recommended concentration: 2.5µg/ml.

Species Reactivity

Tested: Human

Expected from sequence similarity: Human, Dog, Cow



EB09646 (2.5µg/ml) staining of paraffin embedded Human Spleen. Steamed antigen retrieval with citrate buffer pH 6, AP-staining.