



International Office

Everest Biotech Ltd

Vector Laboratories, Inc.
6737 Mowry Ave
Newark, CA 94560
United States

Customer Service:

customerservice@vectorlabs.com

Technical Service:

technical@vectorlabs.com

Tel: +1 (800) 227-6666

www.everestbiotech.com

**Research Use Only. Not for
diagnostic or therapeutic use.**

EB12390 - Goat Anti-PGK1 Antibody

Size: 100µg specific antibody in 200µl



Target Protein

Principal Names: PGK1, phosphoglycerate kinase 1, MIG10, PGKA, PRP 2, cell migration-inducing gene 10 protein, primer recognition protein 2

Official Symbol: PGK1

Accession Number(s): NP_000282.1

Human GeneID(s): [5230](#)

Immunogen

Peptide with sequence C-SKKYAEAVTRAKQ, from the internal region of the protein sequence according to NP_000282.1.

Please note the [peptide](#) is available for sale.

Purification and Storage

Purified from goat serum by ammonium sulphate precipitation followed by antigen affinity chromatography using the immunizing peptide.

Supplied at 0.5 mg/ml in Tris saline, 0.02% sodium azide, pH7.3 with 0.5% bovine serum albumin.

Aliquot and store at -20°C. Minimize freezing and thawing.

Applications Tested

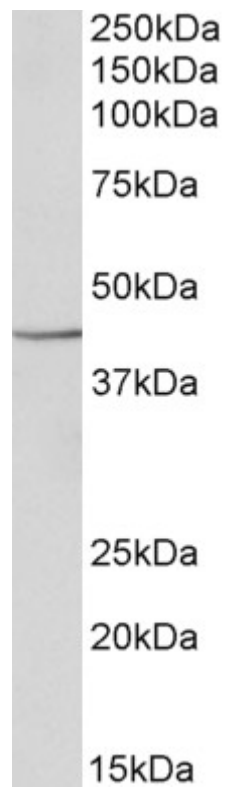
Peptide ELISA: antibody detection limit dilution 1:128000.

Western blot: Approx 45kDa band observed in lysates of cell lines A432, HEK293, HeLa and HepG2 (calculated MW of 44.6kDa according to NP_000282.1). Recommended concentration: 0.1-0.3µg/ml.

Species Reactivity

Tested: Human

Expected from sequence similarity: Human



EB12390 (0.1 μ g/ml) staining of HeLa lysate (35 μ g protein in RIPA buffer). Primary incubation was 1 hour. Detected by chemiluminescence.