



UK Office

Everest Biotech Ltd

Cherwell Innovation Centre
77 Heyford Park
Upper Heyford
Oxfordshire
OX25 5HD
UK

Enquiries:

info@everestbiotech.com

Sales:

sales@everestbiotech.com

Tech support:

support@everestbiotech.com

Tel: +44 (0)1869 238326

www.everestbiotech.com

**Research Use Only. Not for
diagnostic or therapeutic use.**

EB05430 - Goat Anti-PHEMX / TSPAN32 Antibody

Size: 100µg specific antibody in 200µl



Target Protein

Principal Names: TSPAN32, PHEMX, tetraspanin 32, MGC22455, PHMX, TSSC6, pan-hematopoietic expression, pan-hematopoietic expression protein, tetraspanin, tumor-suppressing STF cDNA 6, tumor-suppressing subchromosomal transferable fragment cDNA 6, tumor-suppressing subtransferable candidate 6, ART1, FLJ17158, FLJ97586, MGC22455

Official Symbol: TSPAN32

Accession Number(s): NP_620591.3

Human GeneID(s): [10077](#)

Immunogen

Peptide with sequence GGLSGCPERGLSD, from the C Terminus of the protein sequence according to NP_620591.3.

Please note the [peptide](#) is available for sale.

Purification and Storage

Purified from goat serum by ammonium sulphate precipitation followed by antigen affinity chromatography using the immunizing peptide.

Supplied at 0.5 mg/ml in Tris saline, 0.02% sodium azide, pH7.3 with 0.5% bovine serum albumin.

Aliquot and store at -20°C. Minimize freezing and thawing.

Applications Tested

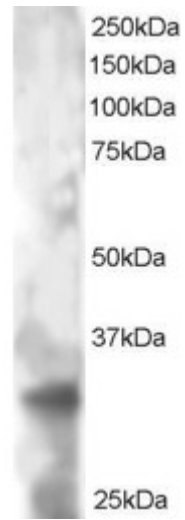
Peptide ELISA: antibody detection limit dilution 1:2000.

Western blot: Approx 33-35kDa band seen in HeLa lysate. Recommended for use at 1-3µg/ml.

Species Reactivity

Tested: Human

Expected from sequence similarity: Human



EB05430 staining (2 μ g/ml) of HeLa lysate (RIPA buffer, 30 μ g total protein per lane). Primary incubated for 1 hour. Detected by western blot using chemiluminescence.