



UK Office

Everest Biotech Ltd

Cherwell Innovation Centre
77 Heyford Park
Upper Heyford
Oxfordshire
OX25 5HD
UK

Enquiries:

info@everestbiotech.com

Sales:

sales@everestbiotech.com

Tech support:

support@everestbiotech.com

Tel: +44 (0)1869 238326

Fax: +44 (0)1869 238327

US Office

Everest Biotech c/o Abcore

405 Maple Street, Suite A106
Ramona,
CA 92065
USA

Inquiries:

info@everestbiotech.com

Sales:

usasales@everestbiotech.com

Tech support:

support@everestbiotech.com

Tel: 888-320-4628 (toll-free)

Fax: 888-841-9041

www.everestbiotech.com

**Research Use Only. Not for
diagnostic or therapeutic use.**

EB08585 - Goat Anti-PHF11 Antibody

Size: 100µg specific antibody in 200µl



Target Protein

Principal Names: PHF11, PHD finger protein 11, APY, BCAP, IGEL, IGER, IGHER, NY-REN-34, NYREN34, RP11-185C18.3, IgE responsiveness (atopic), NY-REN-34 antigen

Official Symbol: PHF11

Accession Number(s): NP_001035533.1; NP_001035534.1

Human GeneID(s): [51131](#)

Important Comments: This antibody is expected to recognize both reported isoforms (NP_001035533.1; NP_001035534.1).

Immunogen

Peptide with sequence C-KIHASQQRWQQLKE, from the internal region of the protein sequence according to NP_001035533.1; NP_001035534.1.

Please note the [peptide](#) is available for sale.

Purification and Storage

Purified from goat serum by ammonium sulphate precipitation followed by antigen affinity chromatography using the immunizing peptide.

Supplied at 0.5 mg/ml in Tris saline, 0.02% sodium azide, pH7.3 with 0.5% bovine serum albumin.

Aliquot and store at -20°C. Minimize freezing and thawing.

Applications Tested

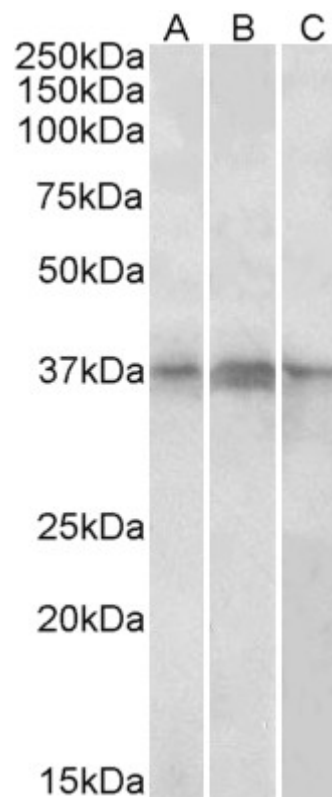
Peptide ELISA: antibody detection limit dilution 1:16000.

Western blot: Approx 37kDa band observed in nuclear lysates of cell lines Daudi, Jurkat and Jurkat (calculated MW of 37.6kDa according to NP_001035533.1). Recommended concentration: 1-3µg/ml.

Species Reactivity

Tested: Human

Expected from sequence similarity: Human



EB08585 (1 μ g/ml) staining of Daudi, (A) Jurkat (B) and Jurkat nuclear (C) lysates (35 μ g protein in RIPA buffer).
Primary incubation was 1 hour. Detected by chemiluminescence