



UK Office

Everest Biotech Ltd

Cherwell Innovation Centre
77 Heyford Park
Upper Heyford
Oxfordshire
OX25 5HD
UK

Enquiries:

info@everestbiotech.com

Sales:

sales@everestbiotech.com

Tech support:

support@everestbiotech.com

Tel: +44 (0)1869 238326

Fax: +44 (0)1869 238327

US Office

Everest Biotech c/o Abcore

405 Maple Street, Suite A106
Ramona,
CA 92065
USA

Inquiries:

info@everestbiotech.com

Sales:

usasales@everestbiotech.com

Tech support:

support@everestbiotech.com

Tel: 888-320-4628 (toll-free)

Fax: 888-841-9041

www.everestbiotech.com

**Research Use Only. Not for
diagnostic or therapeutic use.**

EB03004 - Goat Anti-phospho-CD244 / 2B4 Antibody

Size: 100µg specific antibody in 200µl



Target Protein

Principal Names: CD244, CD244 molecule, natural killer cell receptor 2B4, 2B4, NAIL, NKR2B4, Nmrk, SLAMF4, CD244 natural killer cell receptor 2B4, NK cell activation inducing ligand NAIL, natural killer cell receptor 2B4

Official Symbol: CD244

Accession Number(s): NP_057466.1

Human GeneID(s): [51744](#)

Immunogen

Peptide with sequence C-EFLTIpYEDVKD, from the internal region of the protein sequence according to NP_057466.1.

Please note the [peptide](#) is available for sale.

Purification and Storage

Purified from goat serum by ammonium sulphate precipitation followed by antigen affinity chromatography using the immunizing peptide.

Supplied at 0.5 mg/ml in Tris saline, 0.02% sodium azide, pH7.3 with 0.5% bovine serum albumin.

Aliquot and store at -20°C. Minimize freezing and thawing.

Applications Tested

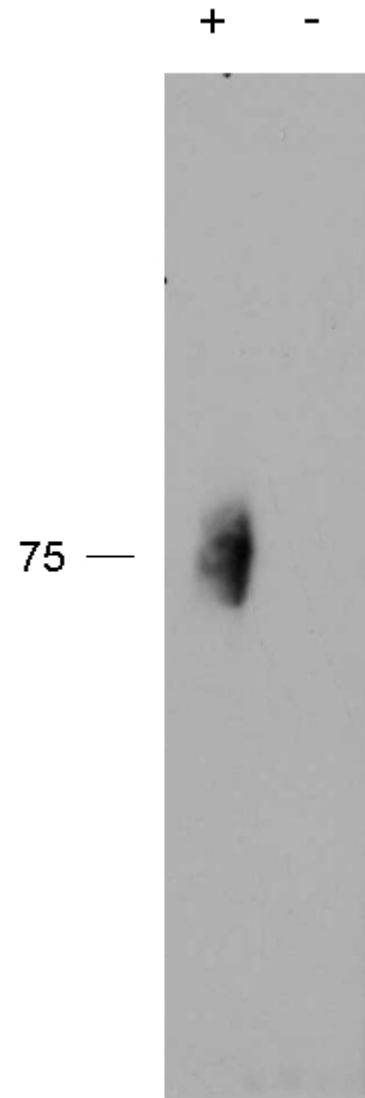
Peptide ELISA: antibody detection limit dilution 1:64000.

Immunoprecipitation: Approx 75kDa band observed in Human Natural Killer (NK) cell lysates after with immunoprecipitation mouse monoclonal antibody C1.7 coupled to Protein G agarose (calculated MW of 41.1kDa according to NP_057466.1). We do note that CD244 is a glycoprotein which makes a higher size band to be expected.
Recommended concentration: 1-3µg/ml.

Species Reactivity

Tested: Human

Expected from sequence similarity: Human



EB03004 (2µg/ml) staining of IP from a lysate of Human Natural Killer cells with (+) or without (-) pervanadate treatment of the cells. Primary incubation was 1 hour. Detected by chemiluminescence. Data kindly provided by Dr Nicholas G Clarkson, Sir William Dunn School of Pathology, Oxford, UK