



UK Office

Everest Biotech Ltd
Cherwell Innovation Centre
77 Heyford Park
Upper Heyford
Oxfordshire
OX25 5HD
UK

Enquiries:

info@everestbiotech.com

Sales:

sales@everestbiotech.com

Tech support:

support@everestbiotech.com

Tel: +44 (0)1869 238326

www.everestbiotech.com

**Research Use Only. Not for
diagnostic or therapeutic use.**

EB10221 - Goat Anti-Phospholamban / PLN Antibody

Size: 100µg specific antibody in 200µl



Target Protein

Principal Names: cardiac phospholamban, CMD1P, phospholamban, PLB, PLN

Official Symbol: PLN

Accession Number(s): NP_002658.1

Human GeneID(s): [5350](#)

Non-Human GeneID(s): 64672 (rat)

Immunogen

Peptide with sequence KVQYLTRSAIRR-C, from the N Terminus of the protein sequence according to NP_002658.1.

Please note the [peptide](#) is available for sale.

Purification and Storage

Purified from goat serum by ammonium sulphate precipitation followed by antigen affinity chromatography using the immunizing peptide.

Supplied at 0.5 mg/ml in Tris saline, 0.02% sodium azide, pH7.3 with 0.5% bovine serum albumin.

Aliquot and store at -20°C. Minimize freezing and thawing.

Applications Tested

Peptide ELISA: antibody detection limit dilution 1:8000.

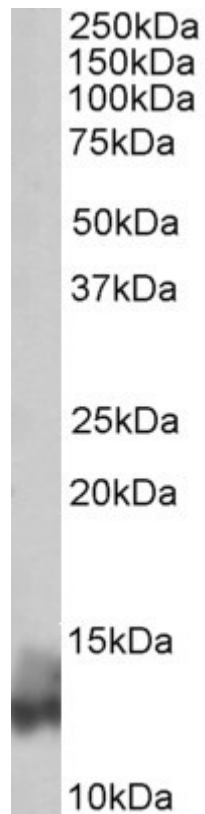
Western blot: Approx 13kDa band observed in Human and Rat Heart lysates (calculated MW of 6.11kDa according to NP_002658.1). Recommended concentration: 0.01-0.03µg/ml. Primary incubation was 1 hour.

IHC: Paraffin embedded Human Heart. Recommended concentration: 3.75µg/ml.

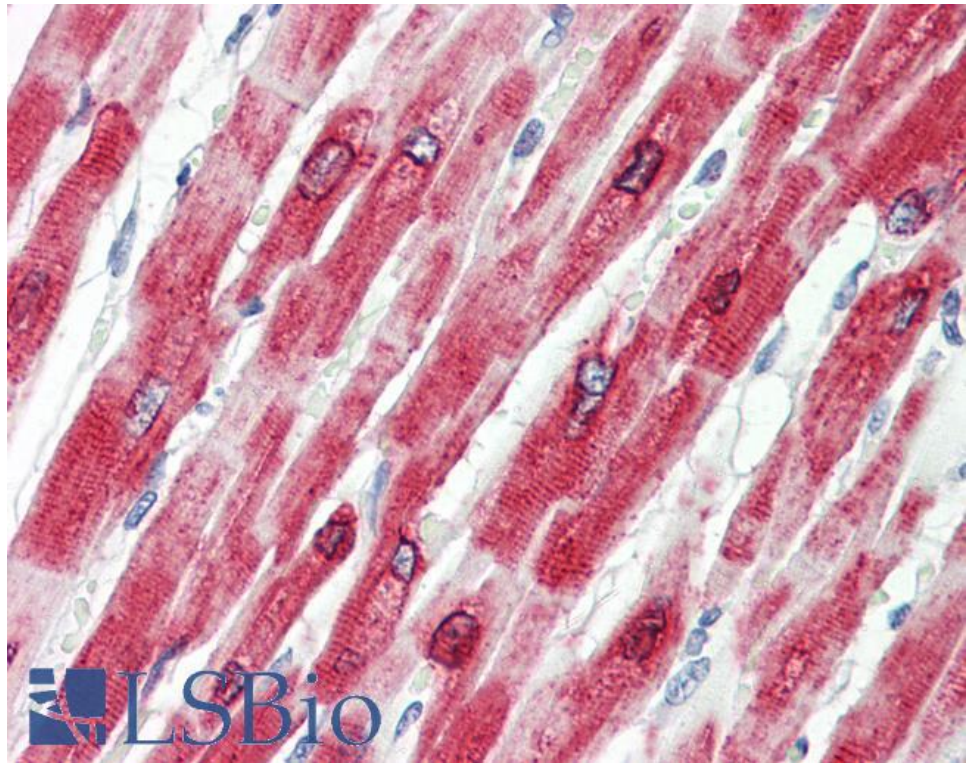
Species Reactivity

Tested: Human, Rat

Expected from sequence similarity: Human, Rat, Pig, Cow



EB10221 (0.03 μ g/ml) staining of Human Heart lysate (35 μ g protein in RIPA buffer). Detected by chemiluminescence.



EB10221 (3.75 μ g/ml) staining of paraffin embedded Human Heart. Steamed antigen retrieval with citrate buffer pH 6, AP-staining.