



## International Office

### Everest Biotech Ltd

Vector Laboratories, Inc.  
6737 Mowry Ave  
Newark, CA 94560  
United States

Customer Service:

[customerservice@vectorlabs.com](mailto:customerservice@vectorlabs.com)

Technical Service:

[technical@vectorlabs.com](mailto:technical@vectorlabs.com)

Tel: +1 (800) 227-6666

[www.everestbiotech.com](http://www.everestbiotech.com)

**Research Use Only. Not for  
diagnostic or therapeutic use.**

## EB11590 - Goat Anti-PHOX2A (aa165-179) Antibody

Size: 100µg specific antibody in 200µl



### Target Protein

**Principal Names:** aristaless homeobox homolog, aristaless homeobox protein homolog, ARIX, arix homeodomain protein, ARIX1 homeodomain protein, CFEOM2, FEOM2, MGC52227, NCAM2, OTTHUMP00000237214, paired mesoderm homeobox protein 2A, paired-like homeobox 2a, PHOX2A, PMX2A

**Official Symbol:** PHOX2A

**Accession Number(s):** NP\_005160.2

**Human GeneID(s):** [401](#)

### Immunogen

Peptide with sequence KGEARCSSEDDDSKE, from the internal region of the protein sequence according to NP\_005160.2.

Please note the [peptide](#) is available for sale.

### Purification and Storage

Purified from goat serum by ammonium sulphate precipitation followed by antigen affinity chromatography using the immunizing peptide.

Supplied at 0.5 mg/ml in Tris saline, 0.02% sodium azide, pH7.3 with 0.5% bovine serum albumin.

Aliquot and store at -20°C. Minimize freezing and thawing.

### Applications Tested

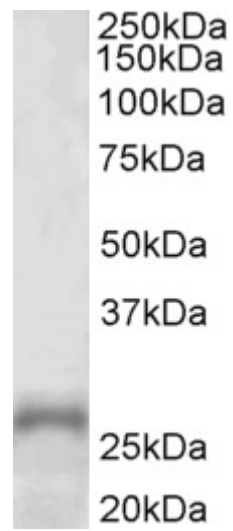
**Peptide ELISA:** antibody detection limit dilution 1:32000.

**Western blot:** Approx 26kDa band observed in Human Adrenal Gland and Uterus lysates (calculated MW of 29.7kDa according to NP\_005160.2). Recommended concentration: 1-3µg/ml.

### Species Reactivity

**Tested:** Human

**Expected from sequence similarity:** Human, Dog, Pig, Cow



EB11590 (1 $\mu$ g/ml) staining of Human Adrenal Gland lysate (35 $\mu$ g protein in RIPA buffer). Primary incubation was 1 hour. Detected by chemiluminescence.