



International Office

Everest Biotech Ltd

Vector Laboratories, Inc.
6737 Mowry Ave
Newark, CA 94560
United States

Customer Service:

customerservice@vectorlabs.com

Technical Service:

technical@vectorlabs.com

Tel: +1 (800) 227-6666

www.everestbiotech.com

**Research Use Only. Not for
diagnostic or therapeutic use.**

EB11365 - Goat Anti-PI15 (aa128-141) Antibody

Size: 100µg specific antibody in 200µl



Target Protein

Principal Names: 25 kDa trypsin inhibitor, CRISP8, CRISP-8, cysteine-rich secretory protein 8, DKFZp686F0366, P24TI, P25TI, peptidase inhibitor 15, PI-15, protease inhibitor 15, sugarCrisp, PI15

Official Symbol: PI15

Accession Number(s): NP_056970.1

Human GeneID(s): [51050](#)

Non-Human GeneID(s): 94227 (mouse), 301489 (rat)

Immunogen

Peptide with sequence C-RTGRYRSILQLVKP, from the internal region of the protein sequence according to NP_056970.1.

Please note the [peptide](#) is available for sale.

Purification and Storage

Purified from goat serum by ammonium sulphate precipitation followed by antigen affinity chromatography using the immunizing peptide.

Supplied at 0.5 mg/ml in Tris saline, 0.02% sodium azide, pH7.3 with 0.5% bovine serum albumin.

Aliquot and store at -20°C. Minimize freezing and thawing.

Applications Tested

Peptide ELISA: antibody detection limit dilution 1:1000.

Western blot: Approx 33kDa band observed in lysates of cell line HeLa (calculated MW of 29.1kDa according to NP_056970.1). Recommended concentration: 0.3-1µg/ml.

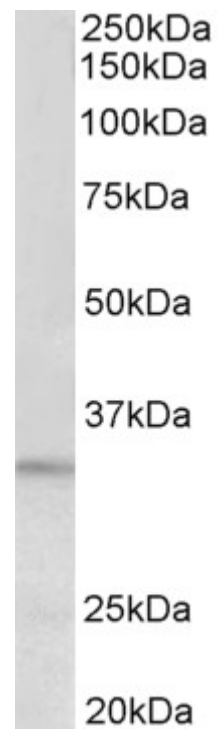
Preliminary testing was unsuccessful on Mouse and Rat Brain for this particular batch.

IHC: Paraffin embedded Human Skeletal Muscle. Recommended concentration: 5µg/ml.

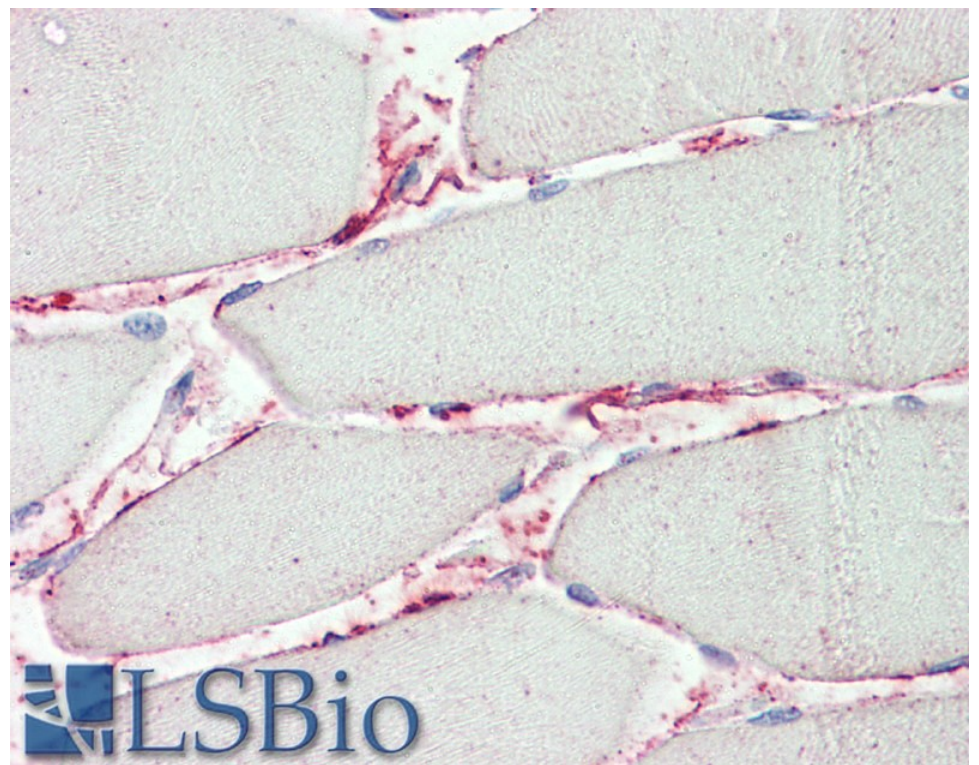
Species Reactivity

Tested: Human

Expected from sequence similarity: Human, Mouse, Rat, Dog, Pig, Cow



EB11365 (0.3 μ g/ml) staining of HeLa lysate (35 μ g protein in RIPA buffer). Primary incubation was 1 hour.
Detected by chemiluminescence.



EB11365 (5 μ g/ml) staining of paraffin embedded Human Skeletal Muscle. Steamed antigen retrieval with citrate buffer pH 6, AP-staining.