



## UK Office

### Everest Biotech Ltd

Cherwell Innovation Centre  
77 Heyford Park  
Upper Heyford  
Oxfordshire  
OX25 5HD  
UK

Enquiries:

[info@everestbiotech.com](mailto:info@everestbiotech.com)

Sales:

[sales@everestbiotech.com](mailto:sales@everestbiotech.com)

Tech support:

[support@everestbiotech.com](mailto:support@everestbiotech.com)

Tel: +44 (0)1869 238326

Fax: +44 (0)1869 238327

## US Office

### Everest Biotech c/o Abcore

405 Maple Street, Suite A106  
Ramona,  
CA 92065  
USA

Inquiries:

[info@everestbiotech.com](mailto:info@everestbiotech.com)

Sales:

[usasales@everestbiotech.com](mailto:usasales@everestbiotech.com)

Tech support:

[support@everestbiotech.com](mailto:support@everestbiotech.com)

Tel: 888-320-4628 (toll-free)

Fax: 888-841-9041

[www.everestbiotech.com](http://www.everestbiotech.com)

**Research Use Only. Not for  
diagnostic or therapeutic use.**

## EB05845 - Goat Anti-PI31 / PSMF1 (Isoform 1) Antibody

Size: 100µg specific antibody in 200µl



### Target Protein

**Principal Names:** PSMF1, PI31, proteasome (prosome, macropain) inhibitor subunit 1 (PI31), RP4-545L17.1, proteasome inhibitor hP131 subunit, proteasome inhibitor subunit 1

**Official Symbol:** PSMF1

**Accession Number(s):** NP\_006805.2

**Human GeneID(s):** [9491](#)

**Non-Human GeneID(s):** 228769 (mouse)

**Important Comments:** This antibody is expected to recognize isoform 1 (NP\_006805.2 and NP\_848693.2).

### Immunogen

Peptide with sequence C-DHLPPPGYDDMYL, from the C Terminus of the protein sequence according to NP\_006805.2.

Please note the [peptide](#) is available for sale.

### Purification and Storage

Purified from goat serum by ammonium sulphate precipitation followed by antigen affinity chromatography using the immunizing peptide.

Supplied at 0.5 mg/ml in Tris saline, 0.02% sodium azide, pH7.3 with 0.5% bovine serum albumin.

Aliquot and store at -20°C. Minimize freezing and thawing.

### Applications Tested

**Peptide ELISA:** antibody detection limit dilution 1:32000.

**Western blot:** Approx 30kDa band observed in lysates of cell line HEK293, approx 30-32kDa in lysates of cell lines K562, NIH3T3, Neuro2a and KNRK, and approx. 35kDa in lysates of cell line LNCaP (calculated MW of 29.8kDa according to Human NP\_006805.2 and Rat NP\_001094475.1, and 28.7kDa according to Mouse NP\_997611.1). Recommended concentration: 0.3-1µg/ml Primary incubation 1 hour at room temperature.

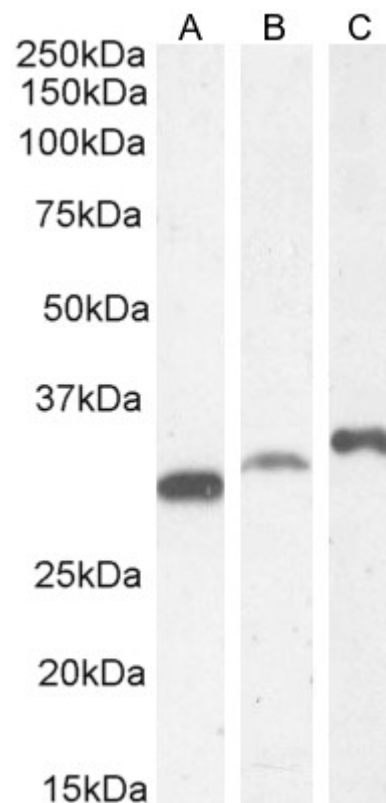
**Immunofluorescence:** Strong expression of the protein seen in the endoplasmic reticulum and cytoplasm of A431 cells. Recommended concentration: 10µg/ml.

**Flow Cytometry:** A customer reported weak staining of A431 cells at 10ug/ml.

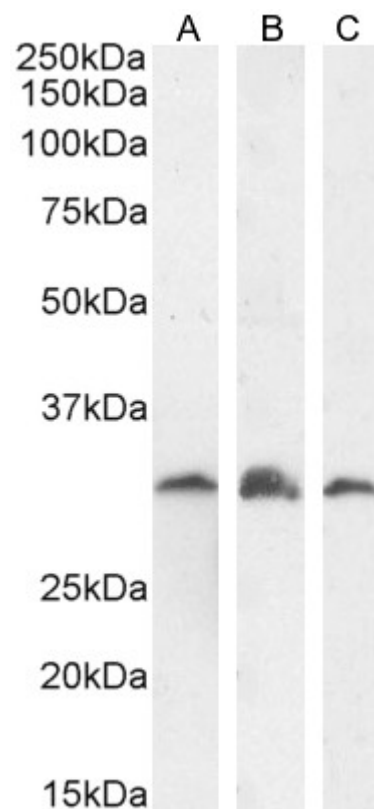
### Species Reactivity

**Tested:** Human, Mouse, Rat

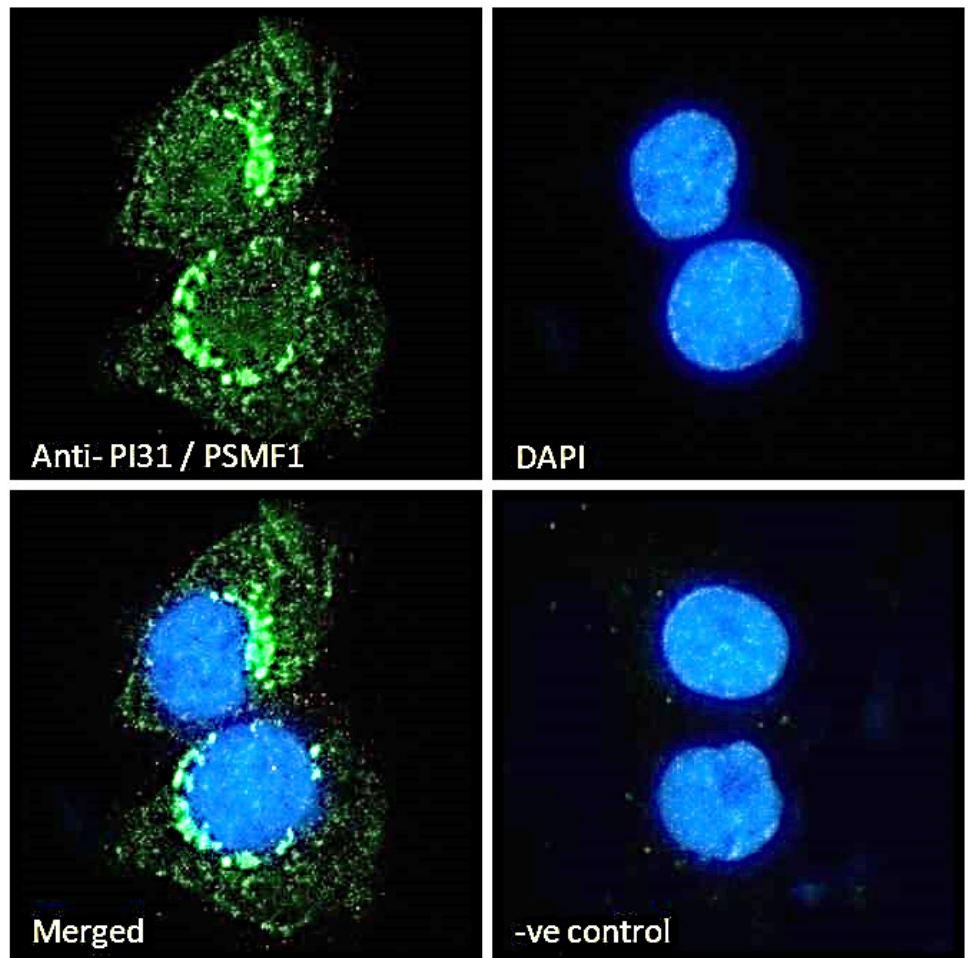
**Expected from sequence similarity:** Human, Mouse, Rat, Dog, Cow



EB05845 (0.3 $\mu$ g/ml) staining of HEK293 (A), K562 (B) and (1 $\mu$ g/ml) LNCaP (C) cell lysate (35 $\mu$ g protein in RIPA buffer). Detected by chemiluminescence.



EB05845 (1 $\mu$ g/ml) staining of KNRK (A), NIH3T3 (B) and (0.3 $\mu$ g/ml) Neuro2a (C) cell lysate (35 $\mu$ g protein in RIPA buffer). Detected by chemiluminescence.



EB05845 Immunofluorescence analysis of paraformaldehyde fixed A431 cells, permeabilized with 0.15% Triton. Primary incubation 1hr (10ug/ml) followed by Alexa Fluor 488 secondary antibody (2ug/ml), showing endoplasmic reticulum and cytoplasmic staining. The nuclear stain is DAPI (blue). Negative control: Unimmunized goat IgG (10ug/ml) followed by Alexa Fluor 488 secondary antibody (2ug/ml).