



UK Office

Everest Biotech Ltd

Cherwell Innovation Centre
77 Heyford Park
Upper Heyford
Oxfordshire
OX25 5HD
UK

Enquiries:

info@everestbiotech.com

Sales:

sales@everestbiotech.com

Tech support:

support@everestbiotech.com

Tel: +44 (0)1869 238326

Fax: +44 (0)1869 238327

US Office

Everest Biotech c/o Abcore

405 Maple Street, Suite A106
Ramona,
CA 92065
USA

Inquiries:

info@everestbiotech.com

Sales:

usasales@everestbiotech.com

Tech support:

support@everestbiotech.com

Tel: 888-320-4628 (toll-free)

Fax: 888-841-9041

www.everestbiotech.com

**Research Use Only. Not for
diagnostic or therapeutic use.**

EB07467-T - Goat Anti-PICK1 Antibody - Trial

Size: 20µg specific antibody in 40µl



Target Protein

Principal Names: PICK1, protein interacting with PRKCA 1, MGC15204, PRKCABP, OTTHUMP00000028509, PRKCA-binding protein, protein interacting with C kinase 1, protein kinase C, alpha binding protein

Official Symbol: PICK1

Accession Number(s): NP_036539.1

Human GeneID(s): [9463](#)

Non-Human GeneID(s): 18693 (mouse), 84591 (rat)

Important Comments: Reported variants represent identical protein (NP_036539.1; NP_001034672.1; NP_001034673.1).

Immunogen

Peptide with sequence C-HYNKLQADPKQ, from the internal region of the protein sequence according to NP_036539.1.

Please note the [peptide](#) is available for sale.

Purification and Storage

Purified from goat serum by ammonium sulphate precipitation followed by antigen affinity chromatography using the immunizing peptide.

Supplied at 0.5 mg/ml in Tris saline, 0.02% sodium azide, pH7.3 with 0.5% bovine serum albumin.

Aliquot and store at -20°C. Minimize freezing and thawing.

Applications Tested

Peptide ELISA: antibody detection limit dilution 1:16000.

Western blot: Approx 50kDa band observed in Mouse Brain lysates (calculated MW of 46.6kDa according to NP_036539.1, NP_001034672.1 and NP_001034673.1).

Recommended concentration: 1-3µg/ml. Primary incubation was 1 hour.

IHC: Paraffin embedded Human Colon and Prostate. Recommended concentration: 5µg/ml.

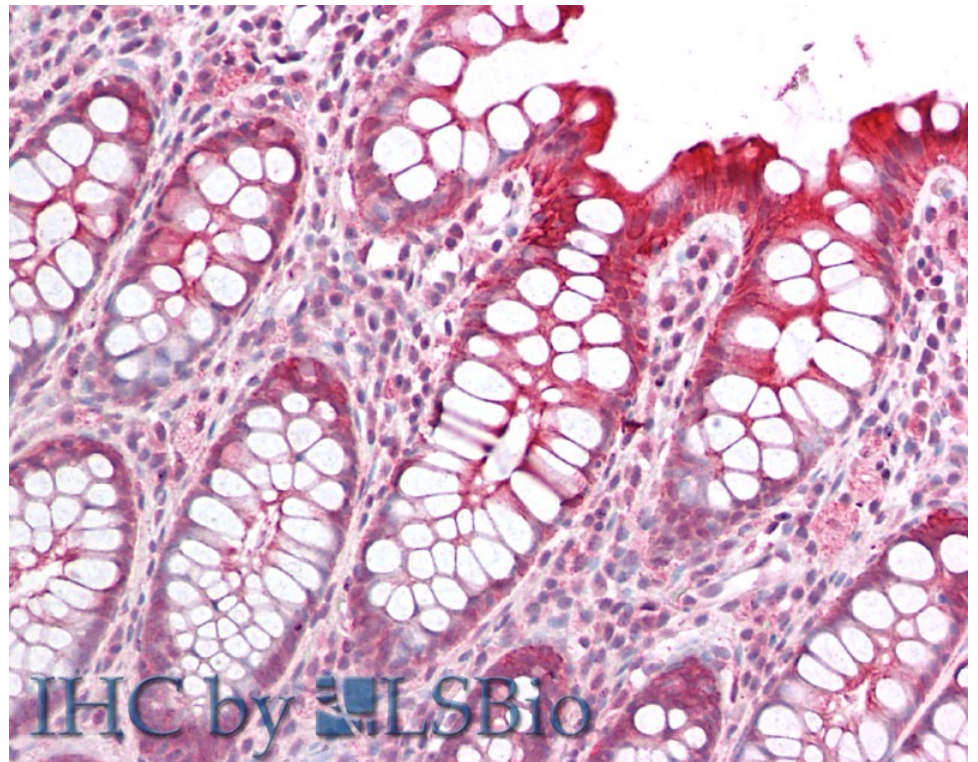
Species Reactivity

Tested: Human, Mouse

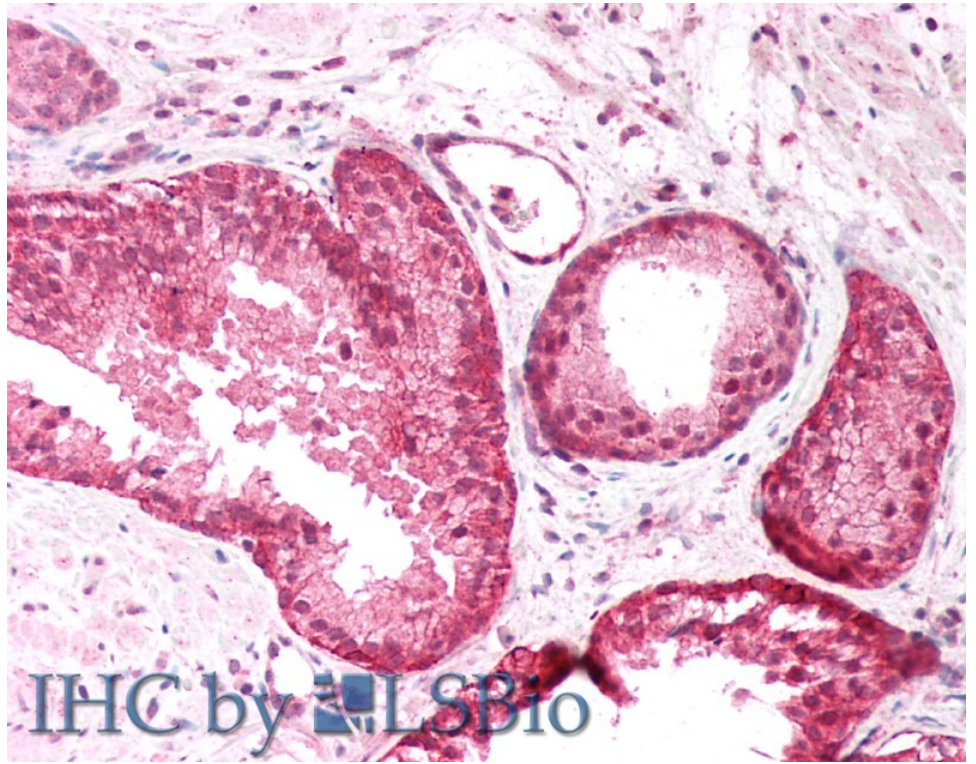
Expected from sequence similarity: Human, Mouse, Rat, Dog, Pig, Cow



EB07467 (1 μ g/ml) staining of Mouse Brain lysate (35 μ g protein in RIPA buffer). Detected by chemiluminescence.



EB07467 (5 μ g/ml) staining of paraffin embedded Human Colon. Steamed antigen retrieval with citrate buffer pH 6, AP-staining.



EB07467 (5µg/ml) staining of paraffin embedded Human Prostate. Steamed antigen retrieval with citrate buffer pH 6, AP-staining.