



UK Office

Everest Biotech Ltd

Cherwell Innovation Centre
77 Heyford Park
Upper Heyford
Oxfordshire
OX25 5HD
UK

Enquiries:

info@everestbiotech.com

Sales:

sales@everestbiotech.com

Tech support:

support@everestbiotech.com

Tel: +44 (0)1869 238326

Fax: +44 (0)1869 238327

US Office

Everest Biotech c/o Abcore

405 Maple Street, Suite A106
Ramona,
CA 92065
USA

Inquiries:

info@everestbiotech.com

Sales:

usasales@everestbiotech.com

Tech support:

support@everestbiotech.com

Tel: 888-320-4628 (toll-free)

Fax: 888-841-9041

www.everestbiotech.com

**Research Use Only. Not for
diagnostic or therapeutic use.**

EB06291 - Goat Anti-PIK3C2A Antibody

Size: 100µg specific antibody in 200µl



Target Protein

Principal Names: PIK3C2A, CPK, PI3-K-C2A, PI3K-C2alpha, PI3-K-C2(ALPHA), phosphoinositide-3-kinase, class 2, alpha polypeptide, C2-containing phosphatidylinositol kinase, DKFZp686L193, MGC142218

Official Symbol: PIK3C2A

Accession Number(s): NP_002636.2

Human GeneID(s): [5286](#)

Non-Human GeneID(s): 18704 (mouse)

Immunogen

Peptide with sequence C-TVKWYQLTAATYL, from the C Terminus of the protein sequence according to NP_002636.2.

Please note the [peptide](#) is available for sale.

Purification and Storage

Purified from goat serum by ammonium sulphate precipitation followed by antigen affinity chromatography using the immunizing peptide.

Supplied at 0.5 mg/ml in Tris saline, 0.02% sodium azide, pH7.3 with 0.5% bovine serum albumin.

Aliquot and store at -20°C. Minimize freezing and thawing.

Applications Tested

Peptide ELISA: antibody detection limit dilution 1:32000.

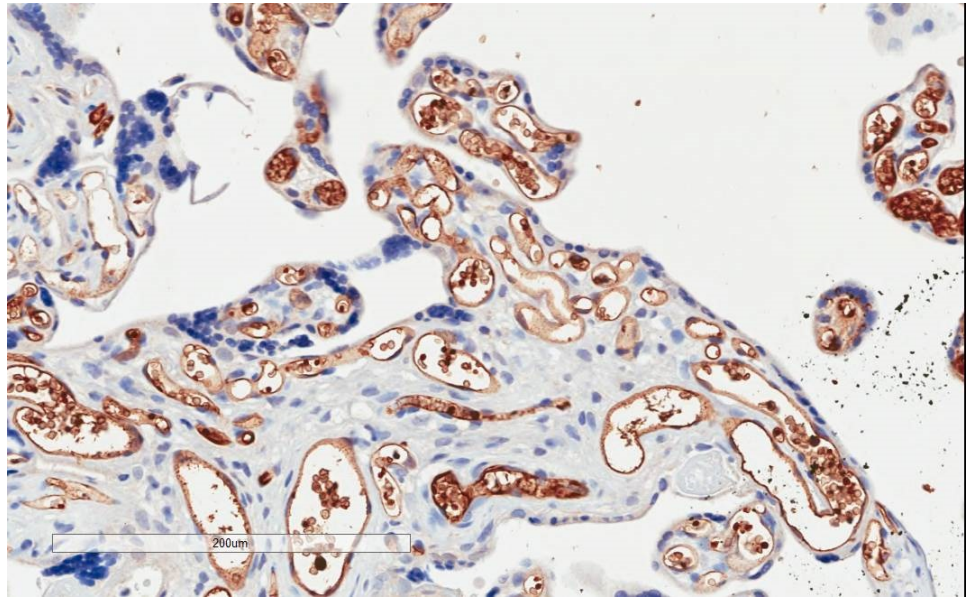
Western blot: Preliminary experiments gave no signal but low background in Human Testis and Molt-4 lysates at up to 1µg/ml.

IHC: In paraffin embedded Human Placenta shows cytoplasm staining of cytotrophoblasts and mesenchymal cells. Recommended concentration: 2-4µg/ml. Paraffin embedded Human Heart. Recommended concentration: 5µg/ml.

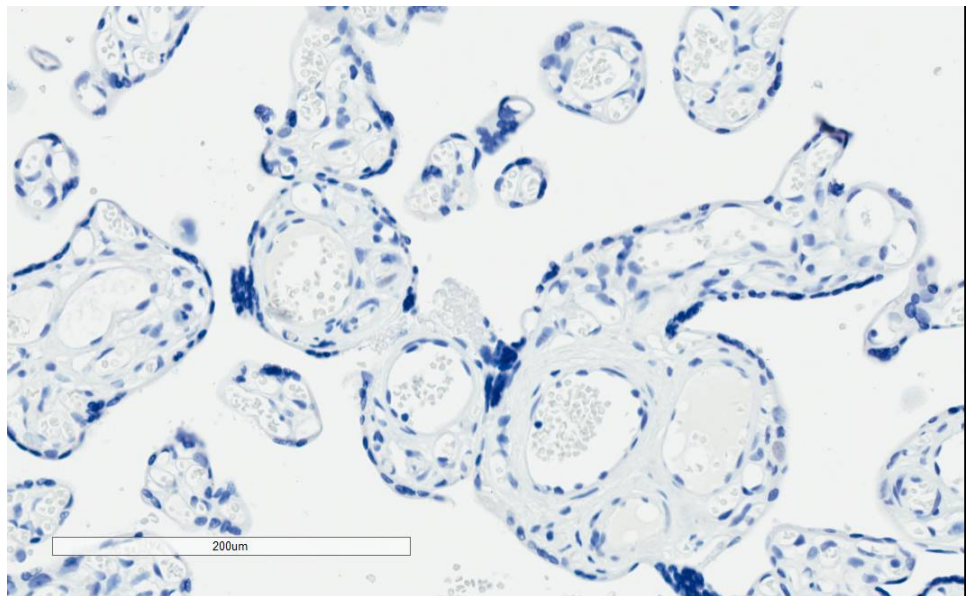
Species Reactivity

Tested: Human

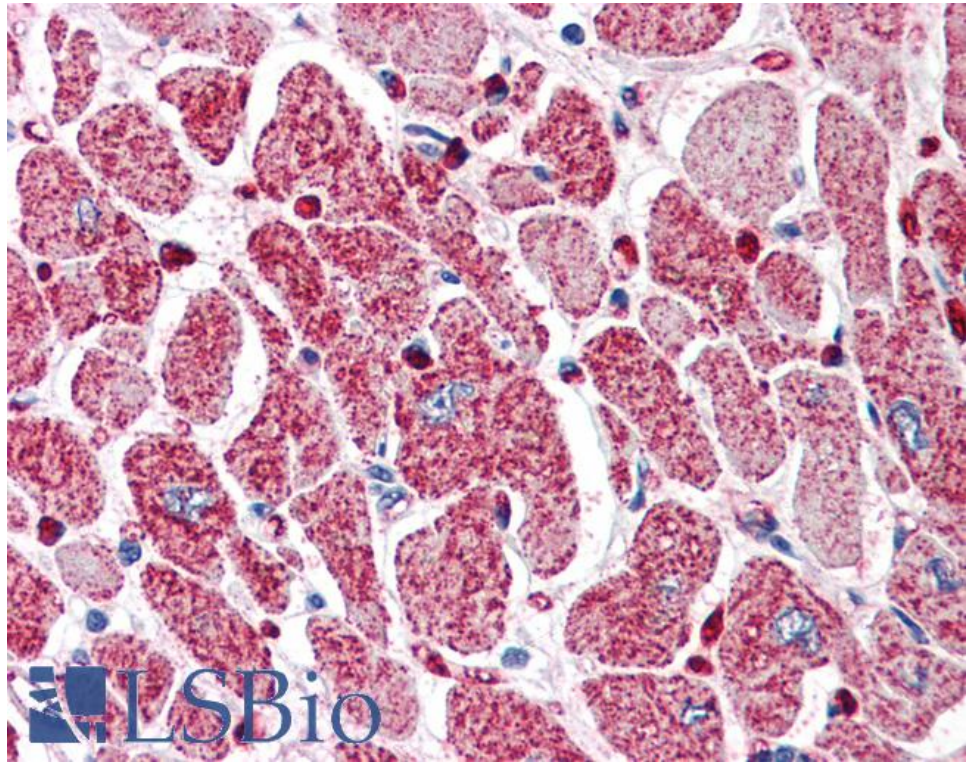
Expected from sequence similarity: Human, Mouse, Dog



EB06291 (2µg/ml) staining of paraffin embedded Human Placenta. Microwaved antigen retrieval with citrate buffer pH 6, HRP-staining.



EB06291 Negative Control showing staining of paraffin embedded Human Placenta, with no primary antibody.



EB06291 (5µg/ml) staining of paraffin embedded Human Heart. Steamed antigen retrieval with citrate buffer pH 6, AP-staining.