



## UK Office

### Everest Biotech Ltd

Cherwell Innovation Centre  
77 Heyford Park  
Upper Heyford  
Oxfordshire  
OX25 5HD  
UK

Enquiries:

[info@everestbiotech.com](mailto:info@everestbiotech.com)

Sales:

[sales@everestbiotech.com](mailto:sales@everestbiotech.com)

Tech support:

[support@everestbiotech.com](mailto:support@everestbiotech.com)

Tel: +44 (0)1869 238326

Fax: +44 (0)1869 238327

## US Office

### Everest Biotech c/o Abcore

405 Maple Street, Suite A106  
Ramona,  
CA 92065  
USA

Inquiries:

[info@everestbiotech.com](mailto:info@everestbiotech.com)

Sales:

[usasales@everestbiotech.com](mailto:usasales@everestbiotech.com)

Tech support:

[support@everestbiotech.com](mailto:support@everestbiotech.com)

Tel: 888-320-4628 (toll-free)

Fax: 888-841-9041

[www.everestbiotech.com](http://www.everestbiotech.com)

**Research Use Only. Not for  
diagnostic or therapeutic use.**

## EB07512 - Goat Anti-PIK3CA / P110alpha Antibody

Size: 100µg specific antibody in 200µl



### Target Protein

**Principal Names:** PIK3CA, p110-alpha, phosphoinositide-3-kinase, catalytic, alpha polypeptide, MGC142161, MGC142163, PI3K, PI3-kinase p110 subunit alpha, PtdIns-3-kinase p110, phosphatidylinositol 3-kinase, catalytic, 110-KD, alpha, phosphatidylinositol 3-kinase, catalytic, alpha polypeptide, phosphatidylinositol-4,5-bisphosphate 3-kinase catalytic subunit, alpha isoform

**Official Symbol:** PIK3CA

**Accession Number(s):** NP\_006209.2

**Human GeneID(s):** [5290](#)

**Non-Human GeneID(s):** 18706 (mouse), 170911 (rat)

### Immunogen

Peptide with sequence C-HQWLKDKNKGEIYD, from the internal region of the protein sequence according to NP\_006209.2.

Please note the [peptide](#) is available for sale.

### Purification and Storage

Purified from goat serum by ammonium sulphate precipitation followed by antigen affinity chromatography using the immunizing peptide.

Supplied at 0.5 mg/ml in Tris saline, 0.02% sodium azide, pH7.3 with 0.5% bovine serum albumin.

Aliquot and store at -20°C. Minimize freezing and thawing.

### Applications Tested

**Peptide ELISA:** antibody detection limit dilution 1:128000.

**Western blot:** Preliminary experiments in lysates of cell lines A431, HeLa and Jurkat gave no specific signal but low background (at antibody concentration up to 1µg/ml).

**IHC:** In paraffin embedded Human Brain (Cerebral Cortex) shows cytoplasm stained in the cell bodies. Recommended concentration: 2-3µg/ml. Paraffin embedded Human Heart. Recommended concentration: 5µg/ml. This antibody has been successfully used in IHC on Human in the following paper: Abubaker J et al. (2009) PMID: 19638206.

### Species Reactivity

**Tested:** Human

**Expected from sequence similarity:** Human, Mouse, Rat, Dog, Cow

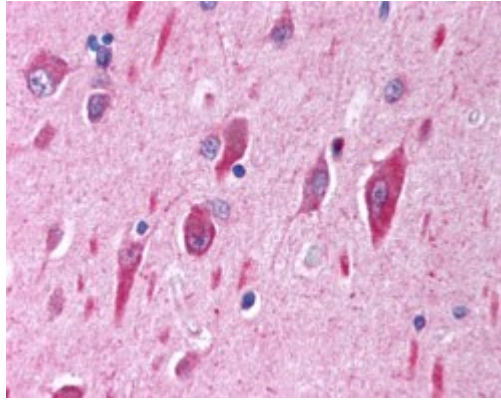
### Specific Reference

**This antibody has been successfully used in IHC on Human:**

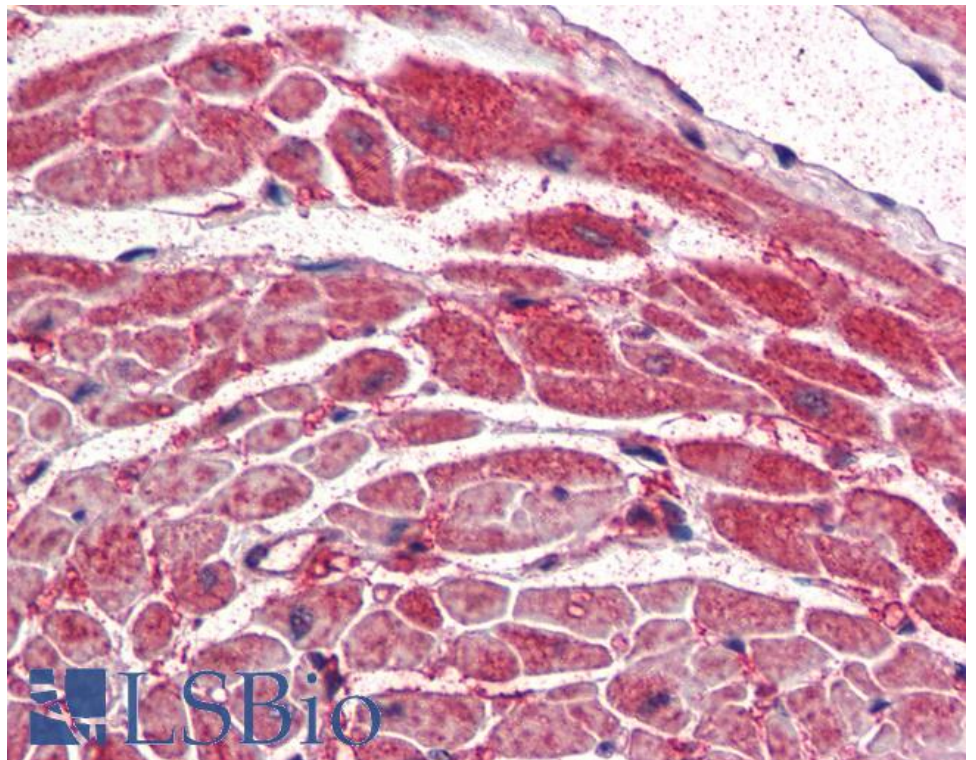
Abubaker J, Bavi P, Al-Haqawi W, Jehan Z, Munkarah A, Uddin S, Al-Kuraya KS. PIK3CA alterations in Middle Eastern ovarian cancers.

Mol Cancer. 2009 Jul 28;8:51.

PMID: 19638206



EB07512 (2.5µg/ml) staining of paraffin embedded Human Brain (Cerebellar Cortex). Steamed antigen retrieval with citrate buffer pH 6, AP-staining.



EB07512 (5µg/ml) staining of paraffin embedded Human Heart. Steamed antigen retrieval with citrate buffer pH 6, AP-staining.