



UK Office

Everest Biotech Ltd

Cherwell Innovation Centre
77 Heyford Park
Upper Heyford
Oxfordshire
OX25 5HD
UK

Enquiries:

info@everestbiotech.com

Sales:

sales@everestbiotech.com

Tech support:

support@everestbiotech.com

Tel: +44 (0)1869 238326

www.everestbiotech.com

**Research Use Only. Not for
diagnostic or therapeutic use.**

EB07468 - Goat Anti-PIN1 Antibody

Size: 100µg specific antibody in 200µl



Target Protein

Principal Names: PIN1, protein (peptidylprolyl cis/trans isomerase) NIMA-interacting 1, DOD, UBL5, peptidyl-prolyl cis/trans isomerase, NIMA-interacting, prolyl isomerase, protein (peptidyl-prolyl cis/trans isomerase) NIMA-interacting 1

Official Symbol: PIN1

Accession Number(s): NP_006212.1

Human GeneID(s): [5300](#)

Non-Human GeneID(s): 23988 (mouse), 298696 (rat)

Immunogen

Peptide with sequence C-KHSQSRRPSSWRQEKITR, from the internal region of the protein sequence according to NP_006212.1.

Please note the [peptide](#) is available for sale.

Purification and Storage

Purified from goat serum by ammonium sulphate precipitation followed by antigen affinity chromatography using the immunizing peptide.

Supplied at 0.5 mg/ml in Tris saline, 0.02% sodium azide, pH7.3 with 0.5% bovine serum albumin.

Aliquot and store at -20°C. Minimize freezing and thawing.

Applications Tested

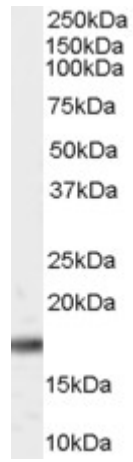
Peptide ELISA: antibody detection limit dilution 1:128000.

Western blot: Approx 17kDa band observed in Rat Brain lysates (calculated MW of 18.2kDa according to Human NP_006212.1 and 18.2kDa according to Mouse NP_075860). Recommended concentration: 0.2-0.6µg/ml. Preliminary testing was unsuccessful on Mouse Brain for this particular batch.

Species Reactivity

Tested: Rat

Expected from sequence similarity: Human, Mouse, Rat, Dog



EB07468 (0.2 μ g/ml) staining of Rat Brain lysate (35 μ g protein in RIPA buffer). Primary incubation was 1 hour.
Detected by chemiluminescence.