



UK Office

Everest Biotech Ltd

Cherwell Innovation Centre
77 Heyford Park
Upper Heyford
Oxfordshire
OX25 5HD
UK

Enquiries:

info@everestbiotech.com

Sales:

sales@everestbiotech.com

Tech support:

support@everestbiotech.com

Tel: +44 (0)1869 238326

www.everestbiotech.com

**Research Use Only. Not for
diagnostic or therapeutic use.**

EB08284 - Goat Anti-PITX3 Antibody

Size: 100µg specific antibody in 200µl



Target Protein

Principal Names: PITX3, paired-like homeodomain 3, MGC12766, PTX3, homeobox protein PITX3

Official Symbol: PITX3

Accession Number(s): NP_005020.1

Human GeneID(s): [5309](#)

Important Comments: This antibody is not expected to cross-react with PITX1 and PITX2.

Immunogen

Peptide with sequence PEHGCKGQEHSD, from the internal region of the protein sequence according to NP_005020.1.

Please note the [peptide](#) is available for sale.

Purification and Storage

Purified from goat serum by ammonium sulphate precipitation followed by antigen affinity chromatography using the immunizing peptide.

Supplied at 0.5 mg/ml in Tris saline, 0.02% sodium azide, pH7.3 with 0.5% bovine serum albumin.

Aliquot and store at -20°C. Minimize freezing and thawing.

Applications Tested

Peptide ELISA: antibody detection limit dilution 1:1000.

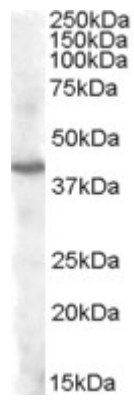
Western blot: Approx 40kDa band observed in Human Brain (Cerebellum and Cerebral Cortex) lysates (calculated MW of 31.8kDa according to NP_005020.1). The observed molecular weight corresponds to earlier findings in literature with different antibodies (Coulon et al, J Biol Chem. 2007 Nov 9;282(45):33192-200.; PMID: 17848564).

Recommended concentration: 0.3-1µg/ml.

Species Reactivity

Tested: Human

Expected from sequence similarity: Human



EB08284 (1µg/ml) staining of Human Cerebellum lysate (35µg protein in RIPA buffer). Primary incubation was 1 hour. Detected by chemiluminescence.