



## UK Office

### Everest Biotech Ltd

Cherwell Innovation Centre  
77 Heyford Park  
Upper Heyford  
Oxfordshire  
OX25 5HD  
UK

Enquiries:

[info@everestbiotech.com](mailto:info@everestbiotech.com)

Sales:

[sales@everestbiotech.com](mailto:sales@everestbiotech.com)

Tech support:

[support@everestbiotech.com](mailto:support@everestbiotech.com)

Tel: +44 (0)1869 238326

Fax: +44 (0)1869 238327

## US Office

### Everest Biotech c/o Abcore

405 Maple Street, Suite A106  
Ramona,  
CA 92065  
USA

Inquiries:

[info@everestbiotech.com](mailto:info@everestbiotech.com)

Sales:

[usasales@everestbiotech.com](mailto:usasales@everestbiotech.com)

Tech support:

[support@everestbiotech.com](mailto:support@everestbiotech.com)

Tel: 888-320-4628 (toll-free)

Fax: 888-841-9041

[www.everestbiotech.com](http://www.everestbiotech.com)

**Research Use Only. Not for  
diagnostic or therapeutic use.**

## EB08032 - Goat Anti-PLA2G1B Antibody

Size: 100µg specific antibody in 200µl



### Target Protein

**Principal Names:** PLA2G1B, phospholipase A2, group IB (pancreas), MGC119834, MGC119835, PLA2, PLA2A, PPLA2, phospholipase A2, group IB

**Official Symbol:** PLA2G1B

**Accession Number(s):** NP\_000919.1

**Human GeneID(s):** [5319](#)

**Non-Human GeneID(s):** 18778 (mouse), 29526 (rat)

### Immunogen

Peptide with sequence NKAHKNLDTKKYCQS, from the C Terminus of the protein sequence according to NP\_000919.1.

Please note the [peptide](#) is available for sale.

### Purification and Storage

Purified from goat serum by ammonium sulphate precipitation followed by antigen affinity chromatography using the immunizing peptide.

Supplied at 0.5 mg/ml in Tris saline, 0.02% sodium azide, pH7.3 with 0.5% bovine serum albumin.

Aliquot and store at -20°C. Minimize freezing and thawing.

### Applications Tested

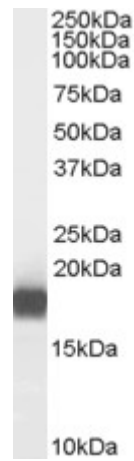
**Peptide ELISA:** antibody detection limit dilution 1:64000.

**Western blot:** Approx. 17-18kDa band observed in Human Pancreas lysates (calculated MW of 16.4kDa according to NP\_000919.1). In transfected HEK293 transiently expressing PLA2G1B a band of approx. 18kDa is observed. This band is not observed in the non-transfected HEK293. Recommended concentration: 0.01µg/ml.

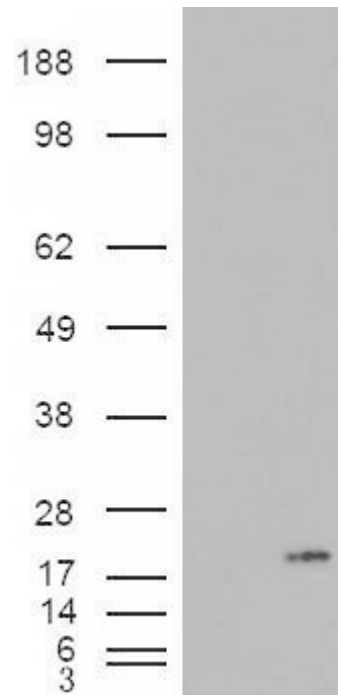
### Species Reactivity

**Tested:** Human

**Expected from sequence similarity:** Human, Dog



EB08032 (0.01 $\mu$ g/ml) staining of Human Pancreas lysate (35 $\mu$ g protein in RIPA buffer). Primary incubation was 1 hour. Detected by chemiluminescence.



HEK293 overexpressing PLA2G1B (RC216089) and probed with EB08032 (mock transfection in first lane), tested by Origene.