



## International Office

### Everest Biotech Ltd

Vector Laboratories, Inc.  
6737 Mowry Ave  
Newark, CA 94560  
United States

Customer Service:

[customerservice@vectorlabs.com](mailto:customerservice@vectorlabs.com)

Technical Service:

[technical@vectorlabs.com](mailto:technical@vectorlabs.com)

Tel: +1 (800) 227-6666

[www.everestbiotech.com](http://www.everestbiotech.com)

**Research Use Only. Not for  
diagnostic or therapeutic use.**

## EB10114 - Goat Anti-PLA2G4C Antibody

Size: 100µg specific antibody in 200µl



### Target Protein

**Principal Names:** CPLA2-gamma, cytosolic phospholipase A2 gamma, DKFZp586C0423, FLJ42247, FLJ44164, phospholipase A2, cytosolic, calcium-independent, gamma, phospholipase A2, group IVC, phospholipase A2, group IVC (cytosolic, calcium-independent), PLA2G4C

**Official Symbol:** PLA2G4C

**Accession Number(s):** NP\_003697.2; NP\_001152794.1; NP\_001152795.1

**Human GeneID(s):** [8605](#)

**Important Comments:** This antibody is expected to recognize all reported isoforms (NP\_003697.2; NP\_001152794.1; NP\_001152795.1).

### Immunogen

Peptide with sequence C-NTEVIREYIFDQLR, from the internal region of the protein sequence according to NP\_003697.2; NP\_001152794.1; NP\_001152795.1.

Please note the [peptide](#) is available for sale.

### Purification and Storage

Purified from goat serum by ammonium sulphate precipitation followed by antigen affinity chromatography using the immunizing peptide.

Supplied at 0.5 mg/ml in Tris saline, 0.02% sodium azide, pH7.3 with 0.5% bovine serum albumin.

Aliquot and store at -20°C. Minimize freezing and thawing.

### Applications Tested

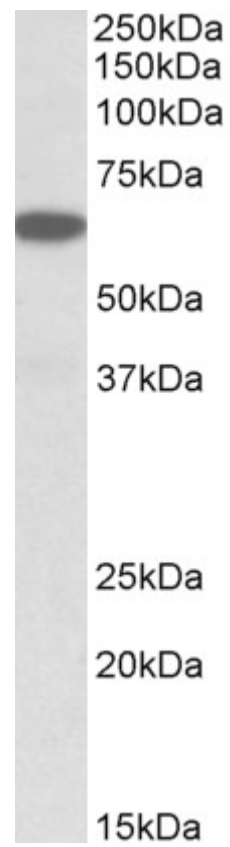
**Peptide ELISA:** antibody detection limit dilution 1:128000.

**Western blot:** Approx 65kDa band observed in Human Brain (Hippocampus), Liver, Pancreas, and Spleen lysates (calculated MW of 62.5kDa according to NP\_001152794.1). Recommended concentration: 0.03-0.1µg/ml.

### Species Reactivity

**Tested:** Human

**Expected from sequence similarity:** Human



EB10114 (0.03µg/ml) staining of Human Pancreas lysate (35µg protein in RIPA buffer). Primary incubation was 1 hour. Detected by chemiluminescence.