



UK Office

Everest Biotech Ltd

Cherwell Innovation Centre
77 Heyford Park
Upper Heyford
Oxfordshire
OX25 5HD
UK

Enquiries:

info@everestbiotech.com

Sales:

sales@everestbiotech.com

Tech support:

support@everestbiotech.com

Tel: +44 (0)1869 238326

Fax: +44 (0)1869 238327

US Office

Everest Biotech c/o Abcore

405 Maple Street, Suite A106
Ramona,
CA 92065
USA

Inquiries:

info@everestbiotech.com

Sales:

usasales@everestbiotech.com

Tech support:

support@everestbiotech.com

Tel: 888-320-4628 (toll-free)

Fax: 888-841-9041

www.everestbiotech.com

**Research Use Only. Not for
diagnostic or therapeutic use.**

EB06922 - Goat Anti-Plasminogen Activator / PLAU Antibody

Size: 100µg specific antibody in 200µl



Target Protein

Principal Names: PLAU, plasminogen activator, urokinase, HGNC:9052, ATF, UPA, URK, u-PA, U-plasminogen activator, antagonist of uPA, plasminogen activator, urinary, urokinase plasminogen activator, urokinase-type plasminogen activator amino-terminal fragment, urokinase-type plasminogen activator precursor, urokinase-type plasminogen activator

Official Symbol: PLAU

Accession Number(s): NP_002649.1; NP_001138503.1

Human GeneID(s): [5328](#)

Important Comments: This antibody is expected to recognise both reported isoforms.

Immunogen

Peptide with sequence C-HFLPWIRSHTKEEN, from the C Terminus of the protein sequence according to NP_002649.1; NP_001138503.1.

Please note the [peptide](#) is available for sale.

Purification and Storage

Purified from goat serum by ammonium sulphate precipitation followed by antigen affinity chromatography using the immunizing peptide.

Supplied at 0.5 mg/ml in Tris saline, 0.02% sodium azide, pH7.3 with 0.5% bovine serum albumin.

Aliquot and store at -20°C. Minimize freezing and thawing.

Applications Tested

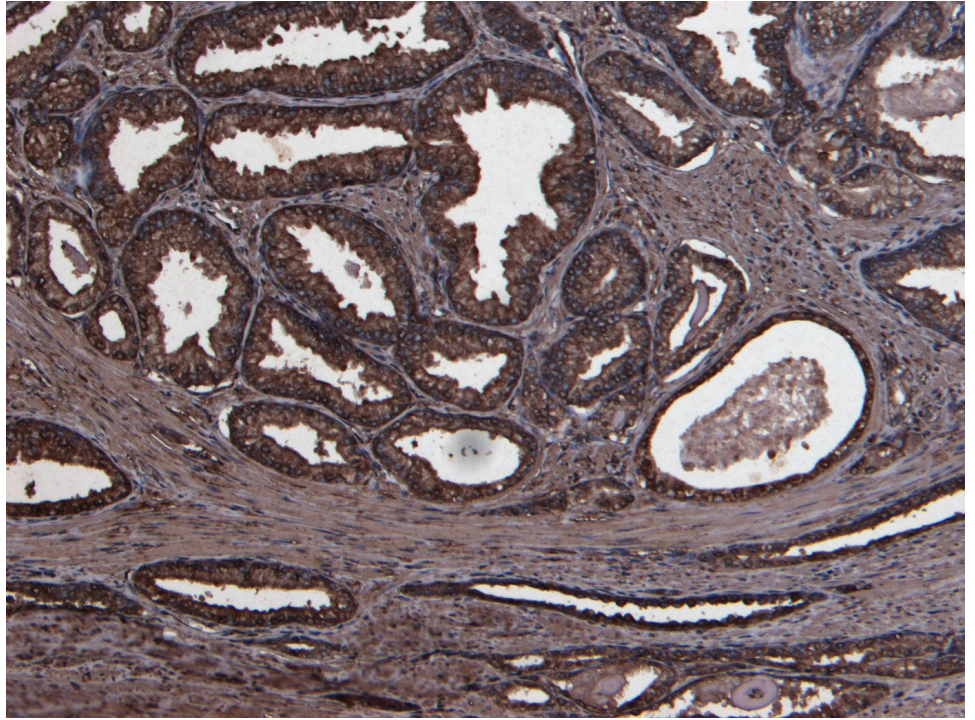
Peptide ELISA: antibody detection limit dilution 1:16000.

IHC: Paraffin embedded Human Prostate and Placenta. Recommended concentration: 8µg/ml.

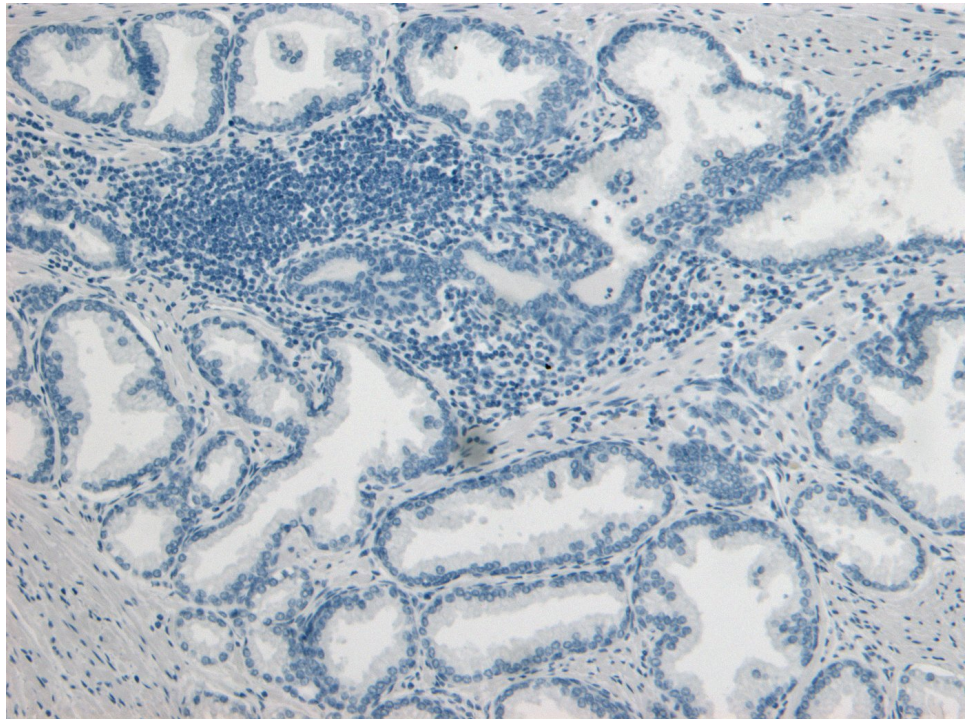
Species Reactivity

Tested: Human

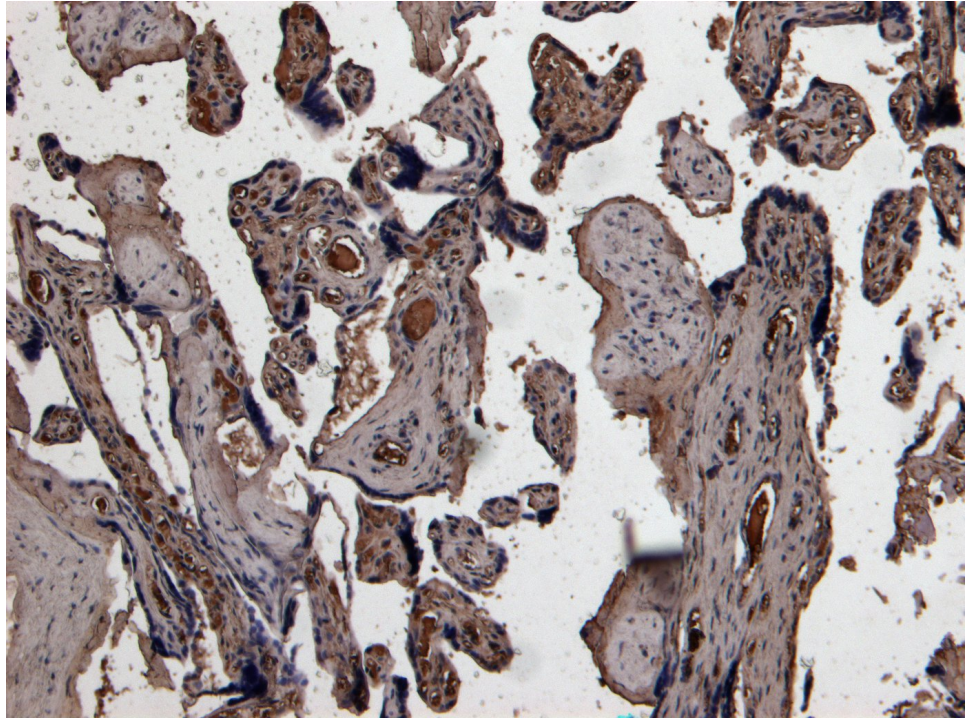
Expected from sequence similarity: Human



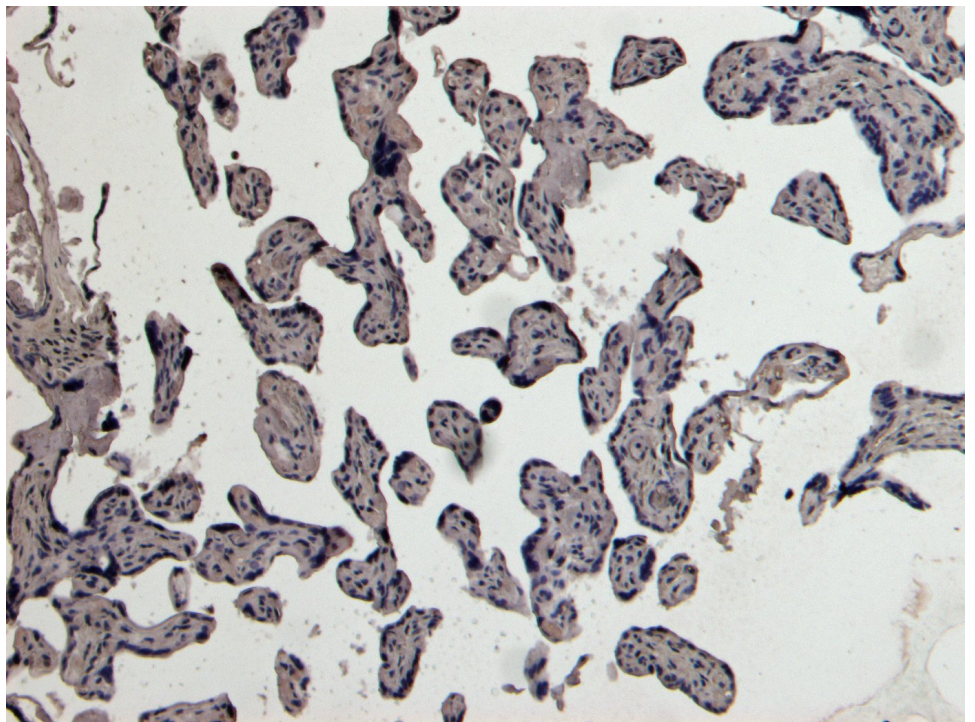
EB06922 (8µg/ml) staining of paraffin embedded Human Prostate. Heat induced antigen retrieval with citrate buffer pH 6, HRP-staining.



EB06922 Negative Control showing staining of paraffin embedded Human Prostate, with no primary antibody.



EB06922 (8µg/ml) staining of paraffin embedded Human Placenta. Heat induced antigen retrieval with citrate buffer Ph 6, HRP-staining.



EB06922 Negative Control showing staining of paraffin embedded Human Placenta, with no primary antibody.