

## UK Office

### Everest Biotech Ltd

Cherwell Innovation Centre  
77 Heyford Park  
Upper Heyford  
Oxfordshire  
OX25 5HD  
UK

Enquiries:

[info@everestbiotech.com](mailto:info@everestbiotech.com)

Sales:

[sales@everestbiotech.com](mailto:sales@everestbiotech.com)

Tech support:

[support@everestbiotech.com](mailto:support@everestbiotech.com)

Tel: +44 (0)1869 238326

[www.everestbiotech.com](http://www.everestbiotech.com)

**Research Use Only. Not for  
diagnostic or therapeutic use.**

## EB11524 - Goat Anti-PLK1 (aa287-298) Antibody

Size: 100µg specific antibody in 200µl



### Target Protein

**Principal Names:** cell cycle regulated protein kinase, OTTHUMP00000122462, PLK, PLK1, PLK-1, polo (Drosophila)-like kinase, polo like kinase, polo-like kinase 1, serine/threonine-protein kinase 13, serine/threonine-protein kinase PLK1, STPK13

**Official Symbol:** PLK1

**Accession Number(s):** NP\_005021.2

**Human GeneID(s):** [5347](#)

### Immunogen

Peptide with sequence C-QTDPTARPTINE, from the internal region of the protein sequence according to NP\_005021.2.

Please note the [peptide](#) is available for sale.

### Purification and Storage

Purified from goat serum by ammonium sulphate precipitation followed by antigen affinity chromatography using the immunizing peptide.

Supplied at 0.5 mg/ml in Tris saline, 0.02% sodium azide, pH7.3 with 0.5% bovine serum albumin.

Aliquot and store at -20°C. Minimize freezing and thawing.

### Applications Tested

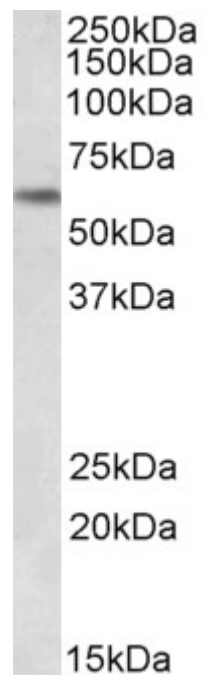
**Peptide ELISA:** antibody detection limit dilution 1:16000.

**Western blot:** Approx 60kDa band observed in nuclear lysates of cell line HeLa (calculated MW of 68.3kDa according to NP\_005021.2). Recommended concentration: 0.3-1µg/ml.

### Species Reactivity

**Tested:** Human

**Expected from sequence similarity:** Human, Mouse, Rat, Dog, Pig, Cow



EB11524 (0.3 $\mu$ g/ml) staining of HeLa nuclear lysate (35 $\mu$ g protein in RIPA buffer). Primary incubation was 1 hour. Detected by chemiluminescence.