



UK Office

Everest Biotech Ltd

Cherwell Innovation Centre
77 Heyford Park
Upper Heyford
Oxfordshire
OX25 5HD
UK

Enquiries:

info@everestbiotech.com

Sales:

sales@everestbiotech.com

Tech support:

support@everestbiotech.com

Tel: +44 (0)1869 238326

www.everestbiotech.com

**Research Use Only. Not for
diagnostic or therapeutic use.**

EB06969 - Goat Anti-PLK1 Antibody

Size: 100µg specific antibody in 200µl



Target Protein

Principal Names: PLK1, polo-like kinase 1 (Drosophila), HGNC:9077, PLK, STPK13, cell cycle regulated protein kinase polo (Drosophila)-like kinase, polo like kinase, polo-like kinase, polo-like kinase (Drosophila)

Official Symbol: PLK1

Accession Number(s): NP_005021.2

Human GeneID(s): [5347](#)

Non-Human GeneID(s): 18817 (mouse), 25515 (rat)

Immunogen

Peptide with sequence C-DKLLSSRSASNRLK, from the C Terminus of the protein sequence according to NP_005021.2.

Please note the [peptide](#) is available for sale.

Purification and Storage

Purified from goat serum by ammonium sulphate precipitation followed by antigen affinity chromatography using the immunizing peptide.

Supplied at 0.5 mg/ml in Tris saline, 0.02% sodium azide, pH7.3 with 0.5% bovine serum albumin.

Aliquot and store at -20°C. Minimize freezing and thawing.

Applications Tested

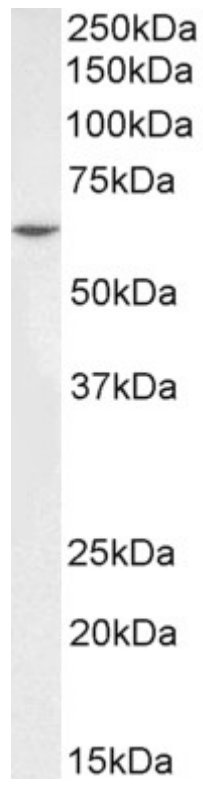
Peptide ELISA: antibody detection limit dilution 1:128000.

Western blot: Approx 65kDa band observed in lysates of cell line K562 (calculated MW of 68.3kDa according to NP_005021.2). Recommended concentration: 1-3µg/ml.

Species Reactivity

Tested: Human

Expected from sequence similarity: Human, Mouse, Rat, Dog



EB06969 (1 μ g/ml) staining of K562 lysate (35 μ g protein in RIPA buffer). Primary incubation was 1 hour.
Detected by chemiluminescence.